

# **IMPACT OF IDOL IMMERSION ON WATER QUALITY OF AQUATIC BODIES -2020**



**STATE POLLUTION CONTROL BOARD, ODISHA  
PARIVESH BHAWAN, A-118, NILAKANTHANAGAR  
UNIT-VIII, BHUBANESWAR-751012**

**Apri, 2021**



## CONTENTS

		Page No.
1.	Introduction	1
2.	Guidelines for idol immersion	1
3.	Actions taken by the State Pollution control Board, Odisha	3
4.	Actions taken by the Puja Committee Organisers Water quality Standard	10
5.	Water Quality Standard	10
6.	Water quality assessment	12
7.	Recommendations	18
8.	Annexures	



### **List of Tables**

- Table-1 Use Based Classification
- Table-2 Primary Water Quality Criteria
- Table-3 Tolerance limits for other parameters
- Table-4 Impact of Idol immersion during Durga Puja on water quality of Kathajodi river at Cuttack
- Table-5 Impact of Idol immersion during Durga Puja on water quality of Kuakhai river at Bhubaneswar
- Table-6 Impact of Idol immersion during Durga Puja on water quality of Daya river at Bhubaneswar
- Table-7 Impact of Idol immersion during Durga Puja on water quality of Mangala River at Puri

### **List of Figures**

- Fig.1 Appeal to Public to observe pollution free Ganesh puja, Durga Puja, Laxmi Puja and Kali Puja through Public Notice on Newspapers
- Fig. 2 Construction of temporary idol immersion pond on the bank of river
- Fig. 3 Lining of temporary idol immersion ponds with synthetic liner
- Fig. 4 Immersion of idols in temporary idol immersion ponds
- Fig 5 Removal of immersed materials using crane from idol immersion ponds.
- Fig 6 Left- overs of immersed materials in idol immersion ponds
- Fig 7 Manual removal of left overs of immersed materials from the idol immersion ponds
- Fig 8 Transport of immersed materials to municipal solid waste disposal site



## 1. Introduction

Idol immersion of deities after culmination of puja is a part of religious practices of Hindu festivals in India. Large size idols are being worshiped by the peoples in Ganesh Puja, Durga Puja, Kali Puja, Biswakarma Puja, Gajalaxmi and are ultimately immersed alongwith the puja offerings in water bodies like rivers, ponds etc. Since these pujas are mostly celebrated in monsoon or post-monsoon seasons, and the flow in rivers are high during this period, immersion of idols and puja offerings in the rivers usually have no significant impact on the water quality. However, with the increase in number and size of idols, use of alternate materials other than clay for making the idols, use of synthetic paints and varnishes rather than natural dyes to decorate the idols in present years and decreased flow in rivers, the probability of contamination of water after immersion of idols in water bodies, has been increased. Besides these, dumping of puja left-overs such as vastras on idols, flowers, decorating materials (made of paper and plastic), etc. in water bodies during this immersion process has also increased the risk of contamination of water bodies. This, in turn, may affect the aquatic ecosystem at the immersion sites as well as its down-streams.

With this background, Central Pollution Control Board (CPCB) has prepared the "Guidelines for Idol Immersion" for implementation during immersion of idols in aquatic bodies to minimize the pollution load.

## 2. Guideline for Idol Immersion

In compliance of the directions of the Hon'ble High Court of Bombay in the matter of PIL W.P. No. 13251325/2003 Janahit Manch Vs the State of Maharashtra and others, the Competent Authority in CPCB has constituted a Committee, vide Order No. A-22011/1/90-Mon dated 10.02.2009, to formulate Guidelines for immersion of idols in natural stream. "Guidelines for Idol Immersion" (PROBES/136/2010) developed by the CPCB encompasses the roles of local bodies/ authorities, Puja Committee Organisers and State Pollution Control Board or Pollution Control committees for implementation of the Guideline to minimize the impact of idol immersion activities on the aquatic bodies.



**(a) General Guidelines for idol immersion**

- Use of traditional clay for making idols should be encouraged.
- Use of water soluble, non-toxic natural dyes should be encouraged to colour the idols rather than painting of idols.
- Worship materials like flowers, decorating materials, should be removed before immersion of idols. All biodegradable matters should be disposed separately for recycling or composting. All non-biodegradable matters should be collected separately for disposal in separate landfills.
- Mass awareness programmes should be conducted to aware the Public on ill effects of idol immersion.
- All idols should be immersed in an identified area on the surface water bodies which is cordoned, barricaded and preferably lined with synthetic liner. After immersion, the liner should be removed to collect the dumped materials for final disposal at appropriate places.

**(b) General Guidelines for Local bodies/ Authorities**

- Local bodies/ Authorities should identify adequate number of idol immersion spots to avoid overcrowding and to reduce pollution load on the water bodies. Such spots should be notified and informed to the Puja Committees through awareness programmes.
- At the immersion of sites, burning of solid wastes so generated during the immersion of idols, should be prohibited.
- Within 48 hours of idol immersion, the left over materials at the immersion sites should be collected by the local bodies for final disposal at appropriate places.
- In case of immersion of idols in rivers and lakes, arrangements may be made for construction of temporary confined ponds with earthen bunds for the purpose of immersion of idols. After the completion of immersion, supernatant water may be allowed to flow as usual after checking for colour and turbidity. Lime may be allowed to the temporary confined pond.
- Mass awareness programmes may be conducted to educate the people on ill effects of toxic idol immersion.



**c) Role of State Pollution Control Boards (SPCBs) and Pollution Control Committees (PCCs)**

- Concerned SPCB/ PCC should conduct water quality monitoring of water bodies at the immersion sites preferably in Class-I cities (having population more than one lac), at three stages i.e. Pre-immersion, during immersion and post-immersion. For ascertaining water quality, 12 numbers of physico-chemical parameters such as pH, DO, BOD, COD, Conductivity, Turbidity, TDS, Total Solids, Chromium, lead, zinc and copper may be analysed and results posted on the SPCB's website.
- SPCB/ PCC shall help to local administration in preparing material for mass awareness for the purpose.

**3. Actions taken by the State Pollution Control Board, Odisha**

Ganesh Puja, Biswakarma Puja and Durga Puja, Kali Puja Gajalaxmi puja are celebrated in massive scale in most of the cities of the State of Odisha. After culmination of puja celebrations, the idols are generally immersed on a single day as decided by the Puja Committee Organisers, at the designated sites of the rivers flowing along the cities. In some places, idols are immersed in ponds, canals and sea in absence of any river nearby. Since last decade, Board has been taking proactive steps to implement the Guidelines for Idol Immersion at all places. Besides these, Board is also conducting the water quality monitoring of four rivers i.e. Kathajodi river along Cuttack city; Kuakhai river and Daya river along Bhubaneswar city ; and Mangala river along Puri city to assess the impact of idol immersion.

In the year 2015, Hon'ble High Court of Orissa have intervened in this matter and vide their order dated 07.10.2015 directed the State Pollution Control Board, Odisha to render necessary assistance to the District Collectors and ensure strict compliances of the Guidelines for Idol Immersion during the Durga Puja and other pujas to follow thereof. In compliance to the order, every year Board is making an intensive as well as proactive approach to ensure the implementation of the Guidelines in all the urban local bodies of the State. Further, to contain COVID 19 Pandemic situation, the Revenue and Disaster Management Department in Govt. of Odisha had issued a



guideline vide Order No. 5315 dated 10.09.2020 for observance of Durga Puja, Laxmi Puja, Kali Puja and other similar pujas during September-November, wherein it has been instructed that the idols will be immersed in the artificial pond(s) created by the local administration for the purpose (Annexure-1).

Like previous years, to minimize the impact of idol immersion on the water quality, the State Pollution Control Board, Odisha has taken following steps during 2020, as recommended in the Guideline for idol immersion.

- Informed all the District Collectors and authorities of urban local bodies of the State prior to Ganesh Puja and Durga Puja to implement the Guidelines of Immersion in their areas of jurisdiction.
- Created public awareness through Public Notice on safe Idol immersion practices in Local Newspapers and in Board's website and through public address system (Fig.1).

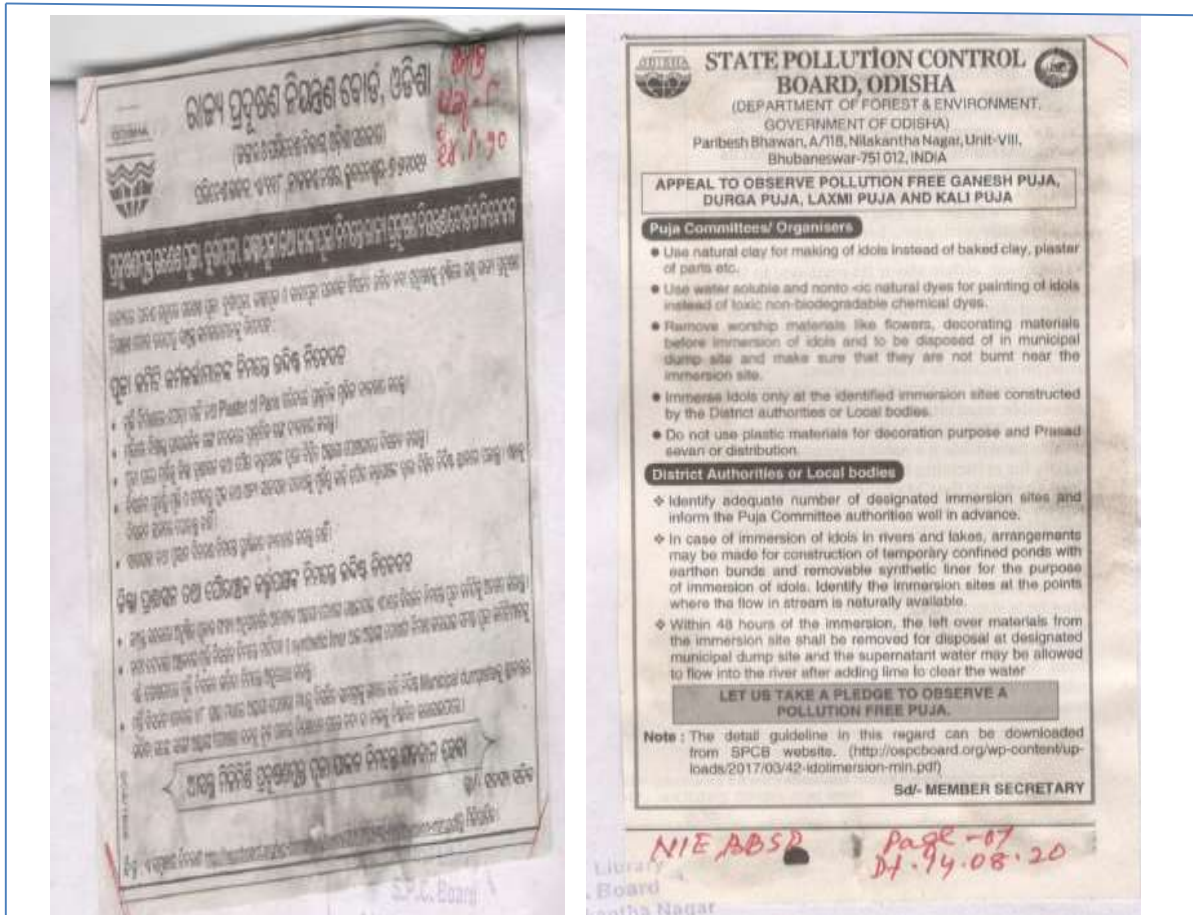


Fig. 1 Appeal to Public to observe pollution free Ganesh puja, Durga Puja, Laxmi Puja and Kali Puja through Public Notice on Newspapers

- Made several meetings with the local bodies/ authorities, Puja Committee Organizers to create awareness on ill impacts of Idol immersion in water bodies.
- Coordinated with the local bodies/ authorities for construction of temporary immersion ponds near rivers as prescribed in the Guideline
- Conducted water quality assessment of the water body in three stages i.e. Pre-immersion. During immersion and post-immersion in Class-I cities such as Bhubaneswar, Cuttack and Puri.

**(a) Actions taken for implementation of the Guideline during immersion of Idols in Rivers**

Generally idols are immersed in flowing waters. In such cases, the Guideline has prescribed to construct temporary ponds having earthen bunds along the river bank for use as idol immersion spots. The ponds are to be lined with removable synthetic liner at its bottom well in advance of the idol immersion. The said liner along with remains of the idols are to be removed within 48 hours of idol immersion. The left over-materials are to be collected by the local bodies for disposal in municipal dumpsites.

In all Urban local bodies of the State, temporary immersion ponds were constructed on the bank of the rivers by the district administrations much before the day of idol immersion. Location of the idol immersion sites and route map were also informed to the Puja committee authorities. The temporary ponds were lined with removable synthetic liner (Fig. 2 and 3).



Fig. 2 Construction of temporary idol immersion pond on the bank of river





Fig.3 Lining of temporary idol immersion ponds with synthetic liner

To avoid crowding, 14 artificial ponds were constructed on the banks of river Mahanadi and Kathajodi river in Cuttack city, two ponds on the bank of Kuakhai river and two ponds on the bank of Daya river in Bhubaneswar city, one pond in Puri city on the bank of Mangala river by the local administration. Similarly at least one pond or more than one ponds were constructed by the District authorities on the banks of rivers in other urban local bodies of the State.

To Contain COVID19 Pandemic situation, Police authorities in the concerned ULBs have issued time slots for immersion of idols in the temporary ponds. Accordingly, a limited number of idols were immersed at a time, After removal of these idols from the ponds, the next lot of idols were immersed. Fig 4 depicts the immersion of idols in temporary ponds.

Within 48 hours of idol immersion, the left-overs were removed by the volunteers from Puja Committees alongwith personnels from municipalities and transported to the designated municipal dumpsites of the respective areas for disposal. Removal of immersion left-overs from the ponds, transportation to designated dumpsites are shown in Figures 5 - 8. The pond water was then treated with lime and allowed to settle prior to ultimate discharge into rivers.



Fig 4 Immersion of idols in temporary idol immersion ponds.





Fig 6 Left overs of immersed materials in idol immersion ponds



Fig 7 Manual removal of left overs of immersed materials from the idol immersion ponds



Fig 8 Transport of immersed materials to municipal solid waste disposal site

Some more photographs of ULB-wise actions taken by the local administrations are given in Annexure-2.

### **(b) Actions taken for implementation of the Guideline during immersion of Idols in Ponds**

In absence of rivers in the cities, idols are immersed in the ponds. In such cases, the Guideline has prescribed to use a corner of the pond as idol immersion spot and is to be lined with removable synthetic liner at its bottom well in advance of the idol immersion. The said liner along with remains of the idols are to be removed within 48 hours of idol immersion. The left over-materials are to be collected by the local bodies for disposal in designated dumpsites.

Temporary immersion ponds were created in some of the urban local by cordoning a corner of the pond or abandoned quarry. The temporary ponds were lined with removable synthetic liner. Within 48 hours of idol immersion, the left-overs were removed and transported to the designated dumpsites of the respective areas for disposal.



#### 4. Actions taken by the Puja Committee Organisers

In the year 2020, action taken by the Puja Committee Organisers in Odisha are as follows.

- The committees also preferred idols made up of clay materials and coloured with natural colours instead chemical colours.
- Immersed idols on the next day of Durga Puja as per the time schedule provided by the Police authorities and at the designated temporary idol immersion ponds. Within 48 hours of the immersion, the idols and the puja left overs in the pond were removed by the volunteers from Puja Committees with the help of Municipal officials.

#### 5. Water Quality Standard

Evaluation of water quality status is carried out basing upon the use of a particular segment of water body, wherein each use has been assigned with tolerance limits for some defined criteria parameters. As per designated best use classification of surface water bodies by CPCB, water quality is usually assessed in respect of five broad categories as described in Table-1.

**Table-1 Use Based Classification**

<b>Class</b>	<b>Use</b>
A	Drinking water source without conventional treatment, but after disinfection.
B	Organised outdoor bathing
C	Drinking water source with conventional treatment followed by disinfection.
D	Fish culture and wild life propagation
E	Irrigation, Industrial cooling or controlled waste disposal

Water quality parameters relevant to the above uses are given in Table-2.

**Table - 2 Primary Water Quality Criteria**

Parameter	Quality Criteria				
	Class- A	Class - B	Class - C	Class - D	Class - E
pH	6.5 – 8.5	6.5 – 8.5	6.5 – 8.5	6.5 – 8.5	6.5 – 8.0
Dissolved Oxygen (DO) (mg/l) minimum	6.0	5.0	4.0	4.0	-
Biochemical oxygen Demand (BOD) (mg/l) Max	2.0	3.0	3.0	-	-
Total Coliform (TC) (MPN/100 ml) Max	50	500	5000	-	-
Free Ammonia-N (mg/l) Max	-	-	-	1.2	-
Electrical Conductivity (EC) (microSiemens/cm) Max	-	-	-	1000	2250
Sodium Absorption Ratio (SAR) Max	-	-	-	-	26
Boron (B) (mg/l) Max	-	-	-	-	2.0

Besides these, IS 2296-1982 prescribes tolerance limits for other parameters as listed in Table-3 for above mentioned designated uses of surface water bodies.

**Table-3 Tolerance limits for other parameters**

Parameter	Tolerance limits (mg/l)				
	Class-A	Class-B	Class-C	Class-D	Class-E
Total Dissolved Solids (TDS), max	500	--	1500	--	2100
Lead (Pb), max	0.10	--	0.10	--	--
Cadmium (Cd), max	0.01	--	0.01	--	--
Chromium (VI) (Cr <sup>6+</sup> ), max	0.05	0.05	0.05	--	--
Iron (Fe), max	0.3	--	50	--	--
Copper (Cu), max	1.5	--	1.5	--	--
Zinc (Zn), max	15	--	15	--	--



## 6. Water Quality Assessment

To assess the impact of idol immersion on water bodies, the Board had conducted water quality assessment studies of Kathajodi river along Cuttack city, Kuakhai and Daya river along Bhubaneswar city and Mangala river along Puri city where comparatively larger number of idols are immersed.

As per the Guidelines, water quality monitoring was conducted in three stages i.e. pre-immersion, during- immersion and post- immersion period of Durga Puja. Idols were immersed in the temporary ponds on 27<sup>th</sup> October, 2020. Therefore, the during-immersion monitoring was conducted on 28<sup>th</sup> October, 2020. The pre-immersion monitoring was conducted in the 2<sup>nd</sup>-4<sup>th</sup> week of October whereas the post-immersion monitoring was conducted in the 1<sup>st</sup> week of November, 2020.

The physico-chemical parameters as recommended by Central Pollution Control Board (CPCB) for such studies, such as pH, Dissolved Oxygen (DO), Biochemical Oxygen Demand (BOD), Chemical Oxygen Demand (COD), Conductivity (EC), Turbidity, Total Dissolved Solids (TDS), Total Solids (TS), and metals (cadmium, chromium, lead, zinc and copper) were analysed in the water samples and compared with the tolerance limits for Class A (Drinking water source without conventional treatment but after disinfection) and Class C (Drinking water source with conventional treatment followed by disinfection) Inland surface water quality. The variation in concentration of different parameters at the immersion sites are compared with the values at the upstream and downstream of immersion sites to assess the impact of idol immersion.

From the water quality data, it has been observed that

- pH of river water during the study period remained well within the tolerance limit of 6.5-8.5.
- Dissolved Oxygen content always remained above 4.0 mg/L which conform to Class C river quality.
- There is no significant change in total solid and total dissolved solid contents in river water quality in Pre-During and Post-phases of monitoring.
- BOD values also remained within the tolerance limit of 3.0 mg/L specified for Class C river. However, the BOD concentration in Kuakhai river at the



downstream station of idol immersion pond in during-immersion period has exceeded the tolerance limit. But this has significantly reduced below the tolerance limit in Post-immersion monitoring.

- Dumping of puja materials and left-overs directly into the rivers, disrupts the oxygen level of water body and therefore increase in BOD and COD values at the downstream of immersion site in during -immersion monitoring were observed. By the time of post-immersion monitoring, the river water rejuvenates itself due to continuous flow of water, which is indicated by lowering of BOD values and other parameters in the rivers.
- Concentrations of cadmium at all locations during the during the period of study remained below detection limit i.e. 0.02 mg/L. However, cadmium concentration in Kathajodi river at the downstream of idol immersion pond in during-immersion period has exceeded the tolerance limit. But this has significantly reduced below the detection limit in post-immersion monitoring.
- Concentrations of lead, copper and hexavalent chromium remained below the respective detection limits such as 0.1 mg/L, 0.03 mg/L and 0.05 mg/L respectively.
- Further, because of the preventive measures taken by the district administration not to allow the water of idol immersion ponds to flow into the river, water quality of downstream stations in during-immersion and Post-immersion periods mostly remained well within the tolerance limits of the designated use.
- From the study, it may be concluded that all the parameters specified for the study remained within the tolerance limit for designated class of the river i.e. Class-C (Drinking water source with conventional treatment followed by disinfection) even after immersion of idols) excepting few cases. Concentration of heavy metals such as cadmium, chromium, lead, zinc and copper remain much below the tolerance limits and no significant impact is exerted on the heavy metal concentration of the water bodies due to immersion of idols. Further, immersion of idols in the temporary immersion ponds has minimized the probability of contamination of the main course of river water.



**Table- 4 Impact of idol immersion during Durga Puja on water quality of Kathajodi river at Cuttack**

Period of monitoring	Location*	pH	DO, mg/l	BOD, mg/l	COD, mg/l	EC, $\mu$ S/cm	Turb. NTU	TDS, mg/l	TS, mg/l	Cd, mg/l	Cr <sup>6+</sup> , mg/l	Pb, mg/l	Zn, mg/l	Cu, mg/l
Pre-Immersion (26.10.2020)	Location-1	7.4	8.9	1.3	11.4	376.2	1.5	216.0	229.0	<0.02	<0.002	<0.1	0.103	<0.03
	Location-2	7.8	8.4	1.4	7.6	356.0	1.1	212.0	238.0	<0.02	<0.002	<0.1	0.099	<0.03
	Location-3	8.2	8.5	1.6	7.6	226.4	1.2	132.0	151.0	<0.02	<0.002	<0.1	<0.01	<0.03
During-Immersion (28.10.2020)	Location-1	8.0	8.3	1.7	11.4	221.0	1.5	132.0	150.0	<0.02	<0.002	<0.1	0.266	<0.03
	Location-2	7.7	8.9	1.7	7.6	367.8	1.0	216.0	222.0	<0.02	<0.002	<0.1	0.014	<0.03
	Location-3	7.7	8.5	2.0	7.6	312.9	2.1	184.0	196.0	0.051	<0.002	<0.1	<0.01	<0.03
Post-Immersion (05.11.2020)	Location-1	7.8	10.5	1.4	7.4	347.1	1.8	208.0	214.0	<0.02	<0.002	<0.1	0.024	<0.03
	Location-2	8.1	9.0	1.4	7.4	345.6	1.0	208.0	211.0	<0.02	<0.002	<0.1	0.029	<0.03
	Location-3	8.1	9.1	1.3	7.4	294.2	1.0	172.0	177.0	<0.02	<0.002	<0.1	<0.01	<0.03
Tolerance limits for Class-C inland surface waters (IS : 2296-1982)		6.5-8.5	4 or more	3 or less	-	-	-	1500	-	0.01	0.05	0.1	15	1.5

- \* Location-1 : Upstream of Immersion pond at Devigada
- \* Location-2 : Immediate downstream of Immersion pond at Devigada
- \* Location-3 : Downstream of Immersion pond near Devigada



**Table- 5 Impact of idol immersion during Durga Puja on water quality of Kuakhai river at Bhubaneswar**

Period of monitoring	Location*	pH	DO, mg/l	BOD, mg/l	COD, mg/l	EC, $\mu$ S/cm	Turb. NTU	TDS, mg/l	TS, mg/l	Cd, mg/l	Cr <sup>6+</sup> , mg/l	Pb, mg/l	Zn, mg/l	Cu, mg/l
Pre-Immersion (22.10.2020)	Location-1	7.6	7.5	1.7	7.8	178.0	28	116	180	<0.02	<0.002	<0.1	<0.01	<0.03
	Location-2	Not Monitored												
	Location-3	8.1	6.8	1.9	7.8	185.0	32	120.0	192	<0.02	<0.002	<0.1	<0.01	<0.03
During-Immersion (28.10.2020)	Location-1	7.5	6.3	1.7	7.6	217.6	3.2	128.0	190	<0.02	<0.002	<0.1	<0.01	<0.03
	Location-2	7.3	5.2	1.8	7.6	255.8	1.9	152.0	228	<0.02	<0.002	<0.1	0.487	<0.03
	Location-3	7.2	4.5	4.0	26.7	269.4	4.2	160.0	211	<0.02	<0.002	<0.1	0.130	<0.03
Post-Immersion (05.11.2020)	Location-1	7.0	9.0	1.6	7.4	199.3	1.0	128.0	136	<0.02	<0.002	<0.1	0.011	<0.03
	Location-2	7.5	8.8	1.4	7.4	254.0	4.0	132.0	147	<0.02	<0.002	<0.1	0.289	<0.03
	Location-3	7.2	7.4	1.8	7.4	200.8	4.5	156.0	174	<0.02	<0.002	<0.1	3.194	<0.03
Tolerance limits for Class-C inland surface waters (IS : 2296-1982)		6.5-8.5	4 or more	3 or less	-	-	-	1500	-	0.01	0.05	0.1	15	1.5

- \* Location-1 : Upstream of Immersion pond at Mancheswar
- \* Location-2 : Immediate Downstream of temporary Immersion pond
- \* Location-3 : Downstream of Immersion pond at Baliana



**Table- 6 Impact of idol immersion during Durga Puja on water quality of Daya river at Bhubaneswar**

Period of monitoring	Location*	pH	DO, mg/l	BOD, mg/l	COD, mg/l	EC, $\mu$ S/cm	Turb. NTU	TDS, mg/l	TS, mg/l	Cd, mg/l	Cr <sup>6+</sup> , mg/l	Pb, mg/l	Zn, mg/l	Cu, mg/l
Pre-Immersion (22.10.2020)	Location-1	7.8	7.8	1.2	15.7	197	33	124	143	<0.02	<0.002	<0.1	<0.01	<0.03
	Location-2	Not Monitored												
	Location-3	7.8	7.9	1.2	7.7	213.2	1.3	128	201	<0.02	<0.002	<0.1	<0.01	<0.03
During-Immersion (28.10.2020)	Location-1	8.1	8.2	1.8	11.4	219.2	2.0	132.0	158	<0.02	<0.002	<0.1	<0.01	<0.01
	Location-2	8.0	7.8	2.0	11.4	234.4	2.0	140.0	151	<0.02	<0.002	<0.1	<0.01	0.067
	Location-3	8.2	7.4	1.7	11.4	225.8	1.7	136.0	151	<0.02	<0.002	<0.1	<0.01	0.048
Post-Immersion (05.11.2020)	Location-1	7.2	9.4	<1.0	7.4	236.4	3.8	152.0	172	<0.02	<0.002	<0.1	<0.01	<0.03
	Location-2	7.3	8.7	1.6	7.4	203.1	1.8	128.0	133	<0.02	<0.002	<0.1	0.118	<0.03
	Location-3	7.4	8.8	2.6	11.1	269.7	1.2	160.0	170	<0.02	<0.002	<0.1	0.174	<0.03
Tolerance limits for Class-C inland surface waters (IS : 2296-1982)		6.5-8.5	4 or more	3 or less	-	-	-	1500	-	0.01	<0.02	0.1	15	1.5

\* Location-1 : Upstream of Immersion pond near Daya bridge at Gelapur

\* Location-2 : Immediate Downstream of Immersion pond

\* Location-3 : Downstream of Immersion pond at Lingipur



**Table- 7 Impact of idol immersion during Durga Puja on water quality of Mangala river at Puri**

Period of monitoring	Location*	pH	DO, mg/l	BOD, mg/l	COD, mg/l	EC, $\mu$ S/cm	Turb. NTU	TDS, mg/l	TS, mg/l	Cd, mg/l	Cr <sup>6+</sup> , mg/l	Pb, mg/l	Zn, mg/l	Cu, mg/l
Pre-Immersion (16.10.2020)	Location-1	7.5	7.5	1.1	7.9	182.0	22	92	136	<0.02	<0.002	<0.1	<0.01	<0.03
	Location-2	Not monitored												
	Location-3	7.2	6.9	1.5	11.9	207.0	38	116	159	<0.02	<0.002	<0.1	<0.01	<0.03
During-Immersion (28.10.2020)	Location-1	7.8	7.6	1.3	11.4	247.4	2.8	148	186	<0.02	<0.002	<0.1	<0.01	<0.03
	Location-2	7.9	6.7	1.3	7.6	234.8	3.5	140	195	<0.02	<0.002	<0.1	<0.01	<0.03
	Location-3	7.7	6.4	1.2	7.6	257.4	3.5	148	175	<0.02	<0.002	<0.1	<0.01	<0.03
Post-Immersion (05.10.2020)	Location-1	7.8	7.8	1.0	7.3	183.8	8	116	196	<0.02	<0.002	<0.1	<0.01	<0.03
	Location-2	7.8	5.2	1.1	7.4	257.3	2.6	156	168	<0.02	<0.002	<0.1	<0.01	<0.03
	Location-3	7.6	8.1	2.8	18.4	319.0	11	196	250	<0.02	<0.002	<0.1	<0.01	<0.03
Tolerance limits for Class-C inland surface waters (IS : 2296-1982)		6.5-8.5	4 or more	3 or less	-	-	-	1500	-	0.01	0.05	0.1	15	1.5

- \* Location-1 : Upstream of Immersion point near Mangala river
- \* Location-2 : At immersion point
- \* Location-3 : Downstream of Immersion point



## 7. Recommendations

- Guidelines of Idol Immersion should be strictly followed by the Puja Committee Organisers during the immersion of idols.
- Puja Committee Organisers should promote the construction of idols from clay only and colouring of the idols with natural colours.
- Adequate number and size of ponds shall be designated for idol immersion and shall be informed with route map by the local administration to the Puja Committee Organisers.
- Municipal authorities shall cooperate the Puja Committee Organisers for removal of the left-over materials of the idol immersions from the immersion sites within 48 hours of immersion and transportation of these debris to the dumpsites.
- Treatment of temporary immersion pond water with lime and discharge of the settled water to main river channel within four days of idol immersion.
- Burning of left-over materials of idol immersion on the banks of river should be prohibited.
- After discharge of water from the temporary immersion ponds, the empty space should be filled with sand.
- Public awareness shall be given more thrust on the ill-impacts of idol immersion and implementation of the Guidelines.
- Public awareness should be created to limit the size of idols and number of idols in a locality in order to decrease the waste load in the form of puja left-overs.

----



## **ANNEXURES**





**Government of Odisha**  
**Office of Special Relief Commissioner**

-----  
No. 5315 /R&DM(DM), Dt.10-09-2020  
RDM-RLF-MISC-0222-2020

**ORDER**

As per COVID-19 Guidelines issued by the State Government vide Order No.5039 /R&DM(DM) dated 31.08.2020, all religious places/ places of worship remain closed for public till 30<sup>th</sup> September, 2020 throughout the State. Social, political, sports, entertainment, academic, cultural, religious functions and other large congregations are not allowed.

Having regard to the order dated 31.8.2020 passed by the Hon'ble High Court in WP(C) PIL No 21016 /2020, the State Government do hereby direct that **the following guidelines shall be followed for observance of Durga Puja, Laxmi Puja, Kali Puja and other similar Puja during September, October and November of 2020:**

1. For conducting Puja in Puja Pandals/ Mandaps, the organizers shall apply to and obtain necessary permission from the District Magistrate or any other officer authorised by him/ her. For the area under Commissionerate of Police of Cuttack and Bhubaneswar, such permission shall be given by the Commissioner of Police of Cuttack and Bhubaneswar or any other officer authorised by him/ her.
2. Puja(s) shall be conducted in indoor-like condition only for observance of rituals without public participation, pomp and grandeur.
3. Puja Pandals/ Mandaps shall be covered on three sides. The 4<sup>th</sup> side shall also be covered in a way not to allow any public view of the idols. There shall be no darshan by public/ devotees.
4. The size of idol shall be less than 4 feet.
5. There shall be no use of public address system.





6. At any given point of time, there shall not be more than 7 persons including organisers (Kartas) and priests and support staff present in the Puja Pandal/ Mandap.
7. The persons present at Puja Pandal/ Mandap shall follow all Covid protocols of social distancing, mask use, personal hygiene and sanitation issued by Central/ State Government/ Local Administration in letter and spirit.
8. The organizers and other persons involved in conducting the Puja shall abide by any other condition(s) as imposed by Local Administration/ appropriate authority.
9. There shall be no immersion procession. The idols will be immersed in artificial pond(s) created by the local administration for the purpose.
10. There shall be no musical or any other entertainment programme.
11. All the District Magistrates/ Municipal Commissioners/ Commissioner of Police, Bhubaneswar-Cuttack shall strictly enforce the above guidelines.
12. **Penal provisions:** Any person violating these measures will be liable to be proceeded against in accordance with the provisions of Section 51 to 60 of the Disaster Management Act, 2005, the Epidemic Diseases Act, 1897 and Regulations issued thereunder besides legal action under Section 188 of the IPC and other legal provisions as applicable.

By order of the Governor

Chief Secretary, Odisha

**Memo No. 5316 /R&DM(DM)      Date: 10-09-2020**

Copy forwarded to the Private Secretary to Hon'ble Chief Minister/ Private Secretary to all Ministers/ Chief Secretary/ Development Commissioner/ Agriculture Production Commissioner for kind information.

Special Relief Commissioner &  
Additional Chief Secretary to Govt.  
(Disaster Management)



**Memo No. 5317 /R&DM(DM)      Date: 10-09-2020**

Copy forwarded to the Addl. Chief Secretary/ Principal Secretary/ Commissioner-cum-Secretary of all Departments/ Director General of Police/ Director General of Police Fire Services/Police Commissioner, Bhubaneswar-Cuttack/ All RDCs/ All Collectors/ Superintendents of Police/ All Municipal Commissioners for kind information and immediate necessary action.

  
10.09.2020  
Special Relief Commissioner &  
Additional Chief Secretary to Govt.  
(Disaster Management)

**Memo No. 5318 /R&DM(DM)      Date: 10-09-2020**

Copy forwarded to the Joint Secretary (Disaster Management), Ministry of Home Affairs (Disaster Management Division), Government of India for kind information.

  
10.09.2020  
Special Relief Commissioner &  
Additional Chief Secretary to Govt.  
(Disaster Management)



OFFICE OF THE  
MUNICIPAL COUNCIL, BHADRAK

BHADRAK-756100 (ODISHA)  
Tel. No. : 06784 - 251519 (O), Fax No. : 06784 - 251221  
E-mail:-bhadrakm.hud@nic.in

2/12/2020  
LABORATORY

No. 7249.

Date: 24/11/20

To,

Member Secretary,  
State Pollution Control Board,  
Odisha Paribesh Bhawan, A/118, Nilakanthanagar,  
Unit-VIII, Bhubaneswar-751012

U J DEC 2020  
STATE POLLUTION CONTROL BOARD  
BHUBANESWAR-12

Sub- Implementation of the guideline prepared by CPCB on practice of Idol Immersion in sea, rivers & lakes-reg

Ref- Your letter no-7299, dt.13.08.2020 & letter no-10757, dt.02.11.2020  
addressed to the Collectors & District Magistrates

Sir,

With reference to the subject cited above, I am to say that as per guidelines the Idol Immersion in festival of Durga Puja & Kalipuja have been done by this municipality in the Temporary Ponds at Charampa, Bagurai Daganunda, Ashram Ghat, Parana Bazar & Charampa specially created for the purpose. The Photographs of above Immersion of Durga Puja & Kali Puja are enclosed herewith for favour of reference.

SES

This is for favour of kind information & necessary action.

Encl- As above

Yours faithfully

LP  
JN

Executive Officer  
Bhadrak Municipality

Memo No- 7250

Date: 24/11/20

Copy submitted to the Collector & District Magistrate, Bhadrak for favour of kind information

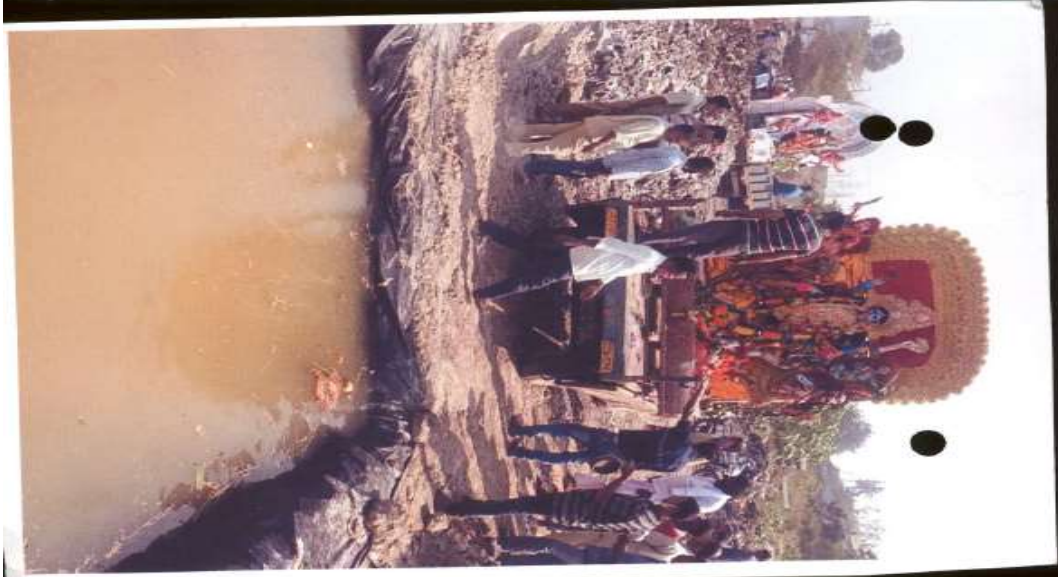
SES (let)  
ES

ES (AD)  
A. K. SINGH  
2/12

Executive Officer  
Bhadrak Municipality



# Impact of Idol Immersion on Water Quality of Aquatic Bodies-2020





# Impact of Idol Immersion on Water Quality of Aquatic Bodies-2020



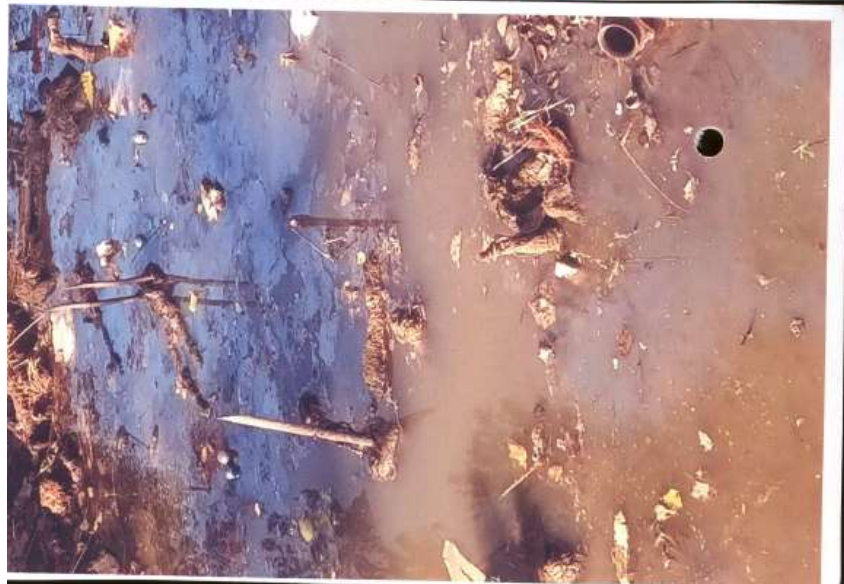


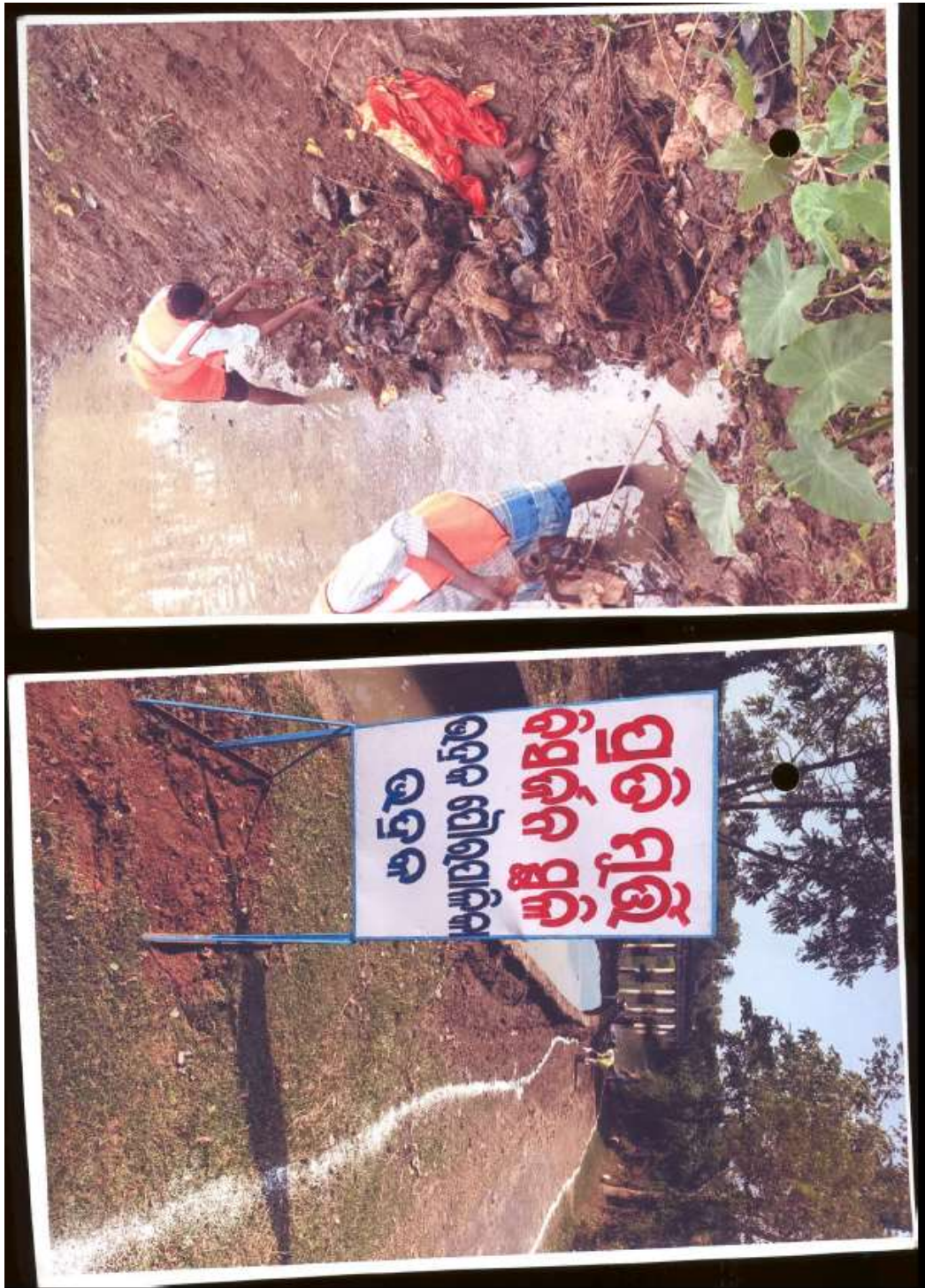
# Impact of Idol Immersion on Water Quality of Aquatic Bodies-2020





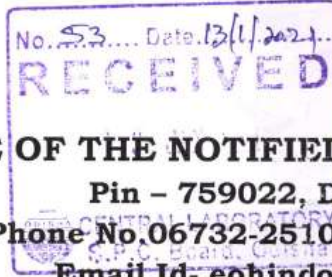
# Impact of Idol Immersion on Water Quality of Aquatic Bodies-2020











Kejari

**OFFICE OF THE NOTIFIED AREA COUNCIL, HINDOL.**

Pin - 759022, Dist - Dhenkanal.

Phone No. 06732-251052, Fax-06732-251053

Email Id- eohindolnac13@gmail.com

Letter No. 1540 / Dt. 23.12.2020

To

The Member Secretary,  
State Pollution Control Board,  
Paribesh Bhawan, A/118,  
Nilakanthanagar, Unit-VIII,  
Odisha.

Sub:- Implementation of the guideline prepared by CPCB, on practice of  
Idol immersion in sea, rivers and lakes-Reg.

Ref:- Letter No.XXIV-01/20-10342/Dev. Dt.25.11.2020.

Sir,

In inviting a kind reference to the above letter on the captioned  
subject, I am to submit herewith the required information in prescribed format  
for favour of your kind information and necessary action.

Enclosure:- As Above

Yours faithfully,

Executive Officer,  
NAC Hindol.

Memo No. \_\_\_\_\_ / Dt. \_\_\_\_\_

Copy forwarded to the Asst. Collector, Development, Collectorate,  
Dhenkanal for kind information and necessary action.

Executive Officer,  
NAC Hindol.

ES (GAD)  
N. Mallik  
13/2



**Format**

At-Kandarasuni, W. No.12 of Hindol NAC





**OFFICE OF THE NOTIFIED AREA COUNCIL, NUAPADA**

nuapadanac@gmail.com

No. 2671

Dt. 12.11.2020

To

The Member Secretary  
State Pollution Control Board, Odisha  
Paribesh Bhawan, A/118,  
Nilakanthanagar, Unit-VIII  
Bhubaneswar.

Sub:- Implementation of the guideline prepared by CPCB on  
practice of idol immersion in sea, rivers and lakes-Reg.

Ref:- Your letter No.10757 Dt.02.11.2020

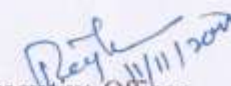
Sir,

In inviting a reference to the letter on the subject cited above I am to intimate that as per guideline for "Idol Immersion" the idols were immersed in the ponds, canal inside the NAC area by the barricading of the immersion place and the garbage comes out after immersion was transported to the dumping yard of NAC through vehicle soon after Durga pooja festival was over. Similar action will be taken during Kali Pooja and other festivals.

This is for favour of your kind information.


Encl: Photos.

Yours faithfully

  
Executive Officer  
NAC Nuapada

Memo No. 2672 (2) Dt. 12.11.2020

Copy submitted to Collector, Nuapada/PD-DUDA, Nuapada  
for kind information.

  
Executive Officer  
NAC Nuapada



# Impact of Idol Immersion on Water Quality of Aquatic Bodies-2020





କୋରପୁଟ ପରିଷଦ, କୋରାପୁଟ  
KORAPUT MUNICIPALITY

No. 4109 / 2020

To,

The Member Secretary,  
State Pollution Control Board, Odisha,  
Paribesh Bhawan, A/118, Nilakanthanagar, Unit-VIII,  
Bhubaneswar.

Sub: Implementation of the guideline prepared by CPCB on practice of  
idol immersion in sea, rivers and lakes- Reg.

Ref: Your letter No. 10757/SPCB Dt. 02.11.2020

Sir,

In inviting a reference to the letter on the above subject, I am enclosing herewith the photographs regarding support on follow of guideline circulated vide letter No. 7294/SPCB Dt. 13.08.2020 & Dist. Office letter No. 3136 Dt.24.10.2020 on immersion of diols. In this regard this Municipality has constructed before Durga Puja, a temporary pond at river bank of Kolab near Duruguda on the way to Sunabeda and the same has been cleaned soon after the festive seasons completed.

This is for favour of your kind information and necessary action.

SES (L.S.)  
4/11/20

ES (C.R.W.)  
U. Kallakur  
14/11/20

Encl: As above.

Yours faithfully,

Executive Officer,  
Koraput Municipality.













OFFICE OF THE

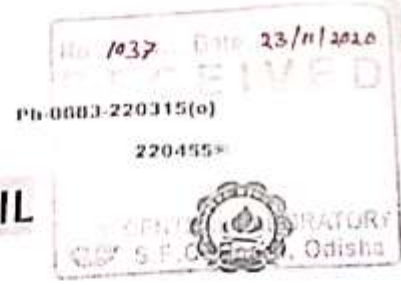
MUNICIPAL COUNCIL  
SUNABEDA

SUNABEDA-763003

DIST: KORAPUT (ODISHA)

FAX NO: 06853 221039, Mail ID: [sunabedhan.hud@nic.in](mailto:sunabedhan.hud@nic.in)

Website: [www.sunabedamunicipality.in](http://www.sunabedamunicipality.in)



Ref No 3348

Dt 20.11.2020

To

The Member Secretary  
State Pollution Control Board, Odisha  
Department of Forest & Environment  
Paribesh Bhawan, A/118, Nilakanthanagar  
Unit VIII, Bhubaneswar -751012

Sub: Implementation of guidelines prepared by CPCB on practice of idol immersion in sea rivers and lakes -Reg.

Ref:- Letter No 10575 Dt-02.11.2020.

Sir,

With a reference to the letter on the subject cited above, I am to say that, during immersion of Idols on festive occasions such as Durga Puja, Kalipuja, Laxmi Puja etc, all the guidelines implemented in Sunabeda Municipality area and the Idols were immersed in artificial pond with follow-up of Covid -19 guidelines. The immersion photographs are enclosed herewith for your kind reference.

This is for favour of your kind information and necessary action.

Yours faithfully

Executive Officer  
Sunabeda Municipality

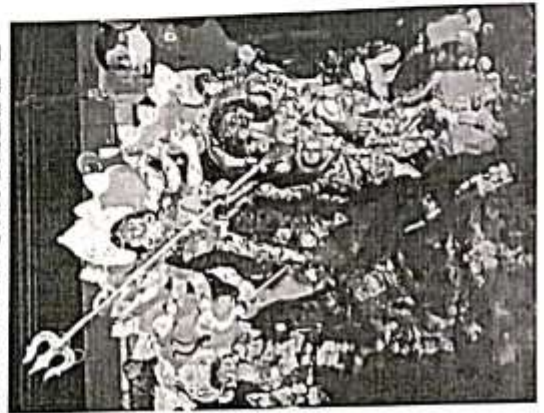
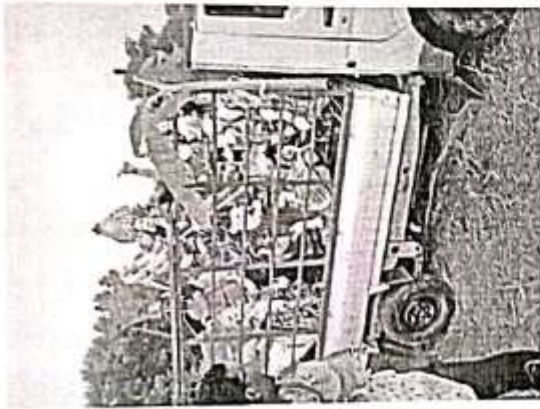
Memo No 3349

Copy submitted to the Collector, Koraput / PD,DUDA, Koraput for favour of kind information and necessary action.

Dt 20.11.2020

Executive Officer  
Sunabeda Municipality

ES(URP)  
H. K. Mahapatra  
03/11



SUNABEDA MUNICIPALITY

