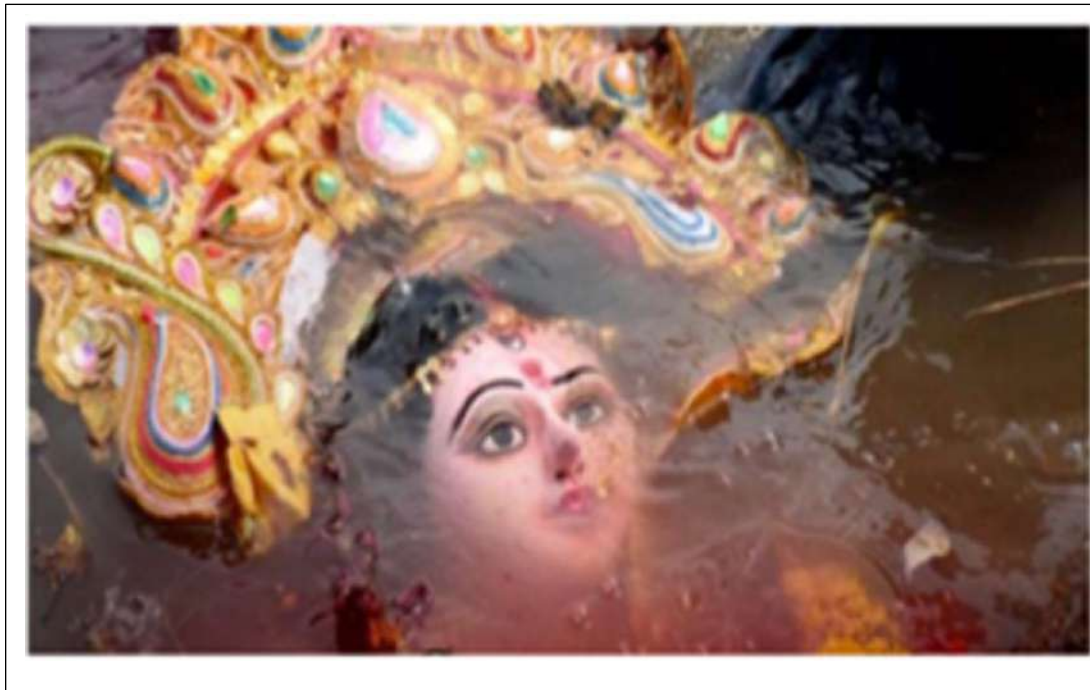


# **IMPACT OF IDOL IMMERSION DURING DURGA PUJA ON WATER QUALITY OF AQUATIC BODIES -2022**



**STATE POLLUTION CONTROL BOARD, ODISHA**  
PARIVESH BHAWAN, A-118, NILAKANTHANAGAR  
UNIT-VIII, BHUBANESWAR-751012

**November, 2022**



## CONTENTS

|    |   | Page No. |
|----|---|----------|
| 1. | Introduction  | 1        |
| 2. | Guidelines for idol immersion   | 2        |
| 3. | Actions taken by the State Pollution Control Board, Odisha                  | 5        |
| 4. | Actions taken for implementation of the Guideline during immersion of idols | 8        |
| 5. | Actions taken by the Puja Committee Organisers                              | 14       |
| 6. | Impact of idol immersion on water bodies                                    | 15       |
| 7. | Recommendations   | 33       |
| 8. | Annexures   | 35-86    |



### **List of Tables**

- Table-1 : Date of pre-, During and Post-immersion monitoring for Durga Puja in different municipal areas
- Table-2 Information on Temporary Idol Immersion Ponds constructed by ULBs
- Table-3 Water Quality Assessment conducted during Durga Puja
- Table- 4 Impact of idol immersion during Durga Puja on water quality of Kathajodi river at Cuttack
- Table- 5 Impact of idol immersion during Durga Puja on water quality of Kuakhai River at Bhubaneswar (Near Hansapal)
- Table- 6 Impact of idol immersion during Durga Puja on water quality of Kuakhai River at Bhubaneswar (Near Palasuni)
- Table- 7 Impact of idol immersion during Durga Puja on water quality of Daya River at Bhubaneswar (Near Tankapani)
- Table- 8 Impact of idol immersion during Durga Puja on water quality of Daya River at Bhubaneswar (Near Lingipur)
- Table- 9 Impact of idol immersion during Durga Puja on water quality of Brahmani River at Rourkela
- Table- 10 Impact of idol immersion during Durga Puja on water quality of Mangala river in Puri Municipality
- Table- 11 Impact of idol immersion during Durga Puja on water quality of Idol Immersion ponds in Sambalpur Municipal Corporation
- Table- 12 Impact of idol immersion during Durga Puja on water quality of Idol Immersion ponds in Berhampur Municipal Corporation



## List of Figures

- Fig. 1 Appeal to Public to observe pollution free Ganesh puja, Durga Puja, Laxmi Puja and Kali Puja through Public Notice on Newspapers
- Fig. 2 Construction of temporary idol immersion pond on the bank of Kuakhai river in Bhubaneswar
- Fig. 3 Construction of temporary idol immersion ponds on the bank of Kathajodi river at Devigada, Cuttack
- Fig. 4 Filling of temporary immersion ponds with River water
- Fig. 5 Light arrangement around the temporary immersion ponds for hassle free immersion process
- Fig. 6 Removal of immersion left overs from the pond for next batch of immersion
- Fig. 7 Action taken for removal of immersion left overs from the temporary immersion pond
- Fig. 8 Post-immersion view of an idol immersion pond along river
- Fig. 9 Sketch map of Idol immersion monitoring stations on River
- Fig. 10 Temporary idol immersion pond and River side by side after removal of immersion left overs from the pond
- Fig. 11 Variation of BOD (in mg/L) in temporary immersion ponds constructed in Cuttack on the bank of Kathajodi river
- Fig. 12 Variation of BOD (in mg/L) in temporary immersion ponds constructed in Bhubaneswar on the bank of Kuakhai River at Palasuni
- Fig. 13 Variation of BOD (in mg/L) in temporary immersion ponds constructed in Bhubaneswar on the bank of Daya River
- Fig. 14 Variation of BOD (in mg/L) in temporary immersion ponds constructed in Rourkela on the bank of Brahmani River
- Fig. 15 Variation of BOD (in mg/L) in temporary immersion ponds constructed in Puri along Mangala River
- Fig. 16 Variation of BOD (in mg/L) in temporary immersion ponds constructed in Sambalpur
- Fig. 17 Variation of BOD (in mg/L) in temporary immersion ponds constructed in Berhampur
- Fig. 18 Immersed left overs in the temporary immersion ponds
- Fig. 19 Water quality monitoring in rivers



## 1. Introduction

In Hindu calendar, months from Ashadha to Magha (that is, September to February in English calendar) has a special importance because of festive occasions like Ganesh Puja, Biswakarma Puja, Durga Puja, Gajalaxmi puja and Kali Puja which are celebrated with much pomp and galore and also in mass scale. All such pujas involve idol worship which is later followed by idol immersion in nearby water bodies as a religious practice ( popularly known as bisarjan). In present days, celebration of Khudurukuni puja, Janmastami, Kartikeswar Puja involving idols are also increasing now-a-days in Odisha. Usually, Ganesh Puja, Biswakarma Puja and Khudurukuni puja are also celebrated in individual scale which ultimately increases the number of idols and puja left-overs to be immersed in water bodies.

Since these pujas are mostly celebrated in monsoon or post-monsoon seasons, and the flow in rivers are high during this period, immersion of idols and puja offerings in the rivers usually have no significant impact on the water quality. However, with the increase in number and size of idols, use of alternate materials other than clay for making the idols, use of synthetic paints and varnishes rather than natural dyes to decorate the idols in present years and moreover, decreased flow in rivers, has increased the probability of contamination of water bodies. Besides these, dumping of puja left-overs such as vastras on idols, flowers, decorating materials (made of paper and plastic), etc. in water bodies during this immersion process has also increased the risk of contamination of water bodies as well as deteriorates the aesthetic quality of the water bodies. Further, this may also affect the aquatic ecosystem at the immersion sites as well as its down-streams.

Such pollution of waterbodies now necessitates the intervention of regulatory authorities, district administration, municipal bodies and also awareness of public, Puja Committee organisers, idol makers and moreover, sensitization of the civic bodies.

With this background, Central Pollution Control Board (CPCB) has prepared the "Revised Guidelines for Idol Immersion (12.5.2020)" for implementation during immersion of idols in aquatic bodies with the objective to minimize the pollution load on aquatic bodies.



## 2. Revised Guideline for Idol Immersion

The revised guideline prescribes the roles of local bodies/ authorities, Puja Committee Organisers and State Pollution Control Boards or Pollution Control committees for implementation of the Guideline to minimize the impact of idol immersion activities on the aquatic bodies.

These guidelines have been prepared with a view to use eco-friendly idols as well as to ensure environmental friendly idol immersion without affecting the quality of water bodies while ensuring religious observance. These guidelines emphasize the need for restriction on single use plastic materials for making idols, use of naturally occurring colors for coloring idols, imposing restrictions on size of the idol, construction of temporary synthetic lined ponds of adequate capacity, safe disposal of solid wastes generated during visarjan/immersion activities, etc.

In view of changing scenario for safe disposal of idol immersion in water bodies in cities, towns & rural areas, CPCB has revised the Guideline for idol immersion in the year 2020 after a thorough discussion of comments/suggestions of stakeholders received, emphasizing the need of identification of idol makers for manufacture of environment friendly idols, coloring by natural and biodegradable colours only, use of clay for idol making, ban of thermocol and single use plastics in decoration and prasad sevan, safe practices during immersion to prevent casualties and imposition of fines have been incorporated and earlier guidelines issued by CPCB "Guidelines for Idol Immersion" (PROBES/136/2010) has been revised and made it effective from Dt. 01.01.2021. The Revised Guidelines for Idol immersion (12.5.2020) may be downloaded from the website of CPCB and also of SPCB. (Weblink for Odisha SPCB : [http://ospcbboard.org/wp-content/uploads/2020/06/295\\_1589273986\\_mediaphoto24365.pdf](http://ospcbboard.org/wp-content/uploads/2020/06/295_1589273986_mediaphoto24365.pdf) ). The salient features of the Revised Guidelines are as follows.

### (a) General Guidelines for idol makers

- Craftsmen or artisans involved in making idols should be registered with the civic bodies, and should involve in making eco-friendly idols.
- Use of traditional clay for making idols should be encouraged.



- Use of water soluble, non-toxic natural dyes should be encouraged to colour the idols rather than painting of idols.
- In case of large scale Idol manufacturers (at least involved in making more than 100 idols in a day) shall obtain registration from the concerned ULBs (registration fee along with a deposit as decided by the ULB depending on the idol making capacity) and failing to comply with these guidelines or any violation of registration conditions, the deposit shall be forfeited by the ULB apart from prohibition of idol making at least for two years.

**(b) General Guidelines for Puja Committee Organisers**

- As far as possible, low height and eco-friendly idols (made with natural clay, idols stuffed with eco-friendly food materials, idols decorated with biodegradable, organic colours only should be used for offering poojas to avoid impact on environment.
- In the interest of protection of the environment, Pooja Organizing Committees should procure eco-friendly idols only from the respective ULBs registered or authorised craftsman or artisans.
- Pooja Organising Committees should seek prior permission from concerned ULB as the case may be by providing management plan and the required provisions for ensuring safe idol immersion during festival season in advance for making necessary arrangements in consultation with the concerned departments.
- Ban on use of single use plastic materials, thermocool for decoration and Prasad sevans purposes.
- Worship material like flowers, Patri (leaves), vastras (clothes), decorating materials (made of paper and bio-degradable or compostable plastic but not single use plastic) etc. should be ensured to remove before immersion of idols and segregated in colour coded bins provided at the designated idol immersion areas/spots.

**(c) General Guidelines for idol immersion**

- Mass awareness programmes should be conducted to aware the Public on ill effects of idol immersion.



- All idols should be immersed in the designated area for idol immersion which is cordoned, barricaded and preferably lined with synthetic liner. After immersion, the liner should be removed to collect the dumped materials for final disposal at appropriate places.

**(d) General Guidelines for Local bodies/ Authorities**

- In the interest of protection of environment, Urban and Local bodies (ULBs) shall impose restrictions on height of the idol to the idol making agencies or craftsman or artisans (lesser the size of the idol better would be the immersion process and less consumption of materials required for making idols) depending on the availability of water bodies, provisions made for idol immersions by the ULBs.
- Local bodies/ Authorities should identify adequate number of idol immersion spots to avoid overcrowding and to reduce pollution load on the water bodies. Such spots should be notified and informed to the Puja Committees through awareness programmes.
- At the immersion of sites, burning of solid wastes so generated during the immersion of idols, should be prohibited.
- Within 24 hours of completion of idol immersion activities, the left over materials at the immersion sites should be collected by the local bodies for final disposal at appropriate places.
- In case of immersion of idols in rivers and lakes, arrangements may be made for construction of temporary confined ponds with earthen bunds for the purpose of immersion of idols. After the completion of immersion, supernatant water may be allowed to flow as usual after checking for colour and turbidity. Lime may be allowed to the temporary confined pond.
- Mass awareness programmes may be conducted to educate the people on ill effects of toxic idol immersion.
- Encourage the resident welfare associations in a city or town to create temporary ponds/tanks of suitable size and adequate capacity within their campus with necessary provision for collection and storage of segregated waste





prior to immersion. Individual households may be encouraged to utilize such ponds for immersion purpose.

**e) Role of State Pollution Control Boards (SPCBs) and Pollution Control Committees (PCCs)**

- Concerned SPCB/ PCC should conduct water quality monitoring of water bodies at the immersion sites preferably in Class-I cities (having population more than one lac), at three stages i.e. Pre-immersion, during immersion and post-immersion. During post-festival, samples should be collected preferably after 3<sup>rd</sup>, 5<sup>th</sup>, 7<sup>th</sup> and 9<sup>th</sup> day of the festival.
- For ascertaining water quality, physico-chemical parameters such as pH, DO, Colour, BOD, COD, Conductivity, Turbidity, TDS, Chloride, TSS, Hardness, Total alkalinity and Metals such as Chromium, lead, zinc, copper Cadmium, Mercury, Antimony, Barium, Cobalt, Manganese, Strontium may be analysed.
- Apart from the water samples, sediment samples also be collected during pre-immersion, during immersion and post-immersion and collected sediment samples be analysed for the metals (such as Chromium, Lead, Zinc, Copper, Cadmium, Mercury, Antimony, Barium, Cobalt, Manganese, Strontium).
- Detailed reports may be posted on the SPCBs/PCCs website in public domain. Detailed reports also be shared with Ministry of Environment, Forest and Climate Change (MoEF & CC), Ministry of Jal Shakti (MoJS) and CPCB.

**3. Actions taken by the State Pollution Control Board, Odisha**

In the year 2015, Hon'ble High Court of Orissa have intervened in this matter and vide their order dated 07.10.2015 directed the State Pollution Control Board, Odisha to render necessary assistance to the District Collectors and ensure strict compliances of the Guidelines for Idol Immersion during the Durga Puja and other pujas to follow thereof. In compliance to the order, every year Board is making an intensive as well as proactive approach to ensure the implementation of the Guidelines in all the urban local bodies of the State.

Further, the Forest, Environment and Climate Change Department in Govt. of Odisha has notified the "**Odisha Prevention and Control of Water Pollution (Procedure for Immersion of Idol after Pujas) Rules, 2021**" vide Notification No. 17937 dated 14.10.2021 in

compliance to the directions of the Hon'ble National Green Tribunal, Eastern Zone Bench, Kolkata in connection with O.A.No.51/ 2016 (Ambarnath Sengupta – Vs – The State of West Bengal & Ors.), (order dated 06.10.2017), in consultation with the State Pollution Control Board, Odisha. The Rule has been made comprising the Revised Guidelines of Idol immersion (12.5.2020) prepared by CPCB and Hon'ble NGT directions. The Gazette Notification has been circulated among all stakeholders vide letter No. 3369 dated 04.3.2022 (Annexure-1) for effective implementation and also has been uploaded in Board's website for public awareness and wider circulation. (weblink : <http://ospcboard.org/wp-content/uploads/2021/10/FE-CC-Notification-on-Idol-Immersion-Rule.pdf>)

Like previous years, to minimize the impact of idol immersion on the water quality, the State Pollution Control Board, Odisha has taken following steps during the year 2022, as recommended in the Guideline for idol immersion and Idol immersion Rules.

- Created public awareness through Public Notice on safe Idol immersion practices in Local Newspapers and in Board's website. (Fig.1).

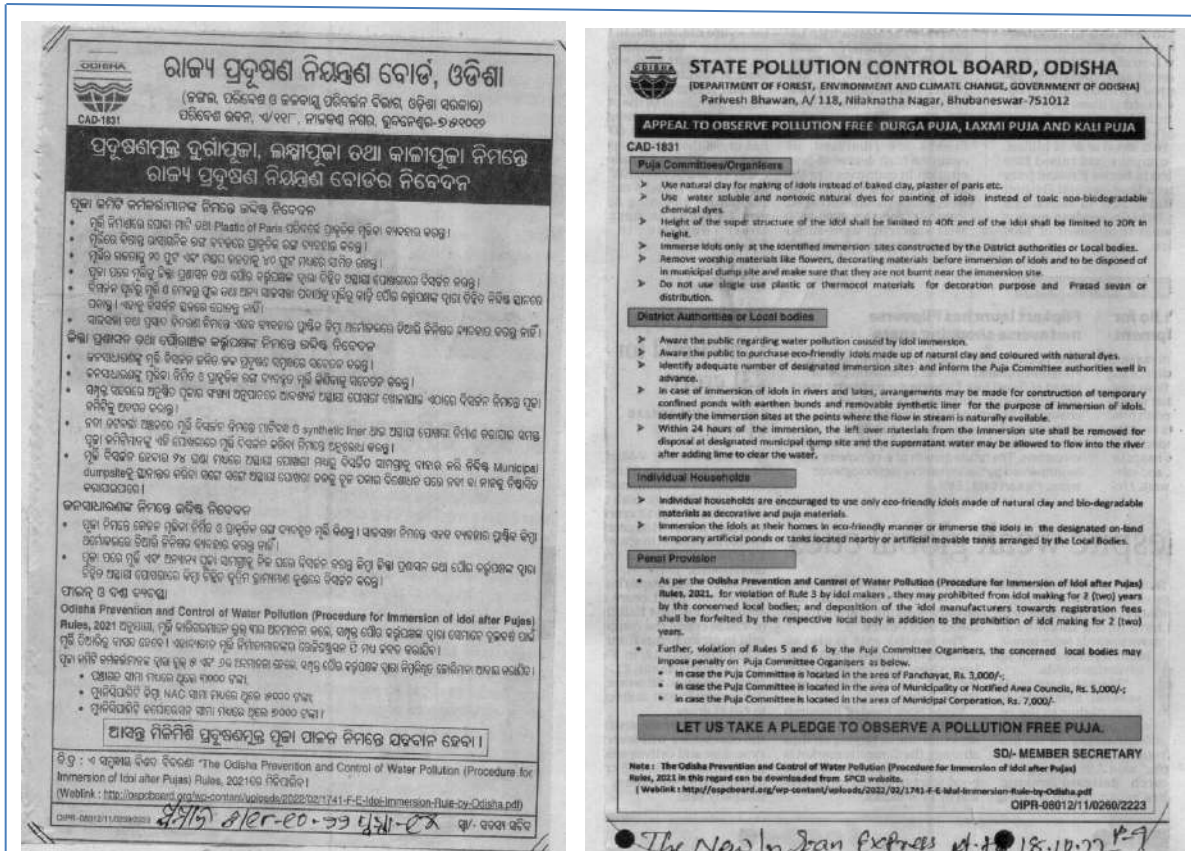


Fig. 1 Appeal to Public to observe pollution free Ganesh puja, Durga Puja, Laxmi Puja and Kali Puja through Public Notice on Newspapers



- The public notice has also been published in newspaper of one Odia language and one English language in every three days gap for public awareness (Annexure-2 and 3).
- Informed all the District Collectors and authorities of urban local bodies of the State prior to Durga Puja to strictly implement the Guidelines of Immersion in their areas of jurisdiction. (Letter No. 15235 dated 24.8.2022) (Annexure-4)
- Made several meetings with the local bodies/ authorities, Puja Committee Organizers to create awareness on ill impacts of Idol immersion in water bodies and distributed leaflets containing public notice among the puja committee organisers and other Puja mandaps.
- Coordinated with the local bodies/ authorities for construction of temporary immersion ponds near rivers as prescribed in the Guideline.
- Conducted water quality assessment of the water bodies during Durga Puja in three stages i.e. Pre-immersion, during immersion and post-immersion in all five Municipal Corporation areas such as Bhubaneswar, Cuttack, Sambalpur, Rourkela and Berhampur and also in one municipal area like Puri. As during Durga Puja, idols are immersed usually after the day of Dashahara, the during-immersion monitoring was conducted on the next day after immersion. The Post-monitoring was conducted after 3<sup>rd</sup> day, 5<sup>th</sup> day, 7<sup>th</sup> day and 9<sup>th</sup> day of the idol immersion. The date of monitoring in different municipal areas has been detailed in Table-1. In case of Berhampur Municipal Corporation, idols are immersed in temporary immersion ponds constructed for the purpose within the city limits. Water quality was conducted in Pre- and During- immersion period only in Berhampur.

**Table-1 : Date of pre-, During and Post-immersion monitoring for Durga Puja in different municipal areas**

| Urban Body                        | Local | Water body                     | Pre-immersion | During Immersion          | Post-immersion |
|-----------------------------------|-------|--------------------------------|---------------|---------------------------|----------------|
| Bhubaneswar Municipal Corporation |       | Kuakhai River                  | 30.9.2022     | 07.10.2022                | 10.10.2022     |
|                                   |       | Daya River                     |               |                           | 12.10.2022     |
|                                   |       |                                |               |                           | 14.10.2022     |
|                                   |       |                                |               |                           | 18.10.2022     |
| Cuttack Municipal Corporation     |       | Kathajodi River                | 29.9.2022     | 07.10.2022                | 10.10.2022     |
|                                   |       |                                |               |                           | 12.10.2022     |
|                                   |       |                                |               |                           | 14.10.2022     |
|                                   |       |                                |               |                           | 17.10.2022     |
| Sambalpur Municipal Corporation   |       | Temporary Idol immersion ponds | 03.10.2022    | 07.10.2022                | 10.10.2022     |
|                                   |       |                                |               |                           | 12.10.2022     |
|                                   |       |                                |               |                           | 14.10.2022     |
|                                   |       |                                |               |                           | 16.10.2022     |
| Rourkela Municipal Corporation    |       | Brahmani River                 | 05.10.2022    | 08.10.2022                | 11.10.2022     |
|                                   |       |                                |               |                           | 13.10.2022     |
|                                   |       |                                |               |                           | 15.10.2022     |
|                                   |       |                                |               |                           | 17.10.2022     |
| Berhampur Municipal Corporation   |       | Immersion Pond                 | 05.10.2022    | 11.10.2022 and 12.10.2022 | Not Monitored  |
| Puri Municipality                 |       | Mangala River                  | 30.9.2022     | 10.10.2022                | 12.10.2022     |
|                                   |       |                                |               |                           | 14.10.2022     |
|                                   |       |                                |               |                           | 18.10.2022     |

#### 4. Actions taken for implementation of the Guideline during immersion of Idols

In all urban local bodies of the State, temporary immersion ponds were constructed on the bank of the rivers by the district administrations in coordination with the municipal authorities, before the day of idol immersion. The ponds were lined with removable synthetic liner at its bottom well in advance of the idol immersion (Fig. 2 and 3). The ponds were filled with water before the day of immersion with the water from the nearby rivers or other water bodies (Fig. 4) . Sign boards were installed at different locations of the ULBs to display route maps to the immersion ponds. Light arrangements were also made around the idol immersion ponds for hassle free idol immersion process (Fig 5.). Location of the idol immersion sites and route map were also informed to the Puja committee authorities and were instructed to immerse the idols only at the designated immersion sites.



Fig. 2 Construction of temporary idol immersion pond on the bank of Kuakhai river in Bhubaneswar



Fig. 3 Construction of temporary idol immersion ponds on the bank of Kathajodi river at Devigada, Cuttack



Fig.4 Filling of temporary immersion ponds with River water



Fig.5 Light arrangement around the temporary immersion ponds for hassle free immersion process



The said liner along with remains of the idols were removed at most of the places within 24 hours of idol immersion. The left over-materials were collected by the local bodies for disposal in municipal dumpsites. After that the bleaching powder was added to disinfect pond water and treated with lime for settlement.

As other pujas involving idol immersion, such as, Gaja Laxmi puja, Kali Puja, Kartikeswar Puja were there within fifteen days to one month gap back-to-back, the immersion ponds were left vacant as such for immersion purposes. Before each immersion process, municipal authorities have taken adequate steps to make ready these ponds by lining the bottom with synthetic liner and filling the pond with water.

As per the information received from different urban local bodies in the State and Regional Officers of the Board, details of temporary idol immersion ponds constructed for the purpose, approximate number of idols immersed during the process are given below (Table-2).

**Table-2 Information on Temporary Idol Immersion Ponds constructed by ULBs**

| Name of ULB                       | Temporary Idol Immersion Pond constructed   | Approx. size of ponds   | Number of Idols immersed |
|-----------------------------------|---|---|--------------------------|
| Balasore Municipality             | 1 number on the bank of river Budhabalanga at Balighat                              | 21 m x 18 m x 3 m   | Not provided             |
| Baripada Municipality             | 1 number on the bank of river Budhabalanga at Madhuban                              | 65 ft x 65 ft x 10 ft   | Not provided             |
| Berhampur Municipal Corporation   | 1 number near Ambapua Main Road   | Size not provided   | Not provided             |
|                                   | 1 number near Haridakhandi Main Road  | Size not provided   | Not provided             |
|                                   | 1 number near Gosaninugaon  | Size not provided   | Not provided             |
|                                   | 1 number near Meenakshi Nagar Main Road   | Size not provided   | Not provided             |
| Bhadrak Municipality              | 2 numbers on the bank of river Salandi  | Each of size 50 ft x 15 ft x 10 ft                                    | Not provided             |
| Balangir Municipality             | 1 pond near Tulsinagar, Circuit House Road, Balangir                                | 60 ft x 50 ft x 4 ft  | 18                       |
| Bhubaneswar Municipal Corporation | 1 No on the on the bank of river Kuakhai,<br>2 Nos on the on the bank of river Daya | 130 ft x 80 ft x 10 ft<br>50 ft x 35 ft x 5 ft<br>50 ft x 20 ft x 5ft | Not provided             |

|                                |  |                        |              |
|--------------------------------|--|------------------------|--------------|
| Cuttack Municipal Corporation  | 11 numbers on the bank of river Kathajodi and Mahanadi   |                        | Not provided |
| Jajpur Municipality            | 1 number on the bank of river Baitarani at Debigarh ghat   | 23 m x 20 m x 10 m     | 58 Nos.      |
| Jatani Municipal Council       | 1 no at Sandhapaur   | 150 ft x 75 ft x 10 ft | Not provided |
| Rourkela Municipal Corporation | 1 pond on the bank of river Brahmani at Balughat   | 140 ft x 180 ft x 8 ft | 120 Nos.     |
| Sundargarh Municipality        | 1 pond on the bank of river IB at Mahadevpada Village  | 42 M x 40 M x 2.5 M    | 5 Nos.       |
| Vyasanagar Municipality        | 1 number on the backside of the Court  | 13 m x 12 m x 4 m      | 12 Nos.      |
| Jagatsinghpur Municipality     | Temporary confined earthen ponds at Galupada, Purohitpur and two places of Alaka river near College Road | Not provided           | Not provided |

Within 24 hours of completion of idol immersion, the left-overs were removed by the volunteers from Puja Committees alongwith personnels from municipalities and transported to the designated municipal dumpsites of the respective areas for disposal. Excavators were also utilized for removal of idols from the ponds. Immersion of idols in the temporary idol immersion ponds, removal of immersion left-overs from the ponds, transportation to designated dumpsites are shown in Figures 6- 8.



Fig. 6 Removal of immersion left overs from the pond for next batch of immersion





Fig. 7 Action taken for removal of immersion left overs from the temporary immersion pond



Fig. 8 Post-immersion view of an idol immersion pond along river



### **(b) Actions taken for implementation of the Guideline during immersion of Idols in Ponds**

In absence of rivers in the cities, idols were immersed in the ponds. In some urban local bodies, temporary immersion ponds were constructed for such purpose, Such ponds were also lined with the synthetic liner and filled with water from nearby waterbodies prior to the day of immersion. All other arrangements like sanitary condition of the immersion site, light arrangement, route map are were made by the Urban local bodies to facilitate the immersion process in these ponds.

In Berhampur Municipal Corporation area during Ganesh Puja, the Self Help Groups did not allow the puja organisers and even the households to immerse their Ganesh idols in the ponds. For which, the Municipal authorities created four ponds for immersion purpose which were later used for immersion of Durga idols and other idols in following other pujas. Such ponds were also constructed in other urban local bodies of the State. In Sambalpur Municipal Corporation , five temporary immersion ponds were created for the purpose.

As per the Guideline, the designated corner of the pond was cordoned with removable synthetic liner prior to idol immersion. The said liner along with remains of the idols were removed within 24 hours of idol immersion. The left over-materials were removed by the local bodies for disposal in designated dumpsites.

Copies of the actions taken reports submitted by the urban local bodies and Regional officers of the State Pollution Control Board are enclosed as Annexure- 6 – 22.

## **5. Actions taken by the Puja Committee Organsiers**

In Odisha, all idols, in general, are made from natural clay as per religious practice. After constant persuasion of the district administration and municipal authorities, idols were colored with natural and ecofriendly colours instead synthetic colours. Large size idols were made using clay, bamboo, straw and other such materials. Efforts were also made for puja mandap decorations using biodegradable materials, bamboo materials. Prasad bitaran was also done with leaf plates instead of using plastic plates.

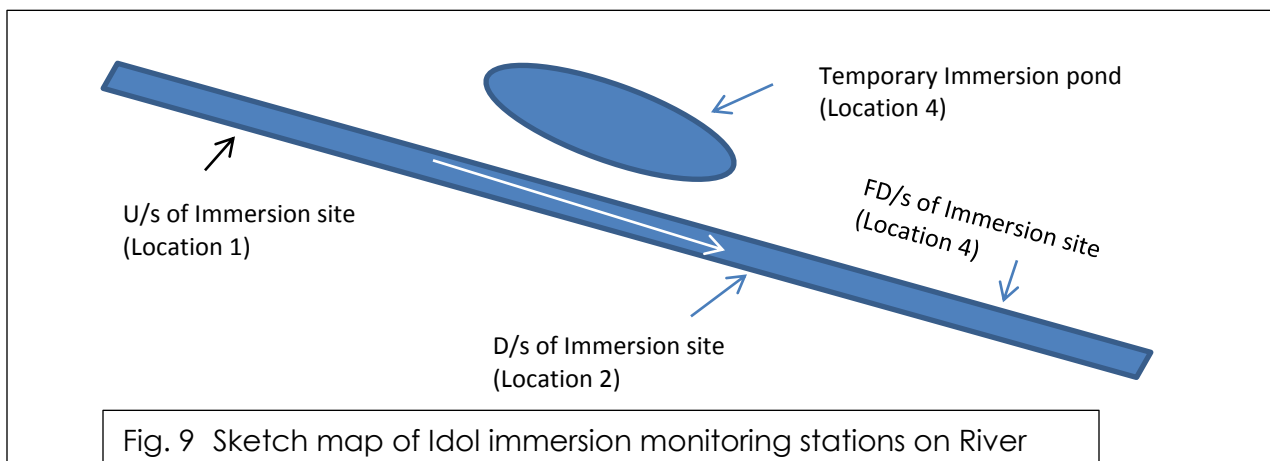
All Puja committee organisers followed the guidelines of concerned Police authority and municipal authorities for immersion in the temporary ponds on the scheduled day of immersion and designated temporary immersion ponds to prohibit the crowding at the immersion site and traffic congestion due to immersion procession.

Puja Committee Organizers also engaged volunteers to remove the immersion left overs from the pond within 24 hours of completion of immersion process in coordination with the municipal authorities. The waste materials were handed over to the municipal personnel to dispose at municipal dumpsites.

### 6. Impact of Idol Immersion on water bodies

To assess the Impact of idol immersion on the water quality of rivers, evaluation of water quality status has been carried out in comparison with Class C surface water bodies (IS : 2296 (1982)). Besides these, as per revised guidelines, water quality were also assessed with respect to drinking water specification (IS 10500 (2012)).

To assess the impact of idol immersion during Durga Puja on water bodies, the Board had conducted water quality assessment studies of the rivers flowing along five Municipal Corporation areas and three municipal areas as mentioned in Table-1. As per the Revised Guidelines, water quality monitoring was conducted in three stages i.e. pre-immersion, during- immersion and post- immersion period of Durga Puja. Date of monitoring in these municipal area are not same as the idol immersion of Lord Durga were done in different days. At all locations, temporary idol immersion sites were constructed on the bank of the river. Samples were collected from the upstream of the Idol immersion site, downstream and further downstream of the immersion site and also from the temporary immersion sites as indicated in the Sketch map (Fig. 9).





The water samples were analysed for the physico-chemical parameters as recommended by Central Pollution Control Board (CPCB) for such studies, such as pH, Electrical Conductivity (EC), Turbidity, Dissolved Oxygen (DO), Biochemical Oxygen Demand (BOD), Chemical Oxygen Demand (COD), chloride, alkalinity, total hardness, calcium, magnesium and hexavalent chromium. Heavy metals like Nickel, Copper, Lead, Cadmium, Zinc and Iron could not be analysed because of non-functioning of Atomic absorption spectrometer presently.

Water quality results are presented in following pages as mentioned below in Table-3.

**Table-3 Water Quality Assessment conducted during Durga Puja**

| Name of ULB                       | River                     | Monitoring location | Water quality status given in Table No. |
|-----------------------------------|---------------------------|---------------------|---|
| Cuttack Municipal Corporation     | Kathajodi                 | Devighat            | Table-4                                 |
| Bhubaneswar Municipal Corporation | Kuakhai                   | Hansapal            | Table-5                                 |
|                                   |                           | Palasuni            | Table-6                                 |
|                                   | Daya                      | Tankapani           | Table- 7                                |
| Lingipur                          |                           | Table- 8            |   |
| Rourkela Municipal Corporation    | Brahmani                  | Rourkela            | Table-9                                 |
| Puri Municipality                 | Mangala                   | Puri                | Table-10                                |
| Sambalpur Municipal Corporation   | Temporary Immersion Ponds | Sambalpur           | Table- 11                               |
| Berhampur Municipal Corporation   | Temporary Immersion Ponds | Berhampur           | Table-12                                |

From the water quality data, it has been observed that

- pH of river water during the study period remained well within the tolerance limit of 6.5-8.5.
- Dissolved Oxygen content in the rivers always remained above 4.0 mg/L which conform to Class C river quality.
- There is no significant change in Electrical conductivity in river water quality in Pre-, During and Post-phases of monitoring.

- BOD values of river monitoring station also remained within the tolerance limit of 3.0 mg/L specified for Class C river throughout the study period.
- Alkalinity, Hardness content, chloride content, remained well within the acceptable limits of drinking water specification.
- Variations in total suspended solid content are mostly due to the occurrence of rain.
- As idols were not directly immersed in river bodies, rather immersed in temporary immersion ponds created on the bank of the rivers and after immersion period also, water from the ponds were not allowed to flow into the rivers, **no impact of idol immersion on the water quality of the rivers has been observed in this study.**

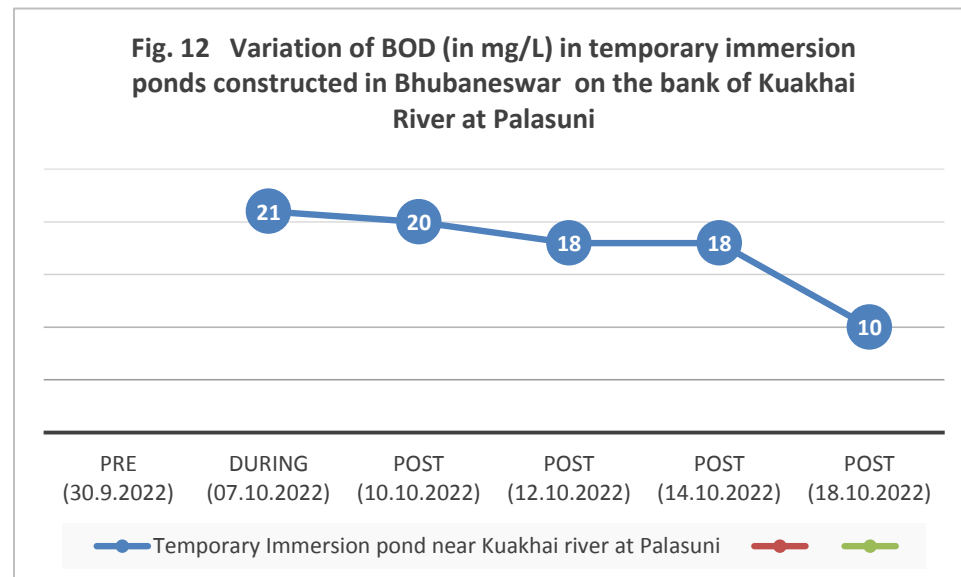
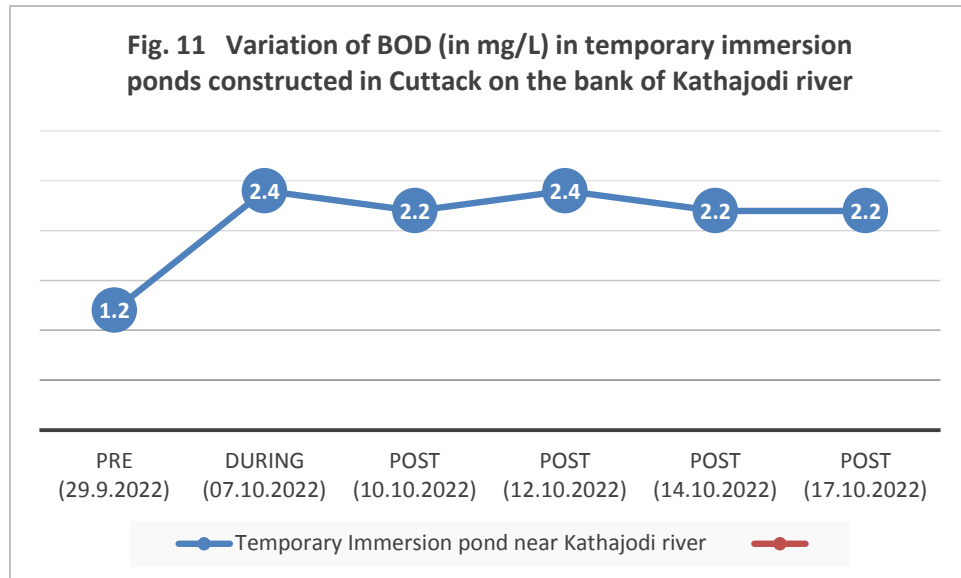


Fig. 10 Temporary idol immersion pond and River side by side after removal of immersion left overs from the pond

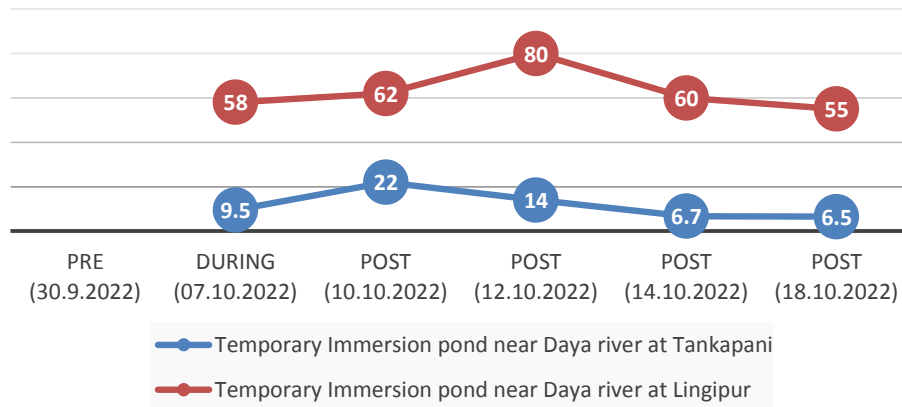
- Variation in BOD values in temporary immersion ponds in different municipal areas are shown in Figures 11-17. As seen in the Figures, where the municipal authorities has taken stringent action to remove the immersion left overs from the temporary immersion pond, the BOD values remained within the tolerance

limit. Partly removal of immersion left overs from the ponds has shown decreasing trend of BOD values with time.

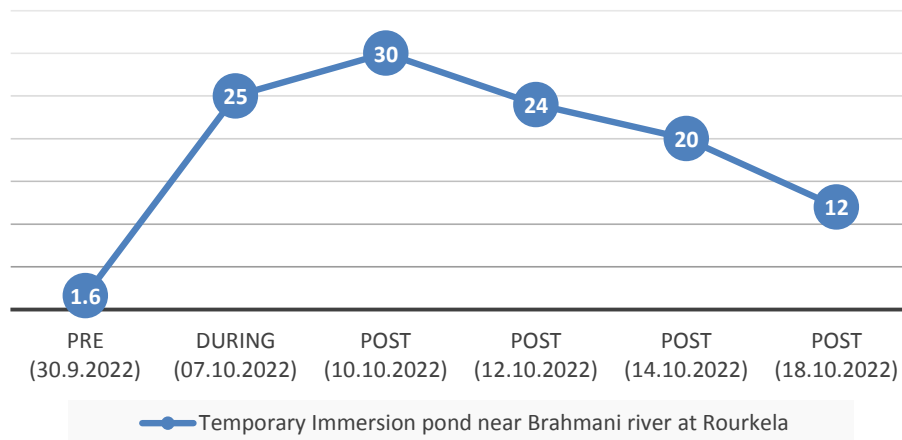
- The BOD values in some ponds though have increased during immersion period, but significantly reduced over the days after immersion period.
- The high values of BOD in post-phase monitoring at some places indicate the lapse in removal of immersion left-overs from the ponds.

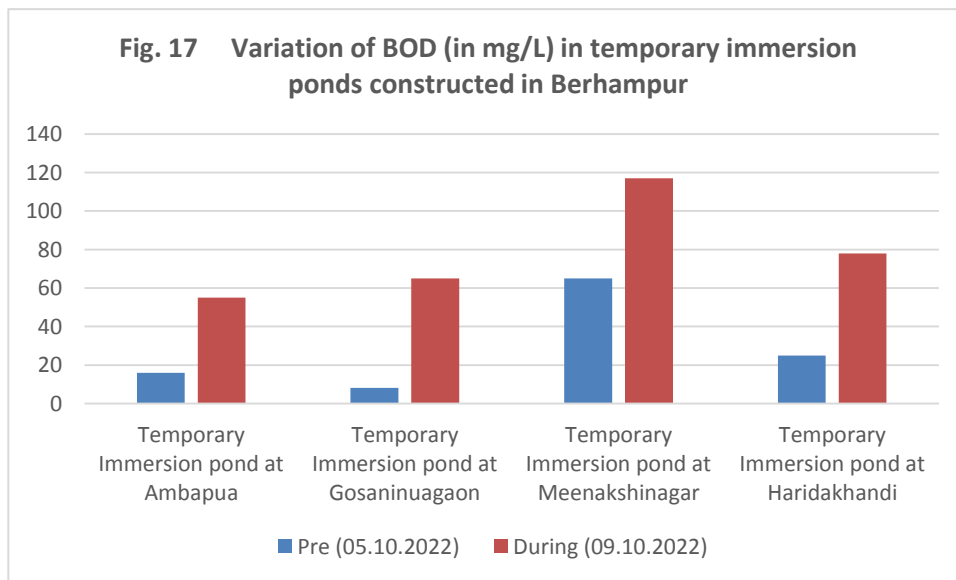
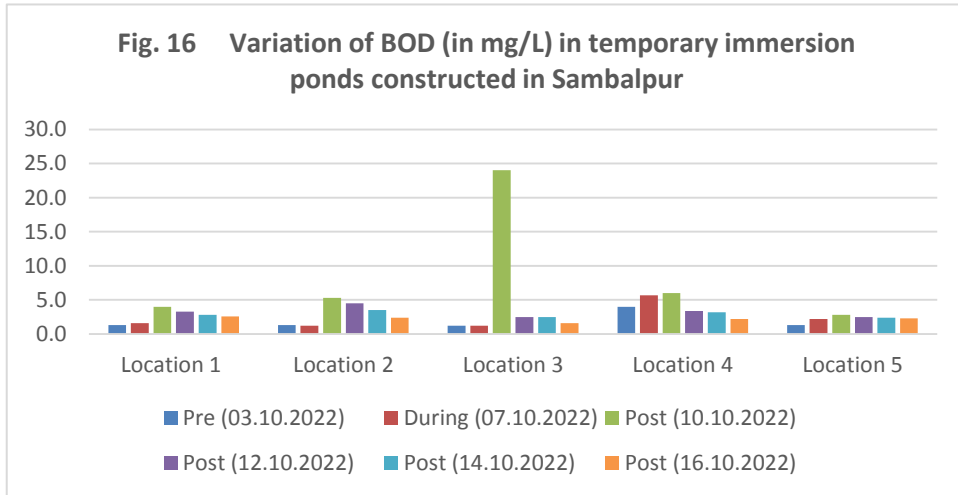
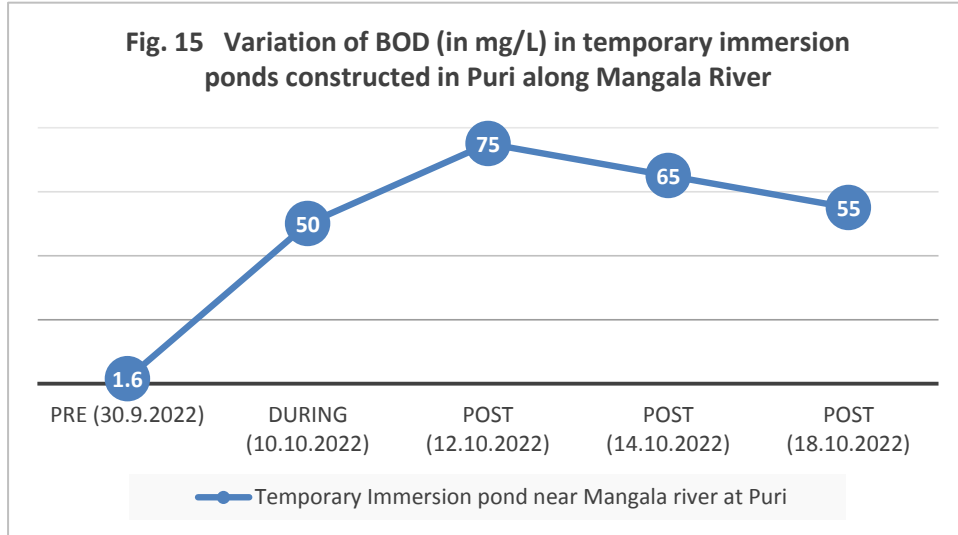


**Fig. 13** Variation of BOD (in mg/L) in temporary immersion ponds constructed in Bhubaneswar on the bank of Daya River



**Fig. 14** Variation of BOD (in mg/L) in temporary immersion ponds constructed in Rourkela on the bank of Brahmani River







- In Berhmapur municipality, all idols were immersed in four numbers of temporary idol immersion ponds constructed within the municipality area and removed immediately. The immersion ponds were filled with water from nearby pond. BOD values in these ponds after immersion are found to be increased in comparison to the corresponding pre-values. After removal of immersion left overs, water of these ponds were treated with alum and bleaching powder and then evacuated out.
- **To summarize, because of the preventive measures taken by the district administration not to allow the water of idol immersion ponds to flow into the river, water quality of the river at the downstream stations in during-immersion and Post-immersion periods mostly remained well within the tolerance limits of the designated use.**
- From the study, it may be concluded that all the parameters specified for the study remained within the tolerance limit for designated class of the river i.e. Class-C (Drinking water source with conventional treatment followed by disinfection) and meet the drinking water specification with respect to all measured parameters except turbidity. **Immersion of idols in the temporary immersion ponds has minimized the probability of contamination of the main course of river water.**
- However, removal of immersion left overs from the immersion ponds within the prescribed 24 hours is equally important to maintain the aesthetic values of the location, to prevent the over accumulation of the garbage in the area and spread of foul odour in the locality, (Fig. 18)



Fig. 18 Immersed left overs in the temporary immersion ponds



Fig. 19 Water quality monitoring in rivers



**Table- 4 Impact of idol immersion during Durga Puja on water quality of Kathajodi river at Cuttack**

| Location*   | pH       | EC,<br>µS/cm | Turb,<br>NTU | TSS,<br>mg/L | DO,<br>mg/L | BOD,<br>mg/L | COD,<br>mg/L | Cl <sup>-</sup> ,<br>mg/L | Alk. as<br>CaCO <sub>3</sub> ,<br>mg/L | TH as<br>CaCO <sub>3</sub> ,<br>mg/L | Ca,<br>mg/L | Mg,<br>mg/L | Cr <sup>+6</sup> ,<br>mg/L |
|---|----------|--------------|--------------|--------------|-------------|--------------|--------------|---------------------------|--|--------------------------------------|-------------|-------------|----------------------------|
| <b>Pre-Idol Immersion Monitoring ( Date of Sampling : 29.9.2022)</b>      |          |              |              |              |             |              |              |                           |  |                                      |             |             |                            |
| Location-1  | 7.1      | 194          | 21           | 24           | 8.3         | 1.2          | 12.0         | 16.0                      | 80                                     | 88                                   | 21.22       | 8.75        | 0.003                      |
| Location-2  | 7.1      | 196          | 30           | 41           | 7.9         | 1.6          | 16.0         | 14.0                      | 80                                     | 76                                   | 17.96       | 7.78        | 0.005                      |
| Location-3  | 7.2      | 193          | 25           | 40           | 8.4         | 1.4          | 7.9          | 18.0                      | 80                                     | 84                                   | 26.12       | 4.86        | 0.006                      |
| Location-4  | 7.3      | 195          | 32           | 44           | 8.1         | 1.2          | 7.9          | 16.0                      | 80                                     | 76                                   | 22.86       | 4.86        | 0.003                      |
| <b>During -Idol Immersion Monitoring ( Date of Sampling : 07.10.2022)</b> |          |              |              |              |             |              |              |                           |  |                                      |             |             |                            |
| Location-1  | 7.3      | 199          | 27           | 48           | 7.4         | 1.4          | 7.8          | 10.0                      | 84                                     | 88                                   | 19.59       | 9.73        | 0.005                      |
| Location-2  | 7.4      | 202          | 33           | 56           | 7.4         | 1.8          | 12.0         | 12.0                      | 80                                     | 76                                   | 22.86       | 4.86        | 0.008                      |
| Location-3  | 7.3      | 200          | 40           | 61           | 7.1         | 1.8          | 12.0         | 14.0                      | 88                                     | 80                                   | 21.22       | 6.81        | 0.006                      |
| Location-4  | 7.4      | 248          | 90           | 110          | 7.1         | 2.4          | 16.0         | 18.0                      | 84                                     | 96                                   | 21.22       | 10.70       | 0.013                      |
| <b>Post -Idol Immersion Monitoring ( Date of Sampling : 10.10.2022)</b>   |          |              |              |              |             |              |              |                           |  |                                      |             |             |                            |
| Location-1  | 7.4      | 207          | 25           | 37           | 8.4         | 1.2          | 7.8          | 12.0                      | 88                                     | 88                                   | 21.22       | 8.75        | 0.003                      |
| Location-2  | 7.5      | 203          | 28           | 48           | 7.5         | 1.8          | 12.0         | 12.0                      | 92                                     | 92                                   | 19.59       | 10.70       | 0.005                      |
| Location-3  | 7.7      | 210          | 20           | 40           | 7.4         | 1.4          | 7.8          | 10.0                      | 92                                     | 84                                   | 27.75       | 3.89        | 0.006                      |
| Location-4  | 7.8      | 232          | 40           | 69           | 7.6         | 2.2          | 12.0         | 14.0                      | 88                                     | 92                                   | 27.75       | 5.84        | 0.008                      |
| <b>Post -Idol Immersion Monitoring ( Date of Sampling : 12.10.2022)</b>   |          |              |              |              |             |              |              |                           |  |                                      |             |             |                            |
| Location-1  | 7.3      | 222          | 16           | 31           | 7.8         | 1.2          | 7.8          | 12.0                      | 96                                     | 88                                   | 19.59       | 9.73        | <0.002                     |
| Location-2  | 7.3      | 241          | 20           | 45           | 8.0         | 1.8          | 12.0         | 12.0                      | 88                                     | 88                                   | 21.22       | 8.75        | 0.003                      |
| Location-3  | 7.2      | 223          | 23           | 25           | 8.3         | 1.6          | 12.0         | 12.0                      | 88                                     | 96                                   | 26.12       | 7.78        | <0.002                     |
| Location-4  | 7.4      | 244          | 15           | 24           | 7.4         | 2.4          | 12.0         | 12.0                      | 84                                     | 96                                   | 21.22       | 10.70       | 0.003                      |
| <b>Post -Idol Immersion Monitoring ( Date of Sampling : 14.10.2022)</b>   |          |              |              |              |             |              |              |                           |  |                                      |             |             |                            |
| Location-1  | 7.6      | 200          | 25           | 34           | 7.4         | 1.2          | 7.7          | 12.0                      | 88                                     | 92                                   | 21.22       | 9.73        | 0.003                      |
| Location-2  | 7.3      | 221          | 22           | 54           | 7.5         | 1.6          | 12.0         | 12.0                      | 92                                     | 88                                   | 27.75       | 4.86        | 0.005                      |
| Location-3  | 7.7      | 235          | 24           | 29           | 7.7         | 1.2          | 12.0         | 12.0                      | 96                                     | 80                                   | 24.49       | 4.86        | <0.002                     |
| Location-4  | 7.7      | 266          | 10           | 17           | 6.7         | 2.2          | 19.0         | 16.0                      | 84                                     | 92                                   | 27.75       | 5.84        | 0.005                      |
| <b>Post -Idol Immersion Monitoring ( Date of Sampling : 17.10.2022)</b>   |          |              |              |              |             |              |              |                           |  |                                      |             |             |                            |
| Location 1  | 7.5      | 194          | 50           | 95           | 7.7         | 1.2          | 7.7          | 14.0                      | 88                                     | 80                                   | 21.22       | 6.81        | 0.003                      |
| Location 2  | 7.2      | 215          | 40           | 63           | 8.7         | 1.8          | 12.0         | 16.0                      | 96                                     | 92                                   | 19.59       | 10.70       | 0.005                      |
| Location 3  | 7.5      | 222          | 38           | 65           | 7.8         | 1.8          | 12.0         | 12.0                      | 92                                     | 88                                   | 24.49       | 6.81        | 0.005                      |
| Location 4  | 7.3      | 230          | 34           | 51           | 8.0         | 2.2          | 16.0         | 16.0                      | 100                                    | 88                                   | 26.12       | 5.84        | 0.005                      |
| Tolerance limits for Class-C inland surface waters (IS : 2296-1982)       |          |              |              |              |             |              |              |                           |  |                                      |             |             |                            |
| Tolerance limit   | 6.5-8.5  | --           | --           | --           | 4.0, min    | 3.0, max     | --           | --                        | --                                     | --                                   | --          | --          | 0.05                       |
| Drinking water specification (IS : 10500 : 2012) and amendments thereof   |          |              |              |              |             |              |              |                           |  |                                      |             |             |                            |
| Acceptable limit  | 6.5-8.5  | -            | 1.0          | -            | -           | -            | -            | 250                       | 200                                    | 200                                  | 75          | 30          | -                          |
| Permissible limit   | No relax | -            | 5.0          | -            | -           | -            | -            | 1000                      | 600                                    | 600                                  | 200         | 100         | -                          |

Location-1 : U/s of immersion site (100m up)

Location-2 : D/s of idol Immersion site (20 m down from temporary site)

Location-3 : FD/s of idol immersion site at Khan nagar

Location 4 : Temporary idol immersion site on the bank of the river at Devigada



**Table- 5 Impact of idol immersion during Durga Puja on water quality of Kuakhai River at Bhubaneswar (Near Hansapal)**

| Location*   | pH            | EC, $\mu\text{S/cm}$ | Turb, NTU | TSS, mg/L | DO, mg/L | BOD, mg/L | COD, mg/L | Cl <sup>-</sup> , mg/L | Alk. as CaCO <sub>3</sub> , mg/L | TH as CaCO <sub>3</sub> , mg/L | Ca, mg/L | Mg, mg/L | Cr <sup>+6</sup> , mg/L |
|---|---------------|----------------------|-----------|-----------|----------|-----------|-----------|------------------------|----------------------------------|--------------------------------|----------|----------|-------------------------|
| <b>Pre-Idol Immersion Monitoring ( Date of Sampling : 30.9.2022)</b>      |               |                      |           |           |          |           |           |                        |                                  |                                |          |          |                         |
| Location-1  | 6.7           | 171                  | 19        | 34        | 7.7      | 1.4       | 7.8       | 16.0                   | 72                               | 80                             | 27.75    | 2.92     | 0.003                   |
| Location-2  | 6.8           | 183                  | 20        | 36        | 7.1      | 1.9       | 12.0      | 14.0                   | 72                               | 84                             | 22.86    | 6.81     | 0.005                   |
| Location-3  | 7.1           | 178                  | 7.1       | 27        | 7.3      | 1.6       | 7.8       | 14.0                   | 80                               | 88                             | 24.49    | 6.81     | 0.003                   |
| Location-4  | Not Monitored |                      |           |           |          |           |           |                        |                                  |                                |          |          |                         |
| <b>During -Idol Immersion Monitoring ( Date of Sampling : 07.10.2022)</b> |               |                      |           |           |          |           |           |                        |                                  |                                |          |          |                         |
| Location-1  | 6.9           | 190                  | 45        | 83        | 6.8      | 1.8       | 12.0      | 14.0                   | 80                               | 88                             | 24.49    | 6.81     | 0.003                   |
| Location-2  | 7.3           | 189                  | 65        | 144       | 6.9      | 2.2       | 16.0      | 12.0                   | 80                               | 88                             | 21.22    | 8.75     | 0.005                   |
| Location-3  | 7.3           | 187                  | 65        | 102       | 7.2      | 1.8       | 12.0      | 10.0                   | 76                               | 80                             | 19.59    | 7.78     | 0.005                   |
| Location-4  | 6.9           | 519                  | 27        | 74        | 0.6      | 42.0      | 118.0     | 46.0                   | 144                              | 112                            | 24.49    | 12.65    | 0.005                   |
| <b>Post -Idol Immersion Monitoring ( Date of Sampling : 10.10.2022)</b>   |               |                      |           |           |          |           |           |                        |                                  |                                |          |          |                         |
| Location-1  | 7.2           | 220                  | 33        | 47        | 7.2      | 1.2       | 7.8       | 12.0                   | 80                               | 84                             | 24.49    | 5.84     | 0.003                   |
| Location-2  | 7.4           | 196                  | 38        | 59        | 7.6      | 2.0       | 7.8       | 14.0                   | 92                               | 88                             | 22.86    | 7.78     | 0.005                   |
| Location-3  | 7.4           | 194                  | 40        | 67        | 7.6      | 1.4       | 7.8       | 16.0                   | 84                               | 84                             | 27.75    | 3.89     | 0.005                   |
| Location-4  | Not Monitored |                      |           |           |          |           |           |                        |                                  |                                |          |          |                         |
| <b>Post -Idol Immersion Monitoring ( Date of Sampling : 12.10.2022)</b>   |               |                      |           |           |          |           |           |                        |                                  |                                |          |          |                         |
| Location-1  | 7.3           | 195                  | 15        | 22        | 6.4      | 1.3       | 16.0      | 16.0                   | 76                               | 72                             | 24.49    | 2.92     | <0.002                  |
| Location-2  | 7.4           | 212                  | 20        | 46        | 8.1      | 2.0       | 7.8       | 14.0                   | 80                               | 80                             | 24.49    | 4.86     | <0.002                  |
| Location-3  | 7.5           | 209                  | 37        | 58        | 8.3      | 1.3       | 7.8       | 10.0                   | 88                               | 84                             | 22.86    | 6.81     | 0.003                   |
| Location-4  |               |                      |           |           |          |           |           |                        |                                  |                                |          |          |                         |
| <b>Post -Idol Immersion Monitoring ( Date of Sampling : 14.10.2022)</b>   |               |                      |           |           |          |           |           |                        |                                  |                                |          |          |                         |
| Location-1  | 7.2           | 188                  | 21        | 28        | 6.4      | 1.4       | 15.0      | 18.0                   | 84                               | 80                             | 29.39    | 1.95     | 0.003                   |
| Location-2  | 7.3           | 206                  | 22        | 39        | 8.7      | 1.8       | 7.7       | 22.0                   | 84                               | 88                             | 22.86    | 7.78     | 0.005                   |
| Location-3  | 7.4           | 207                  | 14        | 51        | 7.9      | 1.4       | 7.7       | 18.0                   | 88                               | 92                             | 27.75    | 5.84     | 0.003                   |
| Location-4  | Not Monitored |                      |           |           |          |           |           |                        |                                  |                                |          |          |                         |
| <b>Post -Idol Immersion Monitoring ( Date of Sampling : 18.10.2022)</b>   |               |                      |           |           |          |           |           |                        |                                  |                                |          |          |                         |
| Location 1  | 7.1           | 186                  | 16        | 37        | 6.8      | 1.4       | 12.0      | 16.0                   | 84                               | 96                             | 21.22    | 10.70    | 0.003                   |
| Location 2  | 7.1           | 208                  | 38        | 62        | 7.4      | 1.6       | 12.0      | 12.0                   | 72                               | 80                             | 22.86    | 5.84     | 0.005                   |
| Location 3  | 7.2           | 199                  | 32        | 59        | 7.2      | 1.6       | 12.0      | 14.0                   | 80                               | 76                             | 17.96    | 7.78     | 0.005                   |
| Location 4  | Not Monitored |                      |           |           |          |           |           |                        |                                  |                                |          |          |                         |
| Tolerance limits for Class-C inland surface waters (IS : 2296-1982)       |               |                      |           |           |          |           |           |                        |                                  |                                |          |          |                         |
| Tolerance limit   | 6.5-8.5       | --                   | --        | --        | 4.0, min | 3.0, max  | --        | --                     | --                               | --                             | --       | --       | 0.05                    |
| Drinking water specification (IS : 10500 : 2012) and amendments thereof   |               |                      |           |           |          |           |           |                        |                                  |                                |          |          |                         |
| Acceptable limit  | 6.5-8.5       | -                    | 1.0       | -         | -        | -         | -         | 250                    | 200                              | 200                            | 75       | 30       | -                       |
| Permissible limit   | No relax      | -                    | 5.0       | -         | -        | -         | -         | 1000                   | 600                              | 600                            | 200      | 100      | -                       |

Location-1 : U/s of immersion site (100m up)

Location-2 : D/s of idol Immersion site (70 m down from temporary site)

Location-3 : FD/s of idol immersion site

Location 4 : Temporary idol immersion site on the bank of the river at Hanapal



**Table- 6 Impact of idol immersion during Durga Puja on water quality of Kuakhai River at Bhubaneswar (Near Palasuni)**

| Location*   | pH            | EC, $\mu$ S/cm | Turb, NTU | TSS, mg/L | DO, mg/L | BOD, mg/L | COD, mg/L | Cl <sup>-</sup> , mg/L | Alk. as CaCO <sub>3</sub> , mg/L | TH as CaCO <sub>3</sub> , mg/L | Ca, mg/L | Mg, mg/L | Cr <sup>+6</sup> , mg/L |
|---|---------------|----------------|-----------|-----------|----------|-----------|-----------|------------------------|----------------------------------|--------------------------------|----------|----------|-------------------------|
| <b>Pre-Idol Immersion Monitoring ( Date of Sampling : 30.9.2022)</b>      |               |                |           |           |          |           |           |                        |                                  |                                |          |          |                         |
| Location-1  | 7.1           | 199            | 7.1       | 32        | 6.9      | 1.6       | 12.0      | 18.0                   | 88                               | 72                             | 29.39    | 0.00     | <0.002                  |
| Location-2  | 7.2           | 207            | 8.2       | 37        | 6.3      | 1.8       | 16.0      | 20.0                   | 76                               | 80                             | 21.22    | 6.81     | <0.002                  |
| Location-3  | 7.3           | 190            | 6.8       | 42        | 6.8      | 1.8       | 16.0      | 20.0                   | 76                               | 76                             | 21.22    | 5.84     | <0.002                  |
| Location-4  | Not Monitored |                |           |           |          |           |           |                        |                                  |                                |          |          |                         |
| <b>During -Idol Immersion Monitoring ( Date of Sampling : 07.10.2022)</b> |               |                |           |           |          |           |           |                        |                                  |                                |          |          |                         |
| Location-1  | 7.2           | 192            | 9.6       | 16        | 6.5      | 1.8       | 12.0      | 16.0                   | 60                               | 76                             | 24.49    | 3.89     | <0.002                  |
| Location-2  | 7.1           | 204            | 24        | 49        | 6.6      | 2.2       | 16.0      | 10.0                   | 64                               | 76                             | 17.96    | 7.78     | <0.002                  |
| Location-3  | 7.2           | 185            | 33        | 62        | 6.6      | 2.4       | 16.0      | 16.0                   | 68                               | 68                             | 17.96    | 5.84     | <0.002                  |
| Location-4  | 6.9           | 391            | 50        | 86        | 1.3      | 21.0      | 88.0      | 32.0                   | 160                              | 168                            | 47.35    | 12.65    | 0.002                   |
| <b>Post -Idol Immersion Monitoring ( Date of Sampling : 10.10.2022)</b>   |               |                |           |           |          |           |           |                        |                                  |                                |          |          |                         |
| Location-1  | 7.2           | 204            | 17        | 39        | 6.7      | 1.4       | 7.8       | 16.0                   | 72                               | 76                             | 17.96    | 7.78     | <0.002                  |
| Location-2  | 7.3           | 214            | 19        | 48        | 6.4      | 1.8       | 12.0      | 16.0                   | 76                               | 72                             | 21.22    | 4.86     | <0.002                  |
| Location-3  | 7.3           | 209            | 16        | 22        | 6.8      | 1.8       | 12.0      | 14.0                   | 76                               | 84                             | 29.39    | 2.92     | 0.003                   |
| Location-4  | 7.1           | 413            | 18        | 34        | 1.4      | 20.0      | 59.0      | 36.0                   | 180                              | 156                            | 40.82    | 13.62    | 0.002                   |
| <b>Post -Idol Immersion Monitoring ( Date of Sampling : 12.10.2022)</b>   |               |                |           |           |          |           |           |                        |                                  |                                |          |          |                         |
| Location-1  | 7.3           | 201            | 9.5       | 27        | 6.0      | 1.2       | 7.8       | 18.0                   | 76                               | 76                             | 17.96    | 7.78     | <0.002                  |
| Location-2  | 7.3           | 224            | 18        | 31        | 5.8      | 1.8       | 12.0      | 12.0                   | 80                               | 80                             | 21.22    | 6.81     | <0.002                  |
| Location-3  | 7.4           | 208            | 14        | 23        | 5.7      | 1.8       | 12.0      | 18.0                   | 84                               | 80                             | 21.22    | 6.81     | 0.003                   |
| Location-4  | 6.9           | 458            | 16        | 32        | 1.8      | 18.0      | 50.0      | 32.0                   | 164                              | 136                            | 40.82    | 8.75     | 0.008                   |
| <b>Post -Idol Immersion Monitoring ( Date of Sampling : 14.10.2022)</b>   |               |                |           |           |          |           |           |                        |                                  |                                |          |          |                         |
| Location-1  | 7.2           | 210            | 15        | 24        | 6.6      | 1.4       | 12.0      | 16.0                   | 84                               | 84                             | 24.49    | 5.84     | 0.003                   |
| Location-2  | 7.4           | 212            | 36        | 55        | 7.0      | 1.8       | 19.0      | 12.0                   | 80                               | 84                             | 19.59    | 8.75     | 0.002                   |
| Location-3  | 7.3           | 208            | 18        | 22        | 6.9      | 1.6       | 19.0      | 14.0                   | 76                               | 96                             | 31.02    | 4.86     | 0.005                   |
| Location-4  | 7.1           | 463            | 22        | 51        | 2.1      | 10.0      | 29.0      | 32.0                   | 188                              | 148                            | 40.82    | 11.67    | 0.008                   |
| <b>Post -Idol Immersion Monitoring ( Date of Sampling : 18.10.2022)</b>   |               |                |           |           |          |           |           |                        |                                  |                                |          |          |                         |
| Location 1  | 7.3           | 196            | 45        | 58        | 6.3      | 1.4       | 12.0      | 16.0                   | 76                               | 72                             | 24.49    | 2.92     | 0.003                   |
| Location 2  | 7.3           | 205            | 38        | 62        | 6.2      | 1.6       | 12.0      | 36.0                   | 76                               | 84                             | 21.22    | 7.78     | 0.003                   |
| Location 3  | 7.4           | 201            | 26        | 54        | 5.8      | 1.8       | 15.0      | 12.0                   | 80                               | 76                             | 16.33    | 8.75     | 0.005                   |
| Location 4  | 6.9           | 509            | 24        | 74        | 2.6      | 8.0       | 20.0      | 34.0                   | 220                              | 184                            | 40.82    | 20.43    | 0.003                   |
| Tolerance limits for Class-C inland surface waters (IS : 2296-1982)       |               |                |           |           |          |           |           |                        |                                  |                                |          |          |                         |
| Tolerance limit   | 6.5-8.5       | --             | --        | --        | 4.0, min | 3.0, max  | --        | --                     | --                               | --                             | --       | --       | 0.05                    |
| Drinking water specification (IS : 10500 : 2012) and amendments thereof   |               |                |           |           |          |           |           |                        |                                  |                                |          |          |                         |
| Acceptable limit  | 6.5-8.5       | -              | 1.0       | -         | -        | -         | -         | 250                    | 200                              | 200                            | 75       | 30       | -                       |
| Permissible limit   | No relax      | -              | 5.0       | -         | -        | -         | -         | 1000                   | 600                              | 600                            | 200      | 100      | -                       |

Location-1 : U/s of immersion site (100m up)

Location-2 : D/s of idol Immersion site (70 m down from temporary site)

Location-3 : FD/s of idol immersion site

Location 4 : Temporary idol immersion site on the bank of the river at Hanapal



**Table- 7 Impact of idol immersion during Durga Puja on water quality of Daya River at Bhubaneswar (Near Tankapani)**

| Location*   | pH       | EC, $\mu\text{S/cm}$ | Turb, NTU | TSS, mg/L | DO, mg/L | BOD, mg/L | COD, mg/L | Cl <sup>-</sup> , mg/L | Alk. as CaCO <sub>3</sub> , mg/L | TH as CaCO <sub>3</sub> , mg/L | Ca, mg/L | Mg, mg/L | Cr <sup>+6</sup> , mg/L |
|---|----------|----------------------|-----------|-----------|----------|-----------|-----------|------------------------|----------------------------------|--------------------------------|----------|----------|-------------------------|
| <b>Pre-Idol Immersion Monitoring ( Date of Sampling : 30.9.2022)</b>      |          |                      |           |           |          |           |           |                        |                                  |                                |          |          |                         |
| Location-1  | 7.5      | 188                  | 10        | 17        | 6.9      | 1.2       | 7.8       | 16.0                   | 80                               | 76                             | 19.59    | 6.81     | 0.003                   |
| Location-2  | 7.5      | 181                  | 12        | 53        | 7.4      | 1.4       | 7.8       | 18.0                   | 84                               | 72                             | 24.49    | 2.92     | 0.005                   |
| Location-3  | 7.7      | 180                  | 12        | 60        | 7.8      | 1.4       | 12.0      | 14.0                   | 84                               | 76                             | 24.49    | 3.89     | 0.003                   |
| Location-4  |          |                      |           |           |          |           |           |                        |                                  |                                |          |          |                         |
| <b>During -Idol Immersion Monitoring ( Date of Sampling : 07.10.2022)</b> |          |                      |           |           |          |           |           |                        |                                  |                                |          |          |                         |
| Location-1  | 7.4      | 190                  | 19        | 39        | 6.7      | 1.2       | 7.8       | 14.0                   | 80                               | 80                             | 17.96    | 8.75     | 0.002                   |
| Location-2  | 7.5      | 198                  | 26        | 43        | 6.7      | 1.4       | 7.8       | 16.0                   | 84                               | 80                             | 21.22    | 6.81     | 0.003                   |
| Location-3  | 7.5      | 192                  | 14        | 29        | 7.0      | 1.2       | 7.8       | 12.0                   | 76                               | 76                             | 21.22    | 5.84     | 0.003                   |
| Location-4  | 7.3      | 216                  | 60        | 85        | 1.4      | 9.5       | 24.0      | 16.0                   | 80                               | 80                             | 27.75    | 2.92     | 0.005                   |
| <b>Post -Idol Immersion Monitoring ( Date of Sampling : 10.10.2022)</b>   |          |                      |           |           |          |           |           |                        |                                  |                                |          |          |                         |
| Location-1  | 7.4      | 184                  | 20        | 25        | 6.9      | 1.2       | 7.8       | 14.0                   | 84                               | 80                             | 19.59    | 7.78     | <0.002                  |
| Location-2  | 7.5      | 188                  | 23        | 35        | 6.6      | 1.6       | 12.0      | 12.0                   | 80                               | 76                             | 17.96    | 7.78     | 0.005                   |
| Location-3  | 7.5      | 190                  | 28        | 65        | 7.4      | 1.4       | 12.0      | 18.0                   | 76                               | 88                             | 19.59    | 9.73     | 0.003                   |
| Location-4  | 7.4      | 229                  | 24        | 52        | 0.8      | 22.0      | 59.0      | 14.0                   | 96                               | 92                             | 27.75    | 5.84     | 0.006                   |
| <b>Post -Idol Immersion Monitoring ( Date of Sampling : 12.10.2022)</b>   |          |                      |           |           |          |           |           |                        |                                  |                                |          |          |                         |
| Location-1  | 7.2      | 184                  | 15        | 22        | 7.0      | 1.3       | 7.8       | 16.0                   | 84                               | 76                             | 17.96    | 7.78     | 0.003                   |
| Location-2  | 7.6      | 188                  | 16        | 39        | 6.8      | 1.2       | 7.8       | 10.0                   | 88                               | 80                             | 19.59    | 7.78     | <0.002                  |
| Location-3  | 7.6      | 201                  | 20        | 31        | 8.0      | 1.2       | 7.8       | 12.0                   | 84                               | 84                             | 19.59    | 8.75     | <0.002                  |
| Location-4  | 7.4      | 243                  | 50        | 75        | 2.2      | 14.0      | 48.0      | 18.0                   | 100                              | 96                             | 32.65    | 3.89     | 0.006                   |
| <b>Post -Idol Immersion Monitoring ( Date of Sampling : 14.10.2022)</b>   |          |                      |           |           |          |           |           |                        |                                  |                                |          |          |                         |
| Location-1  | 7.4      | 196                  | 11        | 25        | 8.6      | 1.6       | 7.7       | 12.0                   | 80                               | 72                             | 19.59    | 5.84     | 0.003                   |
| Location-2  | 7.5      | 205                  | 45        | 183       | 8.2      | 1.6       | 7.7       | 12.0                   | 92                               | 84                             | 24.49    | 5.84     | 0.003                   |
| Location-3  | 7.6      | 213                  | 29        | 49        | 8.2      | 1.4       | 7.7       | 12.0                   | 80                               | 96                             | 22.86    | 9.73     | 0.005                   |
| Location-4  | 7.5      | 215                  | 60        | 98        | 3.0      | 6.7       | 38.0      | 16.0                   | 88                               | 84                             | 17.96    | 9.73     | 0.006                   |
| <b>Post -Idol Immersion Monitoring ( Date of Sampling : 18.10.2022)</b>   |          |                      |           |           |          |           |           |                        |                                  |                                |          |          |                         |
| Location 1  | 7.4      | 187                  | 36        | 345       | 7.0      | 1.2       | 12.0      | 12.0                   | 76                               | 76                             | 17.96    | 7.78     | 0.003                   |
| Location 2  | 7.4      | 196                  | 45        | 412       | 6.5      | 2.0       | 23.0      | 20.0                   | 84                               | 80                             | 24.49    | 4.86     | 0.005                   |
| Location 3  | 7.6      | 192                  | 25        | 41        | 7.9      | 1.6       | 7.7       | 12.0                   | 76                               | 72                             | 26.12    | 1.95     | 0.003                   |
| Location 4  | 7.2      | 264                  | 40        | 50        | 3.4      | 6.5       | 28.0      | 14.0                   | 108                              | 92                             | 22.86    | 8.75     | 0.005                   |
| Tolerance limits for Class-C inland surface waters (IS : 2296-1982)       |          |                      |           |           |          |           |           |                        |                                  |                                |          |          |                         |
| Tolerance limit   | 6.5-8.5  | --                   | --        | --        | 4.0, min | 3.0, max  | --        | --                     | --                               | --                             | --       | --       | 0.05                    |
| Drinking water specification (IS : 10500 : 2012) and amendments thereof   |          |                      |           |           |          |           |           |                        |                                  |                                |          |          |                         |
| Acceptable limit  | 6.5-8.5  | -                    | 1.0       | -         | -        | -         | -         | 250                    | 200                              | 200                            | 75       | 30       | -                       |
| Permissible limit   | No relax | -                    | 5.0       | -         | -        | -         | -         | 1000                   | 600                              | 600                            | 200      | 100      | -                       |

\* Location-1 : U/s of immersion site  
 Location-2 : D/S of temporary immersion site on river (near idol immersion pond below Daya bridge)  
 Location-3 : FD/s of idol immersion site (100 m away from D/s location)  
 Location 4 : Temporary immersion site



**Table- 8 Impact of idol immersion during Durga Puja on water quality of Daya River at Bhubaneswar (Near Lingipur)**

| Location*   | pH       | EC, $\mu\text{S/cm}$ | Turb, NTU | TSS, mg/L | DO, mg/L | BOD, mg/L | COD, mg/L | Cl <sup>-</sup> , mg/L | Alk. as CaCO <sub>3</sub> , mg/L | TH as CaCO <sub>3</sub> , mg/L | Ca, mg/L | Mg, mg/L | Cr <sup>+6</sup> , mg/L |
|---|----------|----------------------|-----------|-----------|----------|-----------|-----------|------------------------|----------------------------------|--------------------------------|----------|----------|-------------------------|
| <b>Pre-Idol Immersion Monitoring ( Date of Sampling : 30.9.2022)</b>      |          |                      |           |           |          |           |           |                        |                                  |                                |          |          |                         |
| Location-1  | 7.1      | 174                  | 13        | 37        | 8.0      | 1.2       | 7.8       | 14.0                   | 80                               | 76                             | 17.96    | 7.78     | <0.002                  |
| Location-2  | 7.2      | 179                  | 13        | 39        | 7.5      | 1.2       | 7.8       | 16.0                   | 80                               | 80                             | 22.86    | 5.84     | <0.002                  |
| Location-3  | 7.3      | 181                  | 14        | 41        | 7.6      | 1.4       | 7.8       | 14.0                   | 76                               | 84                             | 31.02    | 1.95     | <0.002                  |
| Location-4  |          |                      |           |           |          |           |           |                        |                                  |                                |          |          |                         |
| <b>During -Idol Immersion Monitoring ( Date of Sampling : 07.10.2022)</b> |          |                      |           |           |          |           |           |                        |                                  |                                |          |          |                         |
| Location-1  | 6.9      | 173                  | 11        | 22        | 7.1      | 1.2       | 7.8       | 12.0                   | 80                               | 72                             | 24.49    | 2.92     | 0.003                   |
| Location-2  | 7.1      | 186                  | 18        | 35        | 7.4      | 1.6       | 12.0      | 12.0                   | 80                               | 80                             | 21.22    | 6.81     | 0.005                   |
| Location-3  | 7.3      | 187                  | 12        | 21        | 6.9      | 1.4       | 7.8       | 12.0                   | 76                               | 88                             | 22.86    | 7.78     | 0.003                   |
| Location-4  | 7.1      | 408                  | 40        | 312       | <0.3     | 58.0      | 118.0     | 43.0                   | 132                              | 136                            | 40.82    | 8.75     | 0.006                   |
| <b>Post -Idol Immersion Monitoring ( Date of Sampling : 10.10.2022)</b>   |          |                      |           |           |          |           |           |                        |                                  |                                |          |          |                         |
| Location-1  | 7.1      | 181                  | 16        | 43        | 7.5      | 1.2       | 7.8       | 16.0                   | 80                               | 80                             | 21.22    | 6.81     | 0.003                   |
| Location-2  | 7.3      | 188                  | 13        | 37        | 7.0      | 1.6       | 12.0      | 16.0                   | 80                               | 84                             | 24.49    | 5.84     | 0.003                   |
| Location-3  | 7.3      | 195                  | 12        | 21        | 7.2      | 1.4       | 7.8       | 14.0                   | 84                               | 80                             | 24.49    | 4.86     | 0.003                   |
| Location-4  | 7.4      | 562                  | 50        | 348       | <0.3     | 62.0      | 157.0     | 70.0                   | 192                              | 176                            | 40.82    | 18.48    | 0.013                   |
| <b>Post -Idol Immersion Monitoring ( Date of Sampling : 12.10.2022)</b>   |          |                      |           |           |          |           |           |                        |                                  |                                |          |          |                         |
| Location-1  | 7.1      | 194                  | 14        | 26        | 8.7      | 1.2       | 7.8       | 12.0                   | 84                               | 80                             | 27.75    | 2.92     | <0.002                  |
| Location-2  | 7.2      | 208                  | 17        | 41        | 7.6      | 1.2       | 7.8       | 12.0                   | 84                               | 80                             | 22.86    | 5.84     | 0.002                   |
| Location-3  | 7.4      | 220                  | 21        | 26        | 7.7      | 1.2       | 7.8       | 18.0                   | 84                               | 80                             | 22.86    | 5.84     | 0.005                   |
| Location-4  | 7.1      | 608                  | 39        | 172       | <0.3     | 80.0      | 175.0     | 80.0                   | 216                              | 192                            | 40.82    | 22.37    | 0.006                   |
| <b>Post -Idol Immersion Monitoring ( Date of Sampling : 14.10.2022)</b>   |          |                      |           |           |          |           |           |                        |                                  |                                |          |          |                         |
| Location-1  | 7.3      | 198                  | 25        | 66        | 8.1      | 1.2       | 7.7       | 12.0                   | 76                               | 76                             | 21.22    | 5.84     | 0.002                   |
| Location-2  | 7.4      | 214                  | 17        | 36        | 7.5      | 1.8       | 16.0      | 18.0                   | 84                               | 84                             | 21.22    | 7.78     | 0.003                   |
| Location-3  | 7.4      | 201                  | 14        | 24        | 7.1      | 1.2       | 7.7       | 10.0                   | 80                               | 88                             | 27.75    | 4.86     | 0.003                   |
| Location-4  | 7.2      | 640                  |           | 135       | <0.3     | 60.0      | 135.0     | 70.0                   | 152                              | 188                            | 52.24    | 14.59    | 0.005                   |
| <b>Post -Idol Immersion Monitoring ( Date of Sampling : 18.10.2022)</b>   |          |                      |           |           |          |           |           |                        |                                  |                                |          |          |                         |
| Location 1  | 7.3      | 200                  | 20        | 46        | 7.6      | 6.8       | 31.0      | 14.0                   | 88                               | 76                             | 24.49    | 3.89     | 0.003                   |
| Location 2  | 7.4      | 211                  | 22        | 24        | 6.4      | 2.7       | 15.0      | 16.0                   | 92                               | 80                             | 21.22    | 6.81     | 0.003                   |
| Location 3  | 7.5      | 195                  | 26        | 36        | 5.6      | 1.2       | 7.7       | 16.0                   | 84                               | 84                             | 29.39    | 2.92     | 0.003                   |
| Location 4  | 6.8      | 616                  | 25        | 88        | <0.3     | 55.0      | 119.0     | 60.0                   | 124                              | 176                            | 42.45    | 17.51    | 0.003                   |
| Tolerance limits for Class-C inland surface waters (IS : 2296-1982)       |          |                      |           |           |          |           |           |                        |                                  |                                |          |          |                         |
| Tolerance limit   | 6.5-8.5  | --                   | --        | --        | 4.0, min | 3.0, max  | --        | --                     | --                               | --                             | --       | --       | 0.05                    |
| Drinking water specification (IS : 10500 : 2012) and amendments thereof   |          |                      |           |           |          |           |           |                        |                                  |                                |          |          |                         |
| Acceptable limit  | 6.5-8.5  | -                    | 1.0       | -         | -        | -         | -         | 250                    | 200                              | 200                            | 75       | 30       | -                       |
| Permissible limit   | No relax | -                    | 5.0       | -         | -        | -         | -         | 1000                   | 600                              | 600                            | 200      | 100      | -                       |

\* Location-1 : U/s of immersion site  
 Location-2 : D/S of temporary immersion site on river (near idol immersion pond below Daya bridge)  
 Location-3 : FD/s of idol immersion site (100 m away from D/s location)  
 Location 4 : Temporary immersion site



**Table- 9 Impact of idol immersion during Durga Puja on water quality of Brahmani River at Rourkela**

| Location*   | pH       | EC, $\mu\text{S/cm}$ | Turb, NTU | TSS, mg/L | DO, mg/L | BOD, mg/L | COD, mg/L | Cl <sup>-</sup> , mg/L | Alk. as CaCO <sub>3</sub> , mg/L | TH as CaCO <sub>3</sub> , mg/L | Ca, mg/L | Mg, mg/L | Cr <sup>+6</sup> , mg/L |
|---|----------|----------------------|-----------|-----------|----------|-----------|-----------|------------------------|----------------------------------|--------------------------------|----------|----------|-------------------------|
| <b>Pre-Idol Immersion Monitoring ( Date of Sampling : 05.10.2022)</b>     |          |                      |           |           |          |           |           |                        |                                  |                                |          |          |                         |
| Location-1  | 7.2      | 148                  | 70        | 95        | 6.5      | 1.4       | 12        | 12.0                   | 68                               | 80                             | 26.12    | 3.89     | 0.003                   |
| Location-2  | 7.2      | 235                  | 35        | 72        | 6.4      | 1.6       | 23        | 30.0                   | 116                              | 108                            | 29.39    | 8.75     | 0.005                   |
| Location-3  | 7.3      | 176                  | 55        | 110       | 6.9      | 1.6       | 23        | 32.0                   | 116                              | 112                            | 31.02    | 8.75     | 0.006                   |
| Location-4  | 7.1      | 278                  | 16        | 25        | 6.2      | 1.6       | 27        | 36.0                   | 160                              | 148                            | 40.82    | 11.67    | 0.005                   |
| <b>During -Idol Immersion Monitoring ( Date of Sampling : 08.10.2022)</b> |          |                      |           |           |          |           |           |                        |                                  |                                |          |          |                         |
| Location-1  | 7.2      | 152                  | 50        | 76        | 6.7      | 1.2       | 7.8       | 14.0                   | 76                               | 88                             | 29.39    | 3.89     | 0.003                   |
| Location-2  | 7.1      | 264                  | 39        | 58        | 6.4      | 1.8       | 12        | 26                     | 100                              | 112                            | 37.55    | 4.86     | 0.003                   |
| Location-3  | 7.3      | 184                  | 50        | 85        | 6.8      | 1.8       | 7.8       | 14.0                   | 88                               | 104                            | 31.02    | 6.81     | 0.003                   |
| Location-4  | 7.1      | 478                  | 25        | 46        | <0.3     | 25        | 97        | 52.0                   | 180                              | 172                            | 40.82    | 17.51    | 0.008                   |
| <b>Post -Idol Immersion Monitoring ( Date of Sampling : 11.10. 2022)</b>  |          |                      |           |           |          |           |           |                        |                                  |                                |          |          |                         |
| Location-1  | 7.3      | 168                  | 90        | 120       | 5.9      | 1.3       | 7.8       | 12.0                   | 72                               | 88                             | 24.49    | 6.81     | 0.003                   |
| Location-2  | 7.3      | 209                  | 130       | 264       | 7.7      | 2         | 27        | 22.0                   | 64                               | 100                            | 31.02    | 5.84     | 0.005                   |
| Location-3  | 7.4      | 172                  | 29        | 38        | 6.1      | 1.6       | 12        | 12.0                   | 64                               | 124                            | 35.92    | 8.75     | 0.005                   |
| Location-4  | 7.2      | 520                  | 30        | 68        | <0.3     | 30        | 97        | 48                     | 192                              | 212                            | 62.04    | 14.59    | 0.013                   |
| <b>Post -Idol Immersion Monitoring ( Date of Sampling : 13.10.2022)</b>   |          |                      |           |           |          |           |           |                        |                                  |                                |          |          |                         |
| Location-1  | 7.5      | 158                  | 21        | 27        | 7.9      | 1.1       | 7.6       | 14.0                   | 100                              | 80                             | 21.22    | 6.81     | <0.002                  |
| Location-2  | 7.5      | 196                  | 17        | 25        | 8.5      | 1.1       | 7.6       | 18.0                   | 92                               | 88                             | 21.22    | 8.75     | 0.003                   |
| Location-3  | 7.8      | 152                  | 24        | 65        | 6.9      | 1.1       | 7.6       | 18.0                   | 76                               | 60                             | 16.33    | 4.86     | <0.002                  |
| Location-4  | 7.8      | 540                  | 70        | 174       | <0.3     | 24        | 114       | 56.0                   | 144                              | 180                            | 40.82    | 19.46    | 0.005                   |
| <b>Post -Idol Immersion Monitoring ( Date of Sampling : 15.10.2022)</b>   |          |                      |           |           |          |           |           |                        |                                  |                                |          |          |                         |
| Location-1  | 7.7      | 154                  | 35        | 73        | 7.3      | 1.2       | 11        | 14.0                   | 72                               | 60                             | 16.33    | 4.86     | <0.002                  |
| Location-2  | 7.5      | 192                  | 40        | 87        | 6.9      | 1.2       | 11        | 16.0                   | 80                               | 76                             | 19.59    | 6.81     | 0.003                   |
| Location-3  | 7.6      | 146                  | 40        | 76        | 7.3      | 1.3       | 11        | 18.0                   | 88                               | 80                             | 21.22    | 6.81     | 0.003                   |
| Location-4  | 7.3      | 530                  | 65        | 164       | <0.3     | 20        | 76        | 58.0                   | 92                               | 100                            | 24.49    | 9.73     | 0.008                   |
| <b>Post -Idol Immersion Monitoring ( Date of Sampling : 17.10.2022)</b>   |          |                      |           |           |          |           |           |                        |                                  |                                |          |          |                         |
| Location 1  | 7.6      | 157                  | 7.8       | 19        | 8.9      | 1.1       | 7.6       | 22.0                   | 112                              | 92                             | 29.39    | 4.86     | <0.002                  |
| Location 2  | 7.3      | 193                  | 36        | 46        | 6.8      | 1.4       | 11        | 24.0                   | 120                              | 112                            | 37.55    | 4.86     | 0.003                   |
| Location 3  | 7.4      | 141                  | 23        | 40        | 7.4      | 1.2       | 7.6       | 26.0                   | 120                              | 144                            | 40.82    | 10.70    | 0.003                   |
| Location 4  | 7.2      | 542                  | 55        | 117       | 0.5      | 12        | 38        | 109.9                  | 168                              | 180                            | 40.82    | 19.46    | 0.005                   |
| Tolerance limits for Class-C inland surface waters (IS : 2296-1982)       |          |                      |           |           |          |           |           |                        |                                  |                                |          |          |                         |
| Tolerance limit   | 6.5-8.5  | --                   | --        | --        | 4.0, min | 3.0, max  | --        | --                     | --                               | --                             | --       | --       | 0.05                    |
| Drinking water specification (IS : 10500 : 2012) and amendments thereof   |          |                      |           |           |          |           |           |                        |                                  |                                |          |          |                         |
| Acceptable limit  | 6.5-8.5  | -                    | 1.0       | -         | -        | -         | -         | 250                    | 200                              | 200                            | 75       | 30       | -                       |
| Permissible limit   | No relax | -                    | 5.0       | -         | -        | -         | -         | 1000                   | 600                              | 600                            | 200      | 100      | -                       |

- \* Location-1 : U/s of immersion site  
 Location-2 : D/s of temporary immersion site on bank of river Brahmani  
 Location-3 : FD/s of idol immersion site  
 Location 4 : Temporary immersion site





**Table- 10 Impact of idol immersion during Durga Puja on water quality of Mangala river in Puri Municipality**

| Location*  | pH       | EC, $\mu\text{S/cm}$ | Turb, NTU | TSS, mg/L | DO, mg/L | BOD, mg/L | COD, mg/L | Cl <sup>-</sup> , mg/L | Alk. as CaCO <sub>3</sub> , mg/L | TH as CaCO <sub>3</sub> , mg/L | Ca, mg/L | Mg, mg/L | Cr <sup>+6</sup> , mg/L |
|--|----------|----------------------|-----------|-----------|----------|-----------|-----------|------------------------|----------------------------------|--------------------------------|----------|----------|-------------------------|
| <b>Pre-Idol Immersion Monitoring ( Date of Sampling : 30.09. 2022)</b>     |          |                      |           |           |          |           |           |                        |                                  |                                |          |          |                         |
| Location-1   | 7.3      | 187                  | 9.1       | 35        | 6.5      | 1.4       | 12.0      | 18.0                   | 84                               | 76                             | 22.86    | 4.86     | <0.002                  |
| Location-2   | 7.4      | 189                  | 11        | 39        | 6.4      | 1.4       | 12.0      | 18.0                   | 80                               | 76                             | 24.49    | 3.89     | <0.002                  |
| Location-3   | 7.4      | 200                  | 7.9       | 20        | 6.0      | 1.6       | 12.0      | 22.0                   | 80                               | 84                             | 29.39    | 2.92     | 0.008                   |
| Location-4   |          |                      |           |           |          |           |           |                        |                                  |                                |          |          |                         |
| <b>During -Idol Immersion Monitoring ( Date of Sampling : 10.10. 2022)</b> |          |                      |           |           |          |           |           |                        |                                  |                                |          |          |                         |
| Location-1   | 7.2      | 195                  | 14        | 35        | 6.7      | 1.6       | 7.8       | 18.0                   | 80                               | 80                             | 22.86    | 5.84     | <0.002                  |
| Location-2   | 7.2      | 203                  | 28        | 41        | 6.4      | 1.8       | 16.0      | 20.0                   | 80                               | 72                             | 24.49    | 2.92     | <0.002                  |
| Location-3   | 7.2      | 212                  | 15        | 38        | 6.2      | 1.6       | 12.0      | 18.0                   | 80                               | 76                             | 16.33    | 8.75     | 0.005                   |
| Location-4   | 7.3      | 438                  | 30        | 50        | <0.3     | 50.0      | 118.0     | 62.0                   | 128                              | 112                            | 40.82    | 2.92     | 0.006                   |
| <b>Post -Idol Immersion Monitoring ( Date of Sampling : 12.10.2022)</b>    |          |                      |           |           |          |           |           |                        |                                  |                                |          |          |                         |
| Location-1   | 7.3      | 204                  | 25        | 36        | 7.1      | 1.2       | 7.8       | 12.0                   | 80                               | 80                             | 19.59    | 7.78     | <0.002                  |
| Location-2   | 7.3      | 214                  | 24        | 40        | 5.9      | 1.4       | 7.8       | 22.0                   | 88                               | 72                             | 22.86    | 3.89     | 0.003                   |
| Location-3   | 7.4      | 216                  | 17        | 23        | 6.9      | 1.6       | 12.0      | 20.0                   | 152                              | 88                             | 21.22    | 8.75     | 0.005                   |
| Location-4   | 7.1      | 535                  | 50        | 172       | <0.3     | 75.0      | 155.0     | 80.0                   | 132                              | 136                            | 40.82    | 8.75     | 0.006                   |
| <b>Post -Idol Immersion Monitoring ( Date of Sampling : 14.10.2022)</b>    |          |                      |           |           |          |           |           |                        |                                  |                                |          |          |                         |
| Location-1   | 7.2      | 205                  | 13        | 27        | 6.5      | 1.2       | 7.7       | 18.0                   | 80                               | 84                             | 24.49    | 5.84     | <0.002                  |
| Location-2   | 7.4      | 213                  | 19        | 37        | 6.1      | 1.6       | 12.0      | 18.0                   | 84                               | 88                             | 24.49    | 6.81     | <0.002                  |
| Location-3   | 7.5      | 224                  | 20        | 41        | 10.0     | 1.4       | 7.7       | 16.0                   | 84                               | 80                             | 21.22    | 6.81     | 0.006                   |
| Location-4   | 7.2      | 480                  | 30        | 62        | <0.3     | 65.0      | 147.0     | 70.0                   | 140                              | 128                            | 40.82    | 6.81     | 0.008                   |
| <b>Post -Idol Immersion Monitoring ( Date of Sampling : 18.10.2022)</b>    |          |                      |           |           |          |           |           |                        |                                  |                                |          |          |                         |
| Location 1   | 7.2      | 204                  | 11        | 21        | 7.1      | 1.2       | 7.7       | 18.0                   | 84                               | 76                             | 21.22    | 5.84     | <0.002                  |
| Location 2   | 7.3      | 216                  | 30        | 63        | 6.1      | 1.6       | 15.0      | 24.0                   | 84                               | 76                             | 24.49    | 3.89     | 0.002                   |
| Location 3   | 7.3      | 223                  | 37        | 71        | 6.8      | 1.4       | 12.0      | 28.0                   | 88                               | 84                             | 24.49    | 5.84     | 0.003                   |
| Location 4   | 7.4      | 499                  | 45        | 74        | <0.3     | 55.0      | 135.0     | 70.0                   | 160                              | 132                            | 40.82    | 7.78     | 0.008                   |
| Tolerance limits for Class-C inland surface waters (IS : 2296-1982)        |          |                      |           |           |          |           |           |                        |                                  |                                |          |          |                         |
| Tolerance limit  | 6.5-8.5  | --                   | --        | --        | 4.0, min | 3.0, max  | --        | --                     | --                               | --                             | --       | --       | 0.05                    |
| Drinking water specification (IS : 10500 : 2012) and amendments thereof    |          |                      |           |           |          |           |           |                        |                                  |                                |          |          |                         |
| Acceptable limit   | 6.5-8.5  | -                    | 1.0       | -         | -        | -         | -         | 250                    | 200                              | 200                            | 75       | 30       | -                       |
| Permissible limit  | No relax | -                    | 5.0       | -         | -        | -         | -         | 1000                   | 600                              | 600                            | 200      | 100      | -                       |

- \* Location-1 : U/s of immersion site
- Location-2 : D/s of temporary immersion site on bank of river Brahmani
- Location-3 : FD/s of idol immersion site
- Location 4 : Temporary immersion site

**Table- 11 Impact of idol immersion during Durga Puja on water quality of Idol Immersion ponds in Sambalpur Municipal Corporation**

| Date of Monitoring   | pH  | EC, $\mu\text{S}/\text{cm}$ | Turb, NTU | TSS, mg/L | DO, mg/L | BOD, mg/L | COD, mg/L | Cl <sup>-</sup> , mg/L | Alk. as CaCO <sub>3</sub> , mg/L | TH as CaCO <sub>3</sub> , mg/L | Ca, mg/L | Mg, mg/L | Cr <sup>+6</sup> , mg/L |
|--|-----|-----------------------------|-----------|-----------|----------|-----------|-----------|------------------------|----------------------------------|--------------------------------|----------|----------|-------------------------|
| <b>Artificial immersion tank inside abandoned pond near Choudhary Chowk nursery, Putibandh, W.No.-37</b> |     |                             |           |           |          |           |           |                        |                                  |                                |          |          |                         |
| 03.10.2022 (Pre)   | 6.8 | 279                         | 3.8       | < 10      | 5.2      | 1.3       | 7.8       | 16.0                   | 104                              | 108                            | 35.92    | 4.86     | <0.002                  |
| 07.10.2022 (During)  | 7.2 | 281                         | 4.5       | 22        | 4.6      | 1.6       | 19.0      | 30.0                   | 108                              | 104                            | 22.86    | 11.67    | <0.002                  |
| 10.10.2022 (Post)  | 7.2 | 283                         | 3.6       | 16        | 4.4      | 4.0       | 23.0      | 38.0                   | 104                              | 112                            | 27.75    | 10.70    | <0.002                  |
| 12.10.2022 (Post)  | 7.1 | 292                         | 2.8       | 10        | 4.6      | 3.3       | 23.0      | 24.0                   | 92                               | 96                             | 27.75    | 6.81     | <0.002                  |
| 14.10.2022 (Post)  | 7.3 | 275                         | 2.9       | 13        | 4.8      | 2.8       | 19.0      | 20.0                   | 100                              | 112                            | 37.55    | 4.86     | <0.002                  |
| 16.10.2022 (Post)  | 7.2 | 276                         | 2.9       | 11        | 5.0      | 2.6       | 19.0      | 24.0                   | 92                               | 88                             | 24.49    | 6.81     | <0.002                  |
| <b>Artificial immersion tank inside abandoned pond at Durgapali, Sambalpur. W.No.-15</b>                 |     |                             |           |           |          |           |           |                        |                                  |                                |          |          |                         |
| 03.10.2022 (Pre)   | 6.9 | 283                         | 1.6       | < 10      | 5.6      | 1.3       | 7.8       | 14.0                   | 108                              | 96                             | 27.75    | 6.81     | <0.002                  |
| 07.10.2022 (During)  | 7.1 | 286                         | 1.7       | < 10      | 5.2      | 1.2       | 7.8       | 20.0                   | 100                              | 100                            | 24.49    | 9.73     | <0.002                  |
| 10.10.2022 (Post)  | 7.1 | 299                         | 2.8       | 11        | 4.8      | 5.3       | 23.0      | 32.0                   | 120                              | 96                             | 22.86    | 9.73     | <0.002                  |
| 12.10.2022 (Post)  | 6.9 | 290                         | 2.1       | < 10      | 4.8      | 4.5       | 46.0      | 30.0                   | 120                              | 100                            | 24.49    | 9.73     | 0.002                   |
| 14.10.2022 (Post)  | 7.1 | 285                         | 1.6       | < 10      | 5.0      | 3.5       | 34.0      | 26.0                   | 112                              | 84                             | 29.39    | 2.92     | <0.002                  |
| 16.10.2022 (Post)  | 6.9 | 283                         | 4.7       | 14        | 4.8      | 2.4       | 19.0      | 24.0                   | 100                              | 100                            | 24.49    | 9.73     | 0.003                   |
| <b>Artificial immersion tank inside abandoned pond at Gulunda, Burla. W.No.-3</b>                        |     |                             |           |           |          |           |           |                        |                                  |                                |          |          |                         |
| 03.10.2022 (Pre)   | 6.9 | 226                         | 3.3       | < 10      | 5.4      | 1.2       | 7.8       | 18.0                   | 76                               | 84                             | 26.12    | 4.86     | <0.002                  |
| 07.10.2022 (During)  | 6.9 | 235                         | 3.8       | 12        | 5.0      | 1.2       | 7.8       | 36.0                   | 76                               | 76                             | 24.49    | 3.89     | <0.002                  |
| 10.10.2022 (Post)  | 7.2 | 249                         | 4.8       | 10        | 4.0      | 24.0      | 47.0      | 38.0                   | 104                              | 92                             | 29.39    | 4.86     | 0.003                   |
| 12.10.2022 (Post)  | 7.1 | 245                         | 4.3       | 12        | 4.0      | 2.5       | 12.0      | 10.0                   | 80                               | 76                             | 17.96    | 7.78     | <0.002                  |
| 14.10.2022 (Post)  | 7.2 | 236                         | 4.8       | 13        | 4.0      | 2.5       | 12.0      | 20.0                   | 80                               | 76                             | 19.59    | 6.81     | <0.002                  |
| 16.10.2022 (Post)  | 7.1 | 234                         | 1.8       | 19        | 4.2      | 1.6       | 7.8       | 26.0                   | 68                               | 64                             | 21.22    | 2.92     | <0.002                  |
| <b>Artificial immersion tank inside abandoned pond near Hirakud PS, W.No.-10</b>                         |     |                             |           |           |          |           |           |                        |                                  |                                |          |          |                         |
| 03.10.2022 (Pre)   | 7.1 | 356                         | 4         | < 10      | 2.0      | 4.0       | 19.0      | 16.0                   | 148                              | 132                            | 40.82    | 7.78     | <0.002                  |
| 07.10.2022 (During)  | 7.1 | 415                         | 3.9       | 16        | 1.8      | 5.7       | 27.0      | 32.0                   | 132                              | 124                            | 37.55    | 7.78     | <0.002                  |
| 10.10.2022 (Post)  | 7.2 | 415                         | 3.4       | < 10      | 1.8      | 6.0       | 39.0      | 30.0                   | 124                              | 144                            | 42.45    | 9.73     | <0.002                  |
| 12.10.2022 (Post)  | 7.1 | 479                         | 4.2       | < 10      | 1.8      | 3.4       | 27.0      | 22.0                   | 168                              | 164                            | 40.82    | 15.56    | 0.003                   |
| 14.10.2022 (Post)  | 7.1 | 463                         | 1.8       | < 10      | 2.0      | 3.2       | 18.0      | 24.0                   | 144                              | 160                            | 40.82    | 14.59    | <0.002                  |



**Impact of Idol Immersion during Durga Puja on Water Quality of Aquatic Bodies-2022**

|   |          |     |     |      |          |          |      |      |     |     |       |      |        |
|---|----------|-----|-----|------|----------|----------|------|------|-----|-----|-------|------|--------|
| 16.10.2022<br>(Post)  | 7.2      | 466 | 1.7 | < 10 | 1.8      | 2.2      | 12.0 | 16.0 | 124 | 124 | 34.29 | 9.73 | <0.002 |
| <b>Artificial immersion tank inside abandoned pond near PC bridge, Burla, W.No.-7</b> |          |     |     |      |          |          |      |      |     |     |       |      |        |
| 03.10.2022<br>(Pre)   | 7.1      | 210 | 4.6 | < 10 | 4.4      | 1.3      | 7.8  | 26.0 | 72  | 80  | 17.96 | 8.75 | <0.002 |
| 07.10.2022<br>(During)  | 6.9      | 230 | 7.9 | 19   | 3.6      | 2.2      | 12.0 | 26.0 | 60  | 76  | 17.96 | 7.78 | <0.002 |
| 10.10.2022<br>(Post)  | 7.3      | 250 | 13  | 39   | 3.4      | 2.8      | 23.0 | 30.0 | 88  | 92  | 29.39 | 4.86 | 0.003  |
| 12.10.2022<br>(Post)  | 7.1      | 235 | 8.8 | 34   | 3.6      | 2.5      | 18.0 | 22.0 | 72  | 84  | 26.12 | 4.86 | 0.005  |
| 14.10.2022<br>(Post)  | 7.3      | 217 | 5.2 | 21   | 3.8      | 2.4      | 18.0 | 22.0 | 88  | 84  | 24.49 | 5.84 | 0.005  |
| 16.10.2022<br>(Post)  | 7.1      | 213 | 2.8 | 11   | 4.0      | 2.3      | 18.0 | 22.0 | 88  | 80  | 24.49 | 4.86 | 0.003  |
| Tolerance limits for Class-C inland surface waters (IS : 2296-1982)                   |          |     |     |      |          |          |      |      |     |     |       |      |        |
| Tolerance limit   | 6.5-8.5  | --  | --  | --   | 4.0, min | 3.0, max | --   | --   | --  | --  | --    | --   | 0.05   |
| Drinking water specification (IS : 10500 : 2012) and amendments thereof               |          |     |     |      |          |          |      |      |     |     |       |      |        |
| Acceptable limit  | 6.5-8.5  | -   | 1.0 | -    | -        | -        | -    | 250  | 200 | 200 | 75    | 30   | -      |
| Permissible limit   | No relax | -   | 5.0 | -    | -        | -        | -    | 1000 | 600 | 600 | 200   | 100  | -      |



**Table- 12 Impact of idol immersion during Durga Puja on water quality of Idol Immersion ponds in Berhampur Municipal Corporation**

| Date of Monitoring  | pH       | EC, $\mu\text{S}/\text{cm}$ | Turb, NTU | TSS, mg/L | DO, mg/L | BOD, mg/L | COD, mg/L | Cl <sup>-</sup> , mg/L | Alk. as CaCO <sub>3</sub> , mg/L | TH as CaCO <sub>3</sub> , mg/L | Ca, mg/L | Mg, mg/L | Cr <sup>+6</sup> , mg/L |
|---|----------|-----------------------------|-----------|-----------|----------|-----------|-----------|------------------------|----------------------------------|--------------------------------|----------|----------|-------------------------|
| <b>Temporary immersion pond at Ambapua</b>                              |          |                             |           |           |          |           |           |                        |                                  |                                |          |          |                         |
| 05.10.2022 (Pre)  | 6.9      | 641                         | 8         | 19        | NA       | 16        | 55        | 30.0                   | 172                              | 216                            | 48.98    | 23.35    | 0.005                   |
| 09.10.2022 (During)   | 7.2      | 733                         | 52        | 192       | NA       | 55        | 117       | 80.0                   | 224                              | 244                            | 65.31    | 20.43    | 0.008                   |
| <b>Temporary immersion pond at Gosaninuagaon</b>                        |          |                             |           |           |          |           |           |                        |                                  |                                |          |          |                         |
| 05.10.2022 (Pre)  | 7.2      | 528                         | 6.6       | 19        | NA       | 8.2       | 35        | 60.0                   | 128                              | 128                            | 39.18    | 7.78     | 0.003                   |
| 09.10.2022 (During)   | 7.1      | 629                         | 50        | 75        | NA       | 65        | 117       | 109.9                  | 200                              | 146                            | 40.82    | 11.19    | 0.01                    |
| <b>Temporary immersion pond at Meenakshi Nagar</b>                      |          |                             |           |           |          |           |           |                        |                                  |                                |          |          |                         |
| 05.10.2022 (Pre)  | 7.1      | 514                         | 9.7       | 19        | NA       | 1.2       | 12        | 50.0                   | 128                              | 116                            | 37.55    | 5.84     | 0.006                   |
| 09.10.2022 (During)   | 7.1      | 590                         | 45        | 66        | NA       | 95        | 117       | 80.0                   | 192                              | 180                            | 45.71    | 16.54    | 0.006                   |
| <b>Temporary immersion pond at Haridakhandi</b>                         |          |                             |           |           |          |           |           |                        |                                  |                                |          |          |                         |
| 05.10.2022 (Pre)  | 7.1      | 451                         | 11        | 46        | NA       | 9         | 32        | 30.0                   | 124                              | 136                            | 40.82    | 8.75     | 0.003                   |
| 09.10.2022 (During)   | 7.2      | 538                         | 24        | 86        | NA       | 25        | 78        | 80.0                   | 124                              | 144                            | 40.82    | 10.70    | 0.003                   |
| Tolerance limits for Class-C inland surface waters (IS : 2296-1982)     |          |                             |           |           |          |           |           |                        |                                  |                                |          |          |                         |
| Tolerance limit   | 6.5-8.5  | --                          | --        | --        | 4.0, min | 3.0, max  | --        | --                     | --                               | --                             | --       | --       | 0.05                    |
| Drinking water specification (IS : 10500 : 2012) and amendments thereof |          |                             |           |           |          |           |           |                        |                                  |                                |          |          |                         |
| Acceptable limit  | 6.5-8.5  | -                           | 1.0       | -         | -        | -         | -         | 250                    | 200                              | 200                            | 75       | 30       | -                       |
| Permissible limit   | No relax | -                           | 5.0       | -         | -        | -         | -         | 1000                   | 600                              | 600                            | 200      | 100      | -                       |

\* NA : Not Analysed



## 7. Recommendations

- As the “**Odisha Prevention and Control of Water Pollution (Procedure for Immersion of Idol after Pujas) Rules, 2021**” is effective for whole of the State, the District Administration/ authorities of ULBs should take necessary action for effective implementation of the Rule during all pujas involving immersion of idols.
- The height of the super structure of the idols shall be limited to 40 ft and of the idols shall be limited to 20ft in height ;
- District Administration/ authorities of ULBs may take awareness programme for the idol makers to register themselves with a declaration to make ecofriendly idols.
- District Administration should promote the idol makers/ idol manufactures for making ecofriendly idols.
- District Administration should identify the units manufacturing natural colours and make a coordination between the natural colour manufacturers and idol makers.
- As there will be massive need of natural colours to paint the idols and huge shift in the business of the small idol makers, the State Government should provide incentives to these natural colour manufacturers and idol makers, so that they can change their mind set and opt for painting the idols with natural colours.
- Puja Committee Organisers should use the idols made from natural clay only and colouring of the idols with natural colours.
- As Pujas like Durga Puja, Saraswati Puja, Biswakarma Puja, Khudurukuni Puja are mostly observed in individual scale, promotion of idols made of natural clay and coloured with natural colours play a vital role in controlling of pollution. School children, young mass may be given major thrust for the awareness programs on ill impacts of idol immersion.
- Use of thermocol, single-use plastic materials for decoration purpose, Prasad distribution/ sevans purposes should be prohibited as use of single-use plastic have already been banned in the country.
- Adequate number and size of ponds shall be constructed by the local administration for idol immersion purpose and shall be informed to the Puja Committee Organisers with route map.
- Public and individual house holders, resident welfare associations may be encouraged to immerse their idols in these earmarked ponds.



- Resident welfare associations may construct temporary idol immersion ponds in their premises for such purpose. Immersion left overs from the ponds may be recovered from the ponds and handed over to the municipal authorities for proper disposal. Water of the ponds may be used for gardening purpose.
- Awareness may be created among the individual house holders to immerse the idols and puja left overs in a bucket full of water and later the water may be used for gardening. Or else they may immerse their idols in the designated temporary immersion ponds created for the purpose.
- Municipal authorities shall cooperate the Puja Committee Organisers for removal of the left-over materials of the idol immersions from the immersion sites within 24 hours of immersion and transportation of these debris to the dumpsites.
- Treatment of temporary immersion pond water with lime and discharge of the settled water to main river channel.
- Burning of left-over materials of idol immersion on the banks of river should be prohibited.
- After discharge of water from the temporary immersion ponds, the empty space should be filled with sand.
- Public awareness shall be given more thrust on the ill-impacts of idol immersion and implementation of the Guidelines.
- Public awareness should be created to limit the size of idols and number of idols in a locality in order to decrease the waste load in the form of puja left-overs.

----



## **ANNEXURES**



FAX : 2562822/2560955  
TEL : 2564033/2563294  
EPABX : 2561909/2562847  
E-mail : [paribesh1@ospboard.org](mailto:paribesh1@ospboard.org)  
Website : [www.ospcbboard.org](http://www.ospcbboard.org)

**STATE POLLUTION CONTROL BOARD, ODISHA**

[DEPARTMENT OF FOREST, ENVIRONMENT AND CLIMATE CHANGE, GOVERNMENT OF ODISHA]

Paribesh Bhawan, A/118, Nilakanthanagar, Unit-VIII,

Bhubaneswar – 751 012

No. 3369

VI-SC(LEM)Proj.64 (Vol-II) /21-22

Di. 04.3.2022

To

All Collectors and District Magistrates  
Odisha

Sub : Gazette Notification of "Odisha Prevention and Control of Water Pollution (Procedure for immersion of idols after Pujas) Rules, 2021"

Ref : This office letter No. 16589 dated 29.10.2021

Sir,

In inviting a reference to the above cited letter, this is to inform that the Gazette Notification of "Odisha Prevention and Control of Water Pollution (Procedure for immersion of idols after Pujas) Rules, 2021" vide No. 17937/FE dated 14.10.2021 has been uploaded in the Board's website. The Rules comes into force from the date of publication in the Gazette Notification. The following actions may please be initiated for effective implementation of the said Rule.

- (1) Ensuring use of natural clay and biodegradable materials for manufacture of idols
- (2) Ensuring use of natural dyes/ colours and biodegradable materials for decoration of idols.
- (3) PoP based idols should not be allowed for immersion in water bodies. Such idols should be immersed only in temporary ponds at designated places (to be arranged by the ULBs).
- (4) Instruct Urban Local Bodies (ULBs) to create temporary immersion/ artificial ponds in close proximity of a locality / residential areas for immersion of idols.
- (5) Safety measures to be taken at the banks of the rivers during immersion of idols as detailed in the guidelines.
- (6) As far as possible, encourage immersion of idols in a bucket of water in case of individual houses or residence / within the premises of residence welfare apartments in a temporary / artificial ponds. After immersion, decanted water can be used for gardening purposes.
- (7) To create awareness among the public through daily newspaper/ electronic media/ sky advertisement balloons regarding use of eco-friendly idols during the pujas involving idol immersion, in association with the festival samithis or NGOs.
- (8) Awareness campaign regarding making of eco-friendly idols should be organized at community places, schools/ colleges in association with festival samithis or NGOs.

The Rule may be downloaded using the weblink ( <http://ospboard.org/wp-content/uploads/2022/02/1741-F-E-Idol-Immersion-Rule-by-Odisha.pdf>) for kind information and effective implementation of the Rule.

Contd.. p/2






-2-

Further, you are requested to provide the information regarding manufacturers of eco-friendly natural dyes in the district at an early date.


Action taken for implementation of the Rule may please be communicated to this end .

Yours faithfully,

  
MEMBER SECRETARY

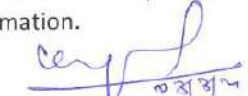
Memo No. 3370 /dt. 04.3.2022

Copy forwarded to the Executive Director, National Mission for Clean Ganga, Department of Water Resources, River Development and Ganga Rejuvenation, Ministry of Jal Shakti, 1<sup>st</sup> Floor, Major Dhyan Chand National Stadium, Indian Gate, New Delhi 110002 ([ed-technical@nmcg.nic.in](mailto:ed-technical@nmcg.nic.in)) for kind information.

  
MEMBER SECRETARY

Memo No. 3371 /dt. 04.3.2022

Copy forwarded to Sri A. Sudhakar, Divisional Head, WQM-I, Central Pollution Control Board, Parivesh Bhawan, East Arjun Nagar, Delhi 110032 ([asudhakar.cpcb@nic.in](mailto:asudhakar.cpcb@nic.in)) for kind information.

  
MEMBER SECRETARY

Memo No. 3372 /dt. 04.3.2022

Copy forwarded to the Zonal Officer, Central Pollution Control Board, Eastern Zonal Office, Block 502, Southend Conclave, 5<sup>th</sup> and 6<sup>th</sup> Floor, 1582, Rajdanga Main Road, Kolkata-700107 (Email : [zokolkata.cpcb@nic.in](mailto:zokolkata.cpcb@nic.in)) for kind information.

  
MEMBER SECRETARY

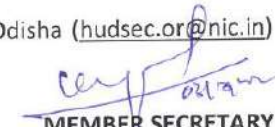
Memo No. 3373 /dt. 04.3.2022

Copy forwarded to the Director, Env.-cum-Spl. Secy. To Government, Forest, Environment and Climate Change Department, Govt. of Odisha ([env1992@gmail.com](mailto:env1992@gmail.com)) for kind information.

  
MEMBER SECRETARY

Memo No. 3374 /dt. 04.3.2022

Copy forwarded to the Principal Secretary, H & UD Department, Govt. of Odisha ([hudsec.or@nic.in](mailto:hudsec.or@nic.in)) for kind information and necessary action.

  
MEMBER SECRETARY

Contd.. p/3



-3-

Memo No. 3375 /dt. 04.3.2022

Copy forwarded to the Principal Secretary, Home Department, Govt. of Odisha ([homsec.od@nic.in](mailto:homsec.od@nic.in)) for kind information and necessary action.

  
MEMBER SECRETARY

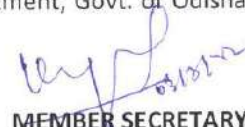
Memo No. 3376 /dt. 04.3.2022

Copy forwarded to the Principal Secretary, Higher Education Department, Govt. of Odisha ([hedsec.od@nic.in](mailto:hedsec.od@nic.in)) for kind information and necessary action.

  
MEMBER SECRETARY

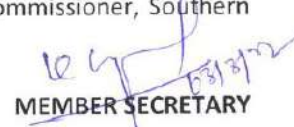
Memo No. 3377 /dt. 04.3.2022

Copy forwarded to the Principal Secretary, School and Mass Education Department, Govt. of Odisha for kind information and necessary action.

  
MEMBER SECRETARY


Memo No. 3378(3) /dt. 04.3.2022

Copy forwarded to the Revenue Divisional Commissioner, Central Division, Cuttack / Revenue Divisional Commissioner, Northern Division, Sambalpur/ Revenue Divisional Commissioner, Southern Division, Berhampur for kind information and necessary action.

  
MEMBER SECRETARY


Memo No. 3379(5) /dt. 04.3.2022

Copy forwarded to the Commissioner, Bhubaneswar Municipal Corporation / Cuttack Municipal Corporation / Rourkela Municipal Corporation / Berhampur Municipal Corporation / Sambalpur Municipal Corporation for kind information and necessary action.

  
MEMBER SECRETARY

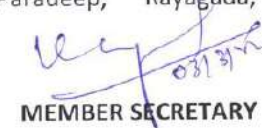
Memo No. 3380(109) /dt. 04.3.2022

Copy forwarded to the Executive Officer of all Municipalities and NACs for kind information and necessary action.

  
MEMBER SECRETARY

Memo No. 3381(13) /dt. 04.3.2022

Copy forwarded to the Regional Offices of State Pollution Control Board, Angul, Balasore, Bhubaneswar, Berhampur, Cuttack, Jharsuguda, Kalinganagar, Keonjhar, Paradeep, Rayagada, Rourkela, Sambalpur and Koraput for information and necessary action.

  
MEMBER SECRETARY



Impact of Idol Immersion during Durga Puja on Water Quality of Aquatic Bodies-2022

9/16/22, 11:38 AM

advtg\_report

Annexure-2

FORM 1
GOVERNMENT OF ODISHA
INFORMATION & PUBLIC RELATIONS DEPARTMENT
NO.ADVT 08012IPR, Bhubaneswar, on date 15-09-2022

To,
The Advertisement Manager

Subject:-Publication of Advertisement Others : 0259

Dear Sir,

In enclosing the above advertisement I am desired to request you to kindly publish the same issue as detailed below of your esteemed daily at the latest by the date mentioned and send your bill in triplicate at the approved rate along with the full voucher copy, within seven days from the date of publication of the advertisement to the Advertiser for payment.

You are also required to send a complementary copy of newspaper containing the advertisement to the advertiser immediately after its publication.

Receipt of the advertisement may kindly be acknowledged and the probable date of insertion of the same in the newspaper may also be intimated to this department.

Yours faithfully
Jt.Dir/Dy.Dir.of I&PR(Advt.)and Dy.Secy to Government

RO No : 08012/11/0259/2223 REF. & DATE : 16859 - 15-SEP-22 ADVT.SPACE 220
IN SQU.CM
AD Type: CLASSIFIED DESIG.: AO
B.W/COL: B & W Address: STATE POLLUTION CONTROL BOARD, BHUBANESWAR, ODISHA
CATEGORY: Others Caption No.: CAD-1831

Table with 10 columns: Sl.NO, NP\_CODE NAME, PUB\_CITY, INS DATE, LAST DATE, INS INST, ADVT\_SPACE, COST. It lists 10 advertisement entries with details like SAMAJ, DHARITRI, PRAGATIVADI, SAKALA, SAMBAD, PRAMEYA and their respective dates and costs.

Copy forward to the AO ; STATE POLLUTION CONTROL BOARD, ; BHUBANESWAR, ODISHA ; null for information with reference to his Letter/Memo No : 16859 Dated:15-SEP-22.He is requested to make payment to the concern News paper on production of bills.

Jt.Dir/Dy.Dir.of I&PR(Advt.)and Dy.Secy to Government

Memo. no 16859
Copy to Guard file

Report generated by NIC as on 9/16/2022 at 11:39:08 AM



9/16/22, 11:38 AM

advtg\_report

**Annexure-3**

**FORM1**  
**GOVERNMENT OF ODISHA**  
**INFORMATION & PUBLIC RELATIONS DEPARTMENT**  
NO.ADVT 08012IPR,Bhubaneswar,on date 15-09-2022

To,  
The Advertisement Manager

Subject:-Publication of Advertisement Others : 0260

Dear Sir,

In enclosing the above advertisement I am desired to request you to kindly publish the same issue as detailed below of your esteemed daily at the latest by the date mentioned and send your bill in triplicate at the approved rate along with the full voucher copy,within seven days from the date of publication of the advertisement to **the Advertiser for payment.**

You are also required to send a complementary copy of newspaper containing the advertisement to the advertiser immediately after its publication.

Receipt of the advertisement may kindly be acknowledged and the probable date of insertion of the same in the newspaper may also be intimated to this department.

Yours faithfully  
Jt.Dir/Dy.Dir.of I&PR(Advt.)and Dy.Secy to Government

|           |                    |               |                   |            |     |
|-----------|--------------------|---------------|-------------------|------------|-----|
| RO No :   | 08012/11/0260/2223 | REF. & DATE : | 16859 - 15-SEP-22 | ADVT.SPACE | 220 |
|           |                    |               |                   | IN SQU.CM  |     |
| AD Type:  | CLASSIFIED         | DESIG.:       | AO                |            |     |
| E.W/COL:  | B & W              | Address:      | STATE POLLUTION   |            |     |
|           |                    |               | CONTROL BOARD,    |            |     |
|           |                    |               | BHUBANESWAR,      |            |     |
|           |                    |               | ODISHA            |            |     |
| CATEGORY: | Others             | Caption No.:  | CAD-1831          |            |     |

| Sl.NO | NP_CODE | NAME               | PUB_CITY    | INS DATE | LAST DATE | INS | INST  | ADVT_SPACE | COST |
|-------|---------|--------------------|-------------|----------|-----------|-----|-------|------------|------|
| 1     | 101003  | STATESMAN          | BHUBANESWAR | 24/09/22 | 24/09/22  | 1   | INNER | 220 SquCm  | 2332 |
| 2     | 101007  | NEW INDIAN EXPRESS | BHUBANESWAR | 20/09/22 | 20/09/22  | 1   | INNER | 220 SquCm  | 2332 |
| 3     | 101007  | NEW INDIAN EXPRESS | BHUBANESWAR | 10/10/22 | 10/10/22  | 2   | INNER | 220 SquCm  | 2332 |
| 4     | 101007  | NEW INDIAN EXPRESS | BHUBANESWAR | 18/10/22 | 18/10/22  | 3   | INNER | 220 SquCm  | 2332 |
| 5     | 101013  | THE TIMES OF INDIA | BHUBANESWAR | 16/09/22 | 16/09/22  | 1   | INNER | 220 SquCm  | 4004 |
| 6     | 101013  | THE TIMES OF INDIA | BHUBANESWAR | 02/10/22 | 02/10/22  | 2   | INNER | 220 SquCm  | 4004 |
| 7     | 101013  | THE TIMES OF INDIA | BHUBANESWAR | 14/10/22 | 14/10/22  | 3   | INNER | 220 SquCm  | 4004 |
| 8     | 101013  | THE TIMES OF INDIA | BHUBANESWAR | 22/10/22 | 22/10/22  | 4   | INNER | 220 SquCm  | 4004 |
| 9     | 101026  | THE PIONEER        | BHUBANESWAR | 28/09/22 | 28/09/22  | 1   | INNER | 220 SquCm  | 3155 |
| 10    | 101042  | ORISSA POST        | BHUBANESWAR | 06/10/22 | 06/10/22  | 1   | INNER | 220 SquCm  | 3155 |

Copy forward to the AO , STATE POLLUTION CONTROL BOARD, , BHUBANESWAR, ODISHA ,



9/16/22, 11:38 AM

advtg\_report

null for information with reference to his Letter/Memo No : 16859 Dated:15-SEP-22.He is requested to make payment to the concern News paper on production of bills.

Jt.Dir/Dy.Dir.of I&PR(Advt.)and Dy.Secy to Government

Memo. no 16859

Copy to Guard file

**Report generated by NIC as on 9/16/2022 at 11:39:27 AM**



FAX : 2562822/2560955  
TEL : 2564033/2563294  
EPABX : 2561909/2562847  
E-mail : [paribesh1@ospboard.org](mailto:paribesh1@ospboard.org)  
Website : [www.ospcboard.org](http://www.ospcboard.org)



**STATE POLLUTION CONTROL BOARD, ODISHA**

[DEPARTMENT OF FOREST, ENVIRONMENT AND CLIMATE CHANGE, GOVERNMENT OF ODISHA]  
Paribesh Bhawan, A/118, Nilakanthanagar, Unit-VIII,  
Bhubaneswar – 751 012

No. 15235

Dt. 24.08.2022

VI-SC(LEM)Proj.64 (Vol II) /22-23

To

All Collectors and District Magistrates  
Odisha

Sub : Effective implementation of the "Odisha Prevention and Control of Water Pollution (Procedure for immersion of idols after Pujas) Rules, 2021"-reg

Ref : (1) This Office letter No. 3369 dated 04.3.2022  
(2) This Office letter No. 10216 dated 10.6.2022

Sir,

In inviting a reference to above cited letters, this is to inform that the Central Pollution Control Board (CPCB) has directed to implement the "Revised Guidelines for Immersion of Idols- May 12, 2020" with effect from 01.01.2021. The guideline posted in Board's website may be downloaded using the weblink [http://ospcboard.org/wp-content/uploads/2020/06/295\\_1589273986\\_mediaphoto24365.pdf](http://ospcboard.org/wp-content/uploads/2020/06/295_1589273986_mediaphoto24365.pdf) for kind information. Further, the State Government of Odisha has framed "Odisha Prevention and Control of Water Pollution (Procedure for immersion of idols after Pujas) Rules, 2021" vide Gazette Notification No. 17937 dated 04.10.2021. Copy of the said Rule may be downloaded from the Board's website (<http://ospcboard.org/wp-content/uploads/2022/02/1741-F-E-Idol-Immersion-Rule-by-Odisha.pdf>). The date of effective of implementation of the Rule was from its date of publication in the Odisha Gazette i.e. 14.10.2021.

In this regard, it has been requested vide above referred letters to take proactive action to create awareness among the idol makers, puja committee organizers and public to use idols made up of natural clay and coloured with eco-friendly natural dyes/ colours, immersion of idols in temporary immersion ponds.

As the pujas involving idols will start from the end of the month of August, 2022, kind action may be taken for strict implementation of the said Rules and submit the action taken report within one month after completion of each Puja.

As the matter is also viewed by the Hon'ble National Green Tribunal in the matter of OA 673 of 2018 (More river stretches are Polluted), timely submission of Action Taken Reports in this regard will be highly appreciated.

Encl : As above

Yours sincerely,

  
MEMBER SECRETARY

Contd..



-2-

Memo No. 15236 /dt. 24.08.2022

Copy forwarded to Sri A. Sudhakar, Divisional Head, WQM-I, Central Pollution Control Board, Parivesh Bhawan, East Arjun Nagar, Delhi 110032 for kind information.

  
MEMBER SECRETARY

Memo No. 15237 /dt. 24.08.2022

Copy forwarded to the Director, Env.-cum-Spl. Secy. To Government, Forest, Environment and Climate Change Department, Govt. of Odisha for kind information and necessary action.

  
MEMBER SECRETARY

Memo No. 15238 /dt. 24.08.2022

Copy forwarded to the Principal Secretary, H & UD Department, Govt. of Odisha for kind information and necessary action.

  
MEMBER SECRETARY

Memo No. 15239(5) /dt. 24.08.2022

Copy forwarded to the Commissioner, Bhubaneswar Municipal Corporation / Cuttack Municipal Corporation / Rourkela Municipal Corporation / Berhampur Municipal Corporation / Sambalpur Municipal Corporation for kind information and necessary action

Encl : As above

  
MEMBER SECRETARY

Memo No. 15240 /dt. 24.08.2022

Copy forwarded All Executive Officer, Municipalities and NACs for kind information and necessary action.

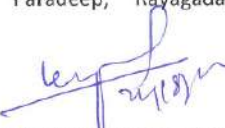
Encl : As above

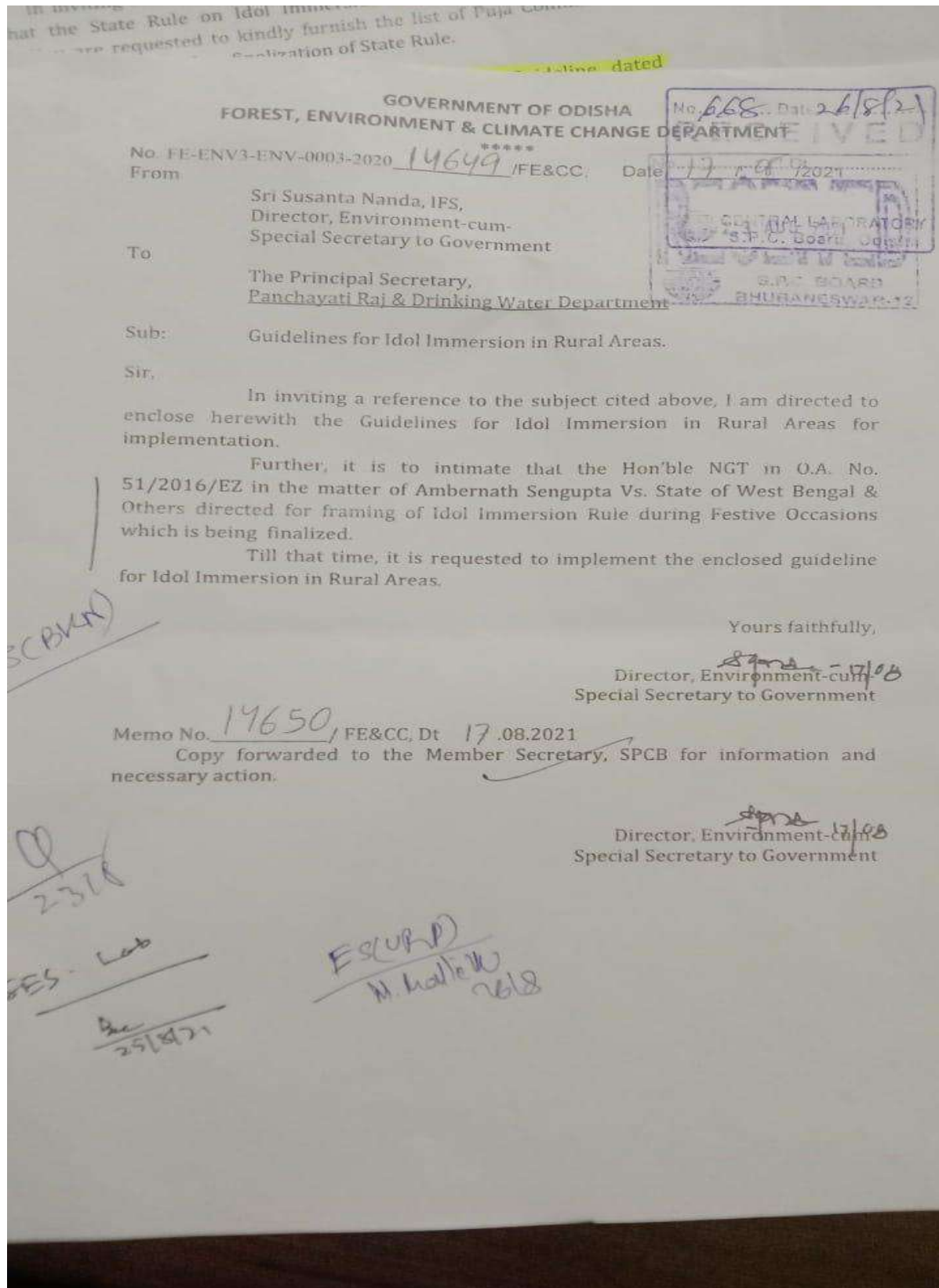
  
MEMBER SECRETARY

Memo No. 15241(14) /dt. 24.08.2022

Copy forwarded to the Regional Officers of State Pollution Control Board, Odisha at Angul, Balasore, Balangir, Bhubaneswar, Berhampur, Cuttack, Jharsuguda, Keonjhar, Koraput, Kalinganagar, Paradeep, Rayagada, Rourkela and Sambalpur for kind information and necessary action.

Encl : As above

  
MEMBER SECRETARY





## GUIDELINES FOR IDOL IMMERSION IN RURAL AREAS


- i. Idols made up of only natural, bio-degradable, eco-friendly raw materials, without any toxic ingredients should be encouraged / allowed. Idols made up of Plaster of Paris (PoP) shall be banned.
- ii. Use of Single use plastic and the thermocol materials shall not be permitted.
- iii. Use of toxic and non-biodegradable chemical dyes/ oil paints for painting idols are to be strictly prohibited.
- iv. For beautification of idols, removable and washable decorative clothes, made only with natural materials and dyes shall be used in place of disposable materials.
- v. As far as possible, low height and eco-friendly idols should be used for offering poojas to avoid impact on environment.
- vi. Biodegradable plates may be used in place of single use plastic and polystyrene, for Prasad distribution and other purposes.
- vii. Worship materials and decorating materials should be removed before immersion.
- viii. Instead of immersion of idols in water bodies, villages should be encouraged to create temporary ponds/ tanks of suitable size and adequate capacity.
- ix. The temporary 'Idol immersion Ponds/Tanks, with the liner made with well graded/ highly impervious clay or eco synthetic lines, should be arranged on the banks of rivers or stagnant water.
- x. Lime or alum or any other equivalent coagulant should be added in designated temporary lined pond/ tank as pre-treatment.
- xi. Waste collection center in the vicinity of the designated temporary/ artificial idol immersion sites or locations are to be arranged for ensuring collection of segregated materials.



Your Signature will appear here.



Tel : 0671-2314255  
E-mail: [rospeb.cuttack@ospeboard.org](mailto:rospeb.cuttack@ospeboard.org)  
Website: [www.ospeboard.org](http://www.ospeboard.org)

**OFFICE OF THE REGIONAL OFFICER, CUTTACK**  
**STATE POLLUTION CONTROL BOARD, ODISHA**  
[DEPARTMENT OF FOREST & ENVIRONMENT, GOVERNMENT OF ODISHA]  
586, SURYAVIHAR, LINK ROAD CUTTACK-753012

No. 2103 / (RO/ CTC/ LAB-05) Date. 03.11.2022  
To  
The Member Secretary,  
State Pollution Control Board, Odisha,  
A/118, Nilakantha Nagar, Unit- VIII, Bhubaneswar

Sub: Submission of action taken report in compliance to the "Odisha Prevention and Control of Water Pollution (Procedure for immersion of idols after Pujas) Rules, 2021" during **Ganesh Puja & Dushera Festival, 2022**– reg.

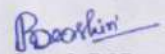
Ref: Your Letter No. 15393 dtd. 05.10.2021 & Letter No.19938, dtd.28.10.2022 of VI-Sc (LEM) – Proj-64 (Vol-III) / 22-23.

Sir,

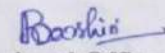
In inviting reference to the subject cited above, please find enclosed herewith the action taken report in compliance to the "Odisha Prevention and Control of Water Pollution (Procedure for immersion of idols after Pujas) Rules, 2021" during **Ganesh Puja & Dushera Festival, 2022** in Cuttack City.

*ok*

This is for your kind information and necessary action.

Yours faithfully  
  
Regional Officer

Memo No 2104 Dt. 03.11.2022  
Copy forwarded to Addl. Chief. Env. Scientist (L), Central Laboratory, State Pollution Control Board, Odisha, Plot No—B-59/2 and 59/3, Chandaka Industrial Estate, Patia, Bhubaneswar for kind information.

  
Regional Officer

**ACTION TAKEN REPORT IN COMPLIANCE TO ODISHA  
PREVENTION OF WATER POLLUTION (PROCEDURE FOR  
IMMERSION OF IDOL AFTER PUJAS) RULES, 2021 DURING GANESH  
PUJA AND DUSHERA FESTIVAL, 2022 IN CUTTACK CITY**

Idol immersion has contributed a significant role in water pollution of Rivers, Nallas and other water bodies. To regulate the issue, many significant steps have been taken by the Central and State Government. Central Pollution Control Board (CPCB) has published guideline on Idol immersion for immersion of Idols in the festive occasion. Further, the guideline has been revised on dated 12.05.2020

Based on the aforesaid guideline and as per the Letter No.15871, dt. 30.08.2022 of SPC Board, Odisha, Bhubaneswar, the Regional Office, State Pollution Control Board, Cuttack had carried out water quality monitoring of rivers to assess the pollution loads on water bodies due to immersion of idols during **Ganesh Puja** and **Durga Puja Festival, 2022** of Cuttack City.

For the **Festival of Ganesh Puja, 2022**, Cuttack Municipal Corporation (CMC), Cuttack had constructed 11 no of temporary ponds for immersion of idols at Kahannagar Balighat, Nuapada Balighat, Abhiram Math Nuapada, Nehrupali, Jobra Dasatutha, Matyamath, Kartikeswar gada, Chahata, Brajabiharipur, Devigada & Gopalpur as informed by CMC and verified .

For the **Festival of Dushera, 2022**, the Cuttack Municipal Corporation (CMC), Cuttack had constructed 03 no of temporary ponds at Devigada, Purigahat for immersion of idols as observed.

As observed during Water Quality Monitoring, the temporary ponds were provided with HDPE liner, Hoarding Board and approach road for easy access to the temporary immersion site.

During immersion of idols of **Ganesh Puja, 2022** most of the idols were immersed in the temporary ponds available at Devi Gada near Puri Ghat of Kathjori River and very less no of idols were immersed in the temporary immersion ponds made at other locations of Cuttack City, as mentioned above. Photographs of the idol immersion ponds are attached as **(Annexure-I)**.

Cont...

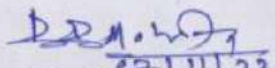
As information received from CMC all the idols of **Dushera Festival, 2022** were immersed in the temporary ponds available at Devi Gada near Puri Ghat of Kathjori River. Photographs of the idol immersion ponds are attached as **(Annexure-II)**. After immersion, immediately, the left over material from the temporary immersion ponds were observed to be removed by Dozer and loaded to the Tractor of Municipality for final disposal at the designated Municipal dump site. Further, it was observed that the temporary pond water was cleaned by adding lime.

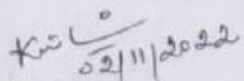
#### **Water Quality Monitoring carried out as per the guideline**

The Officials of the Regional Office, SPCB, Odisha, Cuttack had collected water samples from rivers i.e Up stream - 100m up from temporary pond, immediate of temporary pond, Downstream - 100m down from temporary pond and further downstream of river Kathajori and Mahanadi during **Ganesh Puja**, in three stages, on pre idol immersion (dt.03.09.2022), during idol immersion (dt.12.09.2022) and post idol immersion after 3<sup>rd</sup> (dt. 15.09.2022), 5<sup>th</sup> (dt.17.09.2022), 7<sup>th</sup> (dt.19.09.2022) & 9<sup>th</sup> (dt.21.09.2022) day of the immersion and submitted the samples to Central Laboratory, SPC Board at Patia, Bhubaneswar for analysis of following parameters.

pH, O, Colour, BOD, COD, Conductivity, Turbidity, TDS, Chloride, TSS, Hardness, Total Alkalinity and Metals (Such as Chromium, Lead, Zinc, Copper, Cadmium, Mercury, Antimony, Barium, Cobalt, Manganese, Strontium).

Similarly, water sampling was carried out only for river Kathajori i.e Up stream - 100m up from temporary pond, immediate of temporary pond, Downstream - 100m down from temporary pond and further downstream of river Kathajori during **Durga Puja** in three stages, on pre idol immersion (dt.29.10.2022), during idol immersion (dt.07.10.2022) and post idol immersion after 3<sup>rd</sup> (dt. 10.10.2022), 5<sup>th</sup> (dt.12.10.2022), 7<sup>th</sup> (dt.14.10.2022) & 9<sup>th</sup> (dt.16.10.2022) day of the idol immersion and submitted the samples to Central Laboratory, SPC Board at Patia, Bhubaneswar for analysis of aforesaid parameters.

  
22/11/22  
**Mr. B. B Mohanty**  
(Asst. Scientific Officer)

  
22/11/22  
**Mrs. K.M. Bihari**  
(Dy. Env. Scientist)

Annexure-II

**PHOTO OF IDOL IMMERSION, DUSHERA, 2022, CUTTACK**



**Annexure-II**

**PHOTOS OF IDOL IMMERSION, GANESH PUJA, 2022, CUTTACK**





**Annexure-7**

Tel.: 06782-244110

Website: [www.ospcbboard.org](http://www.ospcbboard.org)

E-mail: [rospcb.balasore@ospcbboard.org](mailto:rospcb.balasore@ospcbboard.org)



REGIONAL OFFICE, BALASORE  
**STATE POLLUTION CONTROL BOARD, ODISHA**  
(FOREST, ENVIRONMENT & CLIMATE CHANGE DEPT., GOVT. OF ODISHA)  
Plot No.1602, Ganeswarpur, Balasore – 756019

No. 2338 /Estt. 232

Dt. 01-11-2022  
By E-mail/Speed Post

To,

The Member Secretary  
State Pollution Control Board, Odisha  
Bhubaneswar

**Sub: Effective implementation of the "Odisha Prevention and Control of Water Pollution (Procedure for Immersion of Idol after Pujas) Rules, 2021" – Reg.**

**Ref. Your letter No.19938, dt.28.10.2022**

Sir,

With reference to the above, kindly find the enclosed details of action taken report for effective implementation of the "Odisha Prevention and Control of Water Pollution (Procedure for Immersion of Idol after Pujas) Rules, 2021 for information and necessary action.

**Encl: As above**

Yours faithfully,

  
Regional Officer

**A BRIEF ACTION TAKEN REPORT ON IDOL IMMERSION IN BALASORE MUNICIPALITY, BARIPADA MUNICIPALITY AND BHADRAK MUNICIPALITY OF BALASORE, MAYURBHANJ AND BHADRAK DISTRICT IN THE YEAR 2022-23.**

Idol immersion has contributed a significant role in water pollution of rivers, nallas and other water bodies. To regulate the issue, many significant steps have been taken by the Central and State Government. Further, CPCB has published guideline on Idol immersion and a revised guideline dated 12.05.2020 has been published for immersion of Idols during ensuing festivals. Further, Government of Odisha has framed a rule i.e. The Odisha Prevention and Control of Water Pollution (Procedure for immersion of idol after Pujas) Rules, 2021 vide notification no. 17937, dated 04.10.2021 in compliance of O.A. No. 51/2016 (EZ) titled as "Ambernath Sengupta Vs the State of West Bengal & Ors".

State Pollution Control Board, Bhubaneswar had communicated with all the Collector & District Magistrate and requested for implementation of the "Odisha Prevention and Control of Water Pollution (Procedure for immersion of idol after Pujas) Rules, 2021". vide letter no. 15235, dtd 24.08.2022 and also communicated to the Executive officers of the municipalities vide memo no. 15240 dated 24.08.2022. and requested to submit the action taken report w.r.t. the guidelines of "Odisha Prevention and Control of Water Pollution (Procedure for immersion of idol after Pujas) Rules, 2021".

In compliance to the aforementioned Guidelines & Rules prepared by the Central Pollution Control Board, Delhi & Govt. of Odisha, on practice of Idol Immersion, the Balasore Municipality, Baripada Municipality and Bhadrak Municipality were constructed the Artificial Ponds for ensure implementation of the said Guidelines & Rules for idol immersion in the festive occasion such as Durga Puja, Kali Puja, Laxmi Puja etc.

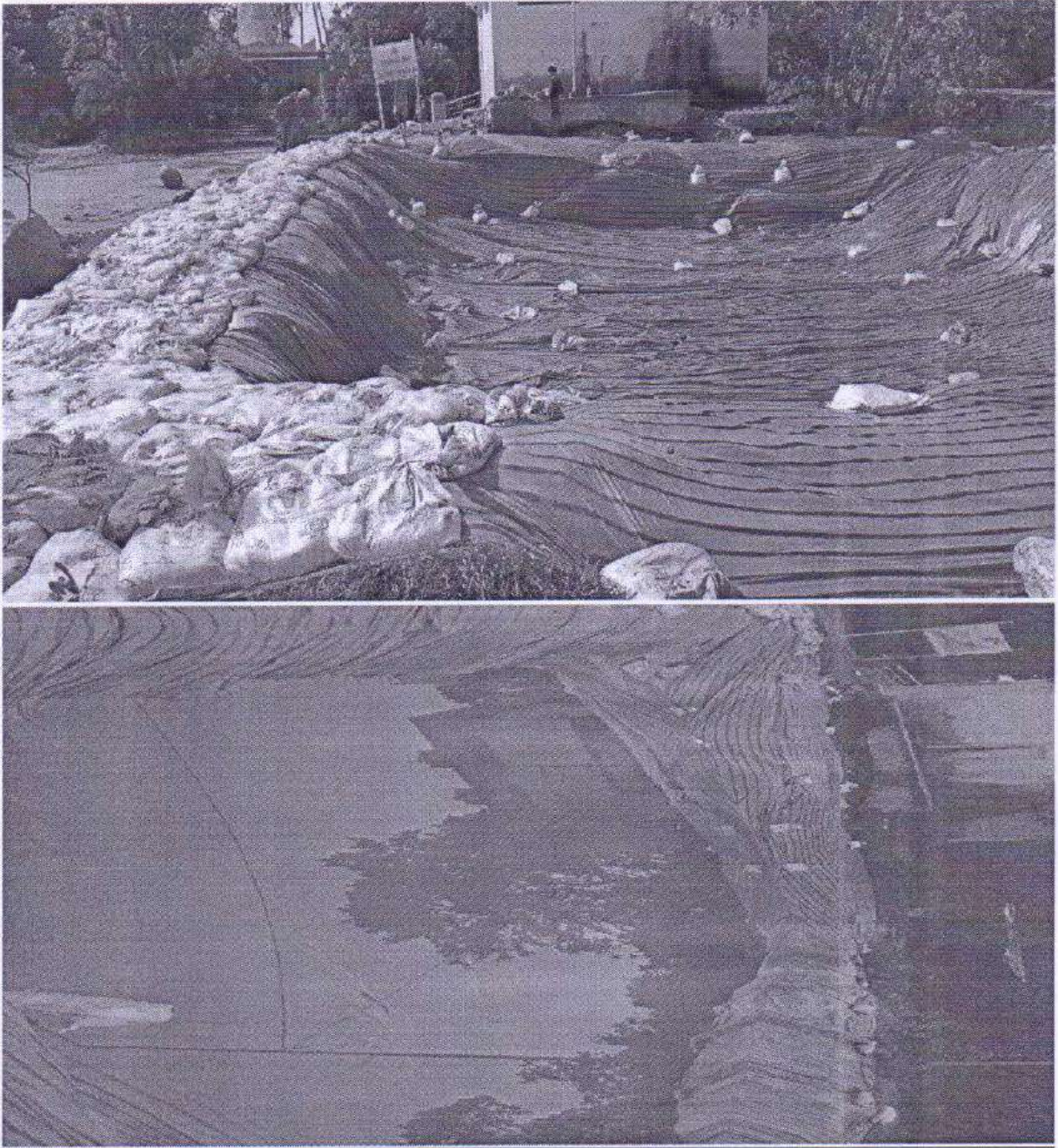
**ACTION TAKEN BY BALASORE MUNICIPALITY**

Balasore Municipality, was constructed 01 number of Artificial Pond at Balighat near the bank of River Budhabalanga. As informed by the Municipality authority Balasore, the dimension of the artificial pond was as follows,

- 01.Length-21m
- 02.Breadth-18m
- 03.Depth-3m.

The photographs of the artificial idol immersion pond of Balasore Municipality are given below. The nos. of idol immersed in the artificial pond is not available with the Municipality.









**Artificial idol immersion Pond constructed by Balasore Municipality**

**ACTION TAKEN BY BARIPADA MUNICIPALITY**

The Baripada Municipality, was constructed 01 number of Artificial Pond at Madhubana (Astia) near the bank of River Budhabalanga. As informed by the Municipality authority Baripada, the dimension of the artificial pond was as follows,

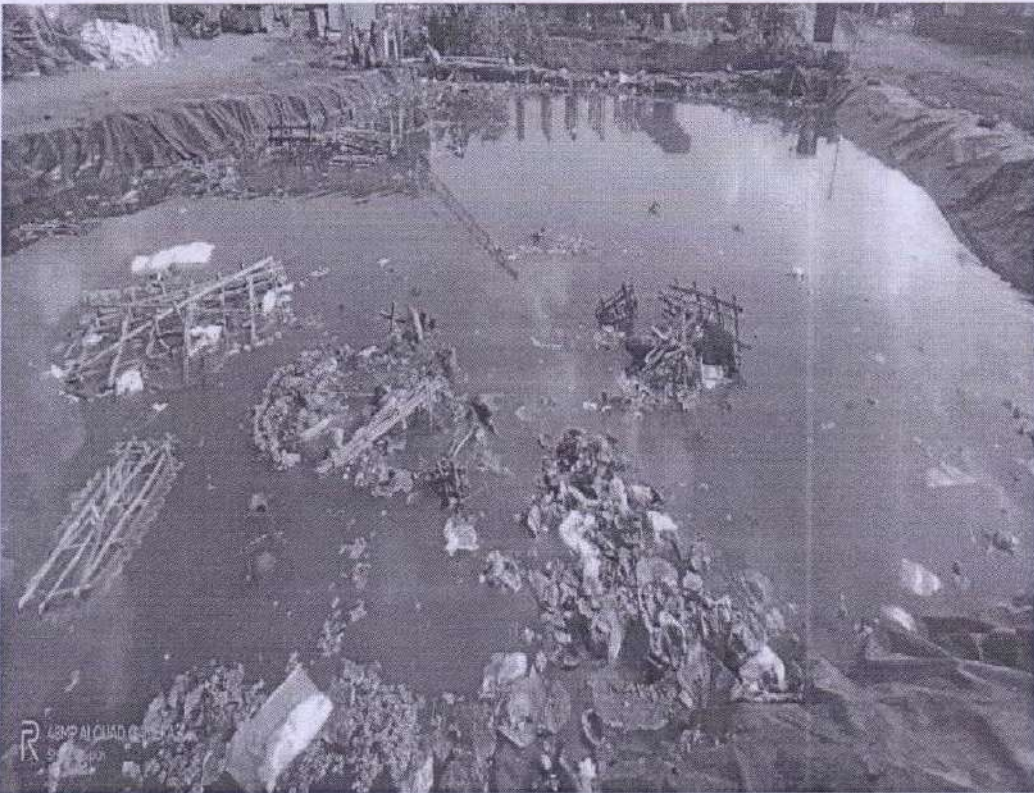
01.Length-65ft.

02.Breadth-65ft.

03.Depth-10ft.

The photographs of the artificial idol immersion pond of Baripada Municipality are given below. The nos. of idol immersed in the artificial pond is not available with the Municipality:







### **Artificial idol immersion Pond constructed by Baripada Municipality**

#### **ACTION TAKEN BY BHADRAK MUNICIPALITY**

The Bhadrak Municipality, was constructed 02 number of Artificial Pond near River Salandi. As informed by the Municipality authority Bhadrak, the dimension of the artificial ponds were equal which were as follows:



01. Length-50ft.
02. Breadth-15ft.
03. Depth-10ft.

The Bhadrak municipality has provided only one no of photograph of the artificial idol immersion pond. The nos. of idol immersed in the artificial ponds is not available with the Bhadrak Municipality.

  
Er. Manmohan Murmu  
Regional Officer



Tel:9438883908

Email: rospcb.bolangir@ospcbboard.org

Website: www.ospcbboard.org



OFFICE OF THE REGIONAL OFFICE, BALANGIR  
**STATE POLLUTION CONTROL BOARD, ODISHA**  
[DEPARTMENT OF FOREST & ENVIRONMENT, GOVERNMENT OF ODISHA]  
Koshal Chowk, Palace Lane, Balangir -767001

No....1111...../ Misc/10

Date.11.05.2024

"By e-mail"

From:

Er. Babita Singh  
Regional Officer

To,

The **Member Secretary**,  
State Pollution Control Board, Odisha  
Paribesh Bhawan, A/118, Nilakanthanagar, Unit-VIII,  
Bhubaneswar-751012

Sub: Submission of action taken on action taken on effective implementation of the "Odisha Prevention and Control of Water Pollution (Procedure of Immersion of Idol after Pujas) Rules,2021 reg

Ref: Head Office Letter No.19938(14) dt.28.10.2022

Sir,

In inviting a reference to the above , please find enclosed herewith the action taken by M/s.Balangir Municipality under jurisdiction of Regional Office,Balangir on effective implementation of the "Odisha Prevention and Control of Water Pollution (Procedure of Immersion of Idol after Pujas) Rules,2021 .

This is for your kind information and necessary action.

Yours faithfully

Encl: As above

  
Regional Officer

**Implementation of the guideline prepared by CPCB on Practice of Idol Immersion by Regional Office, Bolangir**

| Name of the District | Name of the ULB       | Nos. And Size of immersion Pond   | Nos. Of Idol Immersed |
|----------------------|-----------------------|---|-----------------------|
| Balangir             | Balangir Municipality | <ul style="list-style-type: none"> <li>◆ <b>Tulsinagar, Circuit House Road of Balangir:</b> The construction of temporary pond having bamboo bunds and laying of synthetic liner were undertaken by the Balangir Municipality .</li> <li>◆ Size of the pond<br/>60ft x 50M x 4ft</li> </ul> | 18                    |

M/s. Balangir Municipality has provided one no of Artificial Pond for immersion of idols during Durga Puja and after immersion they have disinfected the water by adding Lime and bleaching powder and then discharged to municipality drain.



Idol Immersion Pond with synthetic liner provided by *Balangir* Municipality

  
**Regional Officer**





OFFICE OF THE  
MUNICIPAL COUNCIL, KEONJHARGARH

At/P.O.-Keonjhar, Dist.-Keonjhar, Odisha, Pin-758001  
Phone/Fax: (06766) 255413, E-mail:-keonjharm.hud@rediffmail.com

Letter No 8348/KGM

Date 11.11.2022

To

The Member Secretary,  
State pollution Control Board, Odisha  
Paribesh Bhawan, A/18, Nilakantha Nagar,  
Unit-VIII, Bhubaneswar-751012.

Sub- Effective implementation of the Odisha prevention and control of water pollution  
(procedure for immersion of idols after puja) rules, 2021 reg.

Ref: - Your memo No- 19941 dt-18.10.2022.

Sir,

With reference to the memo on the subject cited above, I am to inform you that Nuapokhari in Ward No-5 was identified as idols immersion spot and all the members of different Puja committees were instructed to obey the guidelines as well as were instructed to undertake immersion of idols in the identified spot. Necessary steps were also taken by Keonjhar Municipality for cleaning and site development of the pond and other sanitation work of the pond site to make it usable as per guidelines. Idols immersion was made as per guideline under the direct supervision of Executive Officer, Keonjhar Municipality and other administrative officials.

This is for favour of your kind information .

Yours Faithfully,

Encl:- 1-Photos of cleaning and site development  
2-Photos of Idols immersion.

Executive officer  
Keonjhar Municipality  
Dt. 11.11.2022

Memo No- 8349 /KGM  
Copy submitted to the Regional Officer, State Pollution Control Board, Baniapat, Keonjhar for information & necessary action.

Executive Officer  
Keonjhar Municipality  
Dt. 11.11.2022

Memo No- 8350 /KGM  
Copy submitted to the Collector & District Magistrate Keonjhar for kind information & necessary action.

Executive Officer  
Keonjhar Municipality  
11/11/2022





Annexure-10

**OFFICE OF THE NOTIFIED AREA COUNCIL, BANKI**

No. 2965 / Date 27/11/22



To

State Pollution Control Board, Odisha  
Bhubaneswar.

**Sub:- Effecting implementation of the “Odisha prevention and control of water pollution immersion of idol after pujas.**

Ref:- Your letter No-19938(14), Date-28.10.2022.

Sir,

With reference to the subject cited above, effective measures has been taken like splitting of bleaching powder near the Covid Care house where all idols are immersed and artificial pond was made by polythene for the immersion of idols of 4ft depth of Banki NAC area.

This is for kind information.

*WGP*  
27/11/22  
for Executive Officer  
Executive Officer  
NAC, Banki



**Annexure-11**

Tel : 06792-252703  
Website : [www.baripadamunicipality.in](http://www.baripadamunicipality.in)  
e-mail : baripadam.hud@nic.in



**OFFICE OF THE BARIPADA MUNICIPALITY  
BARIPADA, MAYURBHANJ- 757001**

No. 8061 / Date 01.11.2022

To

The Member Secretary,  
State Pollution Control Board, Odisha,  
Paribesh Bhaan , A/118 , Nilakanthanagar,  
Unit-Viii, Bhubaneswar, Pin-751012

Sub- Effecting implementation of the "Odisha Prevention and control of water  
Pollution ( Procedure for immersion of idol after pujas) Rues, 2021.

Ref- Letter no. 19938 (14) dt. 28.10.2022


Sir,

In Inviting reference to the letter on the subject cited above, I am to say that peace committee meeting was held on 12.09.2022 under the Chairmanship of Sub-Collector, Baripada. All concerned officers were also participated in the meeting. In the above meeting, it was decided that there will be no immersion procession and the immersion will be made in the day time in the artificial pond created by Baripada Municipality at the riverbank of Budhabalanga near Madhuban Talasahi.

The decision taken in the meeting has been implemented and no dislocation pointed out. Temporary pond measuring 65' X 65' created by Baripada Municipality at Madhuban Talasahi at the river bank of Budhabalanga covering cable polythene inside it and the pond was filled with water by 2 nos. of 0.5 HP Diesel Pumps. Photographs of each stage were taken and enclosed herewith for kind reference.

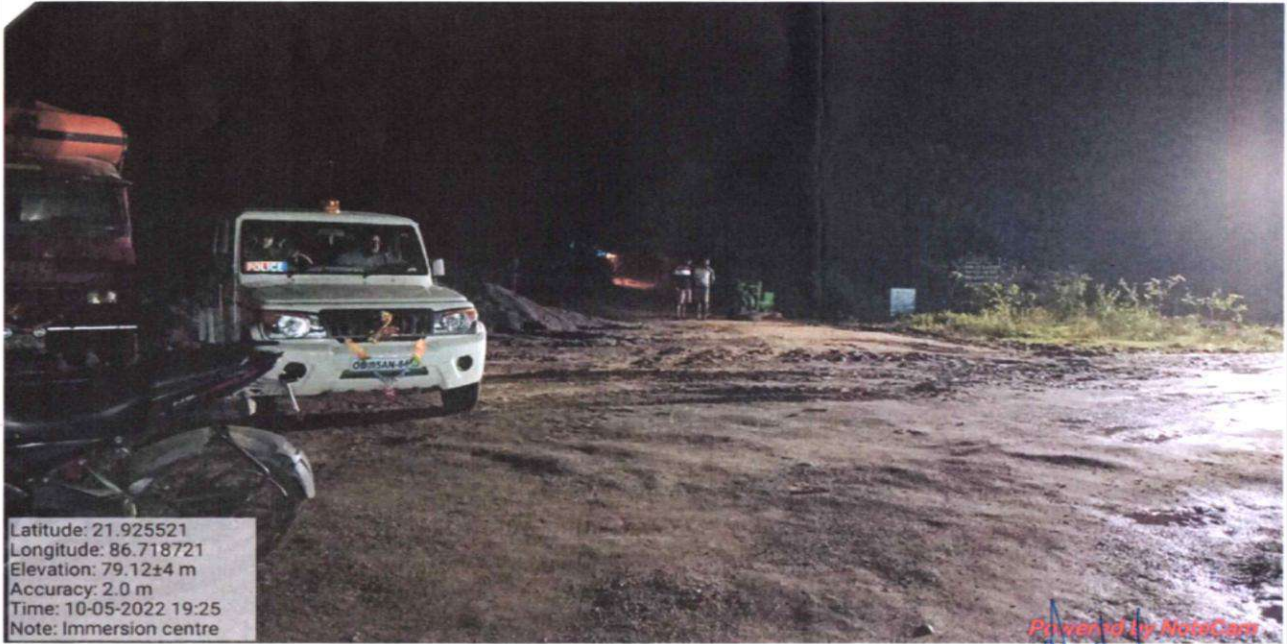
The same procedure has been followed during Laxmipuja and Kali Puja and other festivals similar procedure have been followed.

Yours faithfully

  
Executive Officer,  
Baripada Municipality

ENCL.-AS ABOVE

  
01/11/22



Executive Officer  
Baripada Municipality

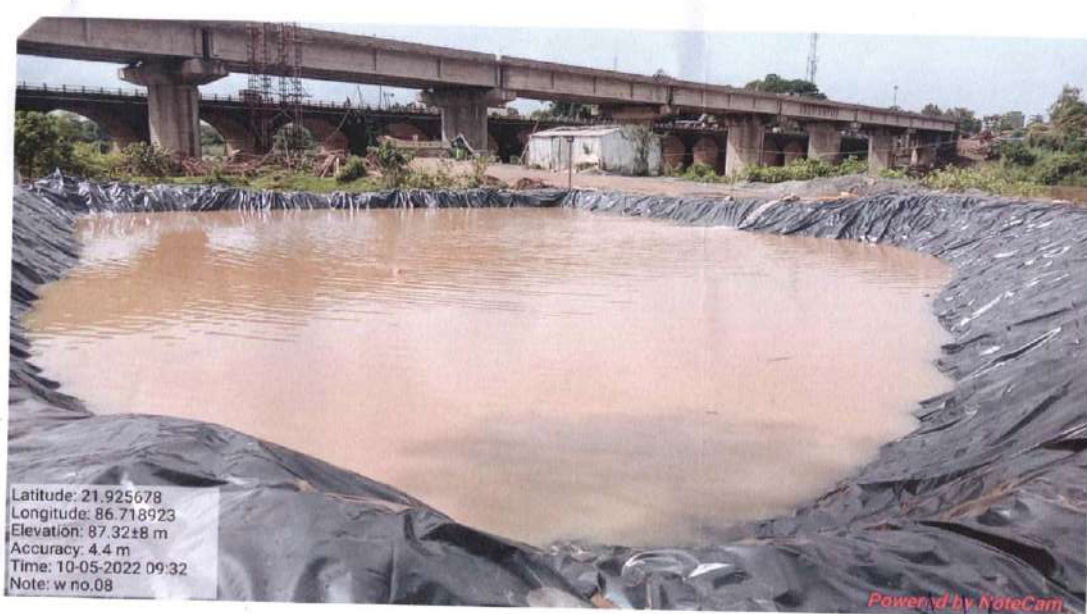


Executive Officer  
Baripada Municipality



Powered by NoteCam

  
Executive Officer  
Baripada Municipality



Powered by NoteCam

  
Executive Officer  
Baripada Municipality





E-mail: [rospcb.berhampur@ospboard.org](mailto:rospcb.berhampur@ospboard.org)

Website: [www.ospboard.org](http://www.ospboard.org)

REGIONAL OFFICE OF THE  
STATE POLLUTION CONTROL BOARD, ODISHA  
[DEPARTMENT OF FOREST, ENVIRONMENT & CLIMATE CHANGE, GOVERNMENT OF ODISHA]  
2<sup>nd</sup> Floor, New Division Office, IDCO, Berhampur Division,  
Industrial Estate, Berhampur, Dist- Ganjam - 760008, Odisha, India

No. 3425 / Legal (Misc)-01/2015

Dt. 02/11/2022  
E-despatch/E-mail

To

The Additional Chief Environmental Scientist,  
Central Laboratory,  
State Pollution Control Board, Odisha,  
Plot No.B-59/2 & 3, Chandaka Industrial Estate, Patia,  
Bhubaneswar-751024

**Sub:** Submission of Action taken report on effective implementation of the "Odisha Prevention and Control of Water Pollution (Procedure for Immersion of Idol after Pujas) Rules, 2021" during festive season 2022- reg.

Ref: - Head Office letter no. 19938( 14) dtd. 25.10.2022.

Sir,

With reference to the above, the action taken report on effective implementation of the "Odisha Prevention and Control of Water Pollution (Procedure for Immersion of Idol after Pujas) Rules, 2021" during festive season 2022 is enclosed for favour of kind information and necessary action.

Encl: As above

Yours faithfully,

  
REGIONAL OFFICER



# ଭସାଣିରେ ଅବ୍ୟବସ୍ଥା: ଭୂଠରେ ଥୁଆ ହେଲା ମୂର୍ତ୍ତି

ବ୍ରହ୍ମପୁର, ୧୯ (ସ.ପ୍ର.): ବ୍ରହ୍ମପୁର ସହରରେ ଗଣେଶ ପୂଜା ମହାସମାରୋହରେ ପାଳିତ ହେଉଛି । ବିଭିନ୍ନ ମଣ୍ଡପରେ ପୂଜା ପାଉଛନ୍ତି ଅନ୍ତର୍ଭୁକ୍ତ । ତେବେ ଘରେ, ଶିକ୍ଷାନୁଷ୍ଠାନ ଏବଂ ଅନ୍ୟାନ୍ୟ ପ୍ରତିଷ୍ଠାନରେ ଯେଉଁମାନେ ଶ୍ରୀ ଗଣେଶ ପୂଜା କରୁଥିଲେ, ସେମାନେ ଆଜିଠାରୁ ଭସାଣି ଆରାଧ୍ୟ କରିଦେଲେଣି । ପ୍ରତି ବର୍ଷ ବ୍ରହ୍ମପୁର ମହାନଗର ନିଗମ(ବିଏମ୍‌ସି) ତରଫରୁ ମୂର୍ତ୍ତି ଭସାଣି ପାଇଁ ଅସ୍ଥାୟୀ ପଖୋରା ନିର୍ମାଣ କରିଥାନ୍ତି । ହେଲେ ଚଳିତ ବର୍ଷ ଅସ୍ଥାୟୀ ପଖୋରା ନିର୍ମାଣ କରାଯାଇନଥିବାରୁ ନାନା ଅବ୍ୟବସ୍ଥା ଦେଖିବାକୁ ମିଳିଛି । ପୋଖରୀ ଭିତରେ ମୂର୍ତ୍ତି ବିସର୍ଜନ ପାଇଁ ବାରଣ ହୋଇଥିବା ଯୋଗୁଁ ଭୂଠରେ ମୂର୍ତ୍ତି ଗର୍ଭଦେଇ ଆନ୍ଦୋଳକମାନେ ଚାଲି ଯାଉଥିବା ଦେଖିବାକୁ ମିଳିଛି ।



ପୋଖରୀ ଭୂଠରେ ଥୁଆ ଗଛ ତଳେ ଶହ ଶହ ଗଣେଶ ମୂର୍ତ୍ତିକୁ ଥୋଇ ପୂଜା ଆନ୍ଦୋଳକମାନେ ଚାଲି ଯାଉଛନ୍ତି । ସହରର ଗୋସାଇଁନୂଆଗାଁ, ଚେଟକଡ଼ାର, ଆକୁଳି, କମାପଲ୍ଲୀ, ବିଜିପୁର, ଗୋଲାପଲ୍ଲୀ ପୋଖରୀ ସମେତ ସବୁଆଡ଼େ ଏଭଳି ଚିତ୍ର ଦେଖିବାକୁ ମିଳୁଛି । ଏକ ସୁନ୍ଦର ସହାୟିକା ଗୋଷ୍ଠୀ ଜଣେ ସଦସ୍ୟଙ୍କ କହିବାନୁଯାୟୀ, ମୂର୍ତ୍ତି ପକାଇବା ପାଇଁ କାହାକୁ ମଧ୍ୟ ଅନୁମତି ଦିଆଯାଇ ନାହିଁ । ମୂର୍ତ୍ତିଗୁଡ଼ିକ ପୋଖରୀ ଭୂଠରେ ଗଢ଼ାଯାଇଛି । ବିଏମ୍‌ସିର ସଫେଇ କମିଟିଗାନାମେ ଆସି ତାହାକୁ ନେଇ ଅନ୍ୟତ୍ର ବିସର୍ଜନ କରିବାକୁ ଚାହାନ୍ତି । ଅନ୍ୟପଟେ ଅସ୍ଥାୟୀ ପୋଖରୀ ନିର୍ମାଣରେ ବିଳମ୍ବ ହେଉ ନେଇ ଅନେକ ପୂଜା କମିଟିର କର୍ମକର୍ତ୍ତା ଅସନ୍ତୋଷ ପ୍ରକାଶ କରିଛନ୍ତି । ଏ ସମ୍ପର୍କରେ ବିଏମ୍‌ସିର ଏକପୋର୍ଟମେଣ୍ଟ ଅଧିକାରୀ ଚନ୍ଦ୍ରଶେଖରଙ୍କ ସହ ଯୋଗାଯୋଗ କେଲେ ସେ କହିଛନ୍ତି ଯେ, ଅସ୍ଥାୟୀ ପୋଖରୀ ନିର୍ମାଣ ଆରାଧ୍ୟ କରାଯାଇଛି । ନିର୍ମାଣ ହେବା ପରେ ସେଠାରେ ମୂର୍ତ୍ତି ବିସର୍ଜନ କରାଯାଇପାରିବ ବୋଲି ସେ ପ୍ରକାଶ କରିଛନ୍ତି ।

ପାଇଁ ପୂଜା ପଞ୍ଚାଙ୍କ ପ୍ରସ୍ତୁତ କରାଯାଇଛି । ନିର୍ମାଣ ହେଉଥିଲା । କିନ୍ତୁ ଚଳିତ ବର୍ଷ ଏଥିରେ ଅନେକ ସ୍ଥାନରେ ଭସାଣି ମଧ୍ୟ ଆରାଧ୍ୟ ହୋଇଗଲାଣି । ପୂର୍ବରୁ ସାଧାରଣତଃ ନିକଟସ୍ଥ ପଖୋରୀରେ ସମସ୍ତେ ମୂର୍ତ୍ତି ବିସର୍ଜନ କରୁଥିଲେ । ନ୍ୟାସନାଳ ଗ୍ରାମ୍‌ ଟ୍ରାଇବୁନାଲର ନିର୍ଦ୍ଦେଶ ପରେ ଅସ୍ଥାୟୀ ପୋଖରୀ ନିର୍ମାଣ କରାଯାଇଛି । ବିଏମ୍‌ସି ତରଫରୁ ପ୍ରତି ବର୍ଷ ଗୋସାଇଁନୂଆଗାଁ, ଗୋଲାପଲ୍ଲୀ ପୋଖରୀ ଆମ୍ବୁଆ, ଆକୁଳି, ଫାଡ଼ଗେଟ ଆଦି ସ୍ଥାନରେ ଥୁଆ ପୋଖରୀ ନିର୍ଦ୍ଦେଶ କରୁଛନ୍ତି । ଫଳରେ

The Seemaj (Bex&campus Edition)  
Page No. ୧, Dtd- ୦୩-୦୧- ୨୦୨୨

### ସମ୍ବାଦ

# ବନ୍ଧ ଜଗିଲେ ଏସ୍‌ଏଚ୍‌ଜି ମହିଳା, ମୂର୍ତ୍ତି ବିସର୍ଜନକୁ ବାରଣ କଲେ

ବ୍ରହ୍ମପୁର, ୪।୯(ଉମିସ): ଗଣେଶ ପୂଜା ପରେ ଏବେ ମୂର୍ତ୍ତି ବିସର୍ଜନ ପାଇଁ ମମତା ବନ୍ଧମୁହାଁ। ବନ୍ଧରେ ବିସର୍ଜନକୁ ରୋକିବା ପାଇଁ ଏବେ ଅଣ୍ଟା ଢିଡ଼ିଛନ୍ତି ସ୍ୱୟଂ ସହାୟିକା ଗୋଷ୍ଠୀ। ମକାଳୁ ମନ୍ତ୍ରୀ ପର୍ଯ୍ୟନ୍ତ ତୁଳସୀ ଜଗିଛନ୍ତି। ସିଏ ବିସର୍ଜନ ପାଇଁ ମୂର୍ତ୍ତି ନେଇ ଆସୁଛି, ତା'କୁ ବାରଣ କରୁଛନ୍ତି। କେବଳ ପାଣିରେ ପ୍ରତିମାକୁ ବୁଡ଼ାଇ ନିକଟରେ ଥିବା ମନ୍ଦିରରେ ରଖିଦେବାକୁ କହୁଛନ୍ତି। ଏଥିପାଇଁ ପୂଜା ସାମଗ୍ରୀ ଗୁଡ଼ିକ ବନ୍ଧ ପାଣିରେ ପକାଇବାକୁ ଦେଉଳାହାଡ଼ି। ପୂଜା ସାମଗ୍ରୀକୁ କେବଳ ପାଣିରେ ବୁଡ଼ାଇ ନିକଟରେ ଥିବା ତଟ୍ଟାରେ ପକାଇବାକୁ ପରାମର୍ଶ ଦେଉଛନ୍ତି। କିଛି ଅମାନ୍ୟା ମେମ୍ବରଙ୍କ କଥା ନ ଶୁଣି ବନ୍ଧରେ ବିସର୍ଜନ କରି ତାଲି ଯାଉଛନ୍ତି। ଏହାପରେ ସେହି ମହିଳାମାନେ ବିସର୍ଜିତ ପ୍ରତିମା ଏବଂ ପୂଜା ସାମଗ୍ରୀକୁ ବନ୍ଧରୁ ବାହାର କରିବାର ବ୍ୟବସ୍ଥା କରୁଛନ୍ତି। କେବଳ ସେତିକି ନୁହେଁ, ଗଡ଼କାଳି ଯେଉଁସବୁ ପ୍ରତିମା ଏହି ବନ୍ଧରେ ବିସର୍ଜନ କରାଯାଇଥିଲା, ଏବଂ ହୁଡ଼ାରେ ରହିଥିଲା, ସେଗୁଡ଼ିକୁ ଏକାଠି ରଖିଛନ୍ତି। ଏଭଳି ଛୋଟବଡ଼ ପ୍ରାୟ ୨ଶହ ପ୍ରତିମା ସଂଗ୍ରହ କରିଛନ୍ତି। ବିଜିପୁର ବନ୍ଧ ହୁଡ଼ାରେ ଆଜି ଏଭଳି ଦୃଶ୍ୟ ଦେଖିବାକୁ ମିଳିଛି। ଏହି ନିଆରା ପଦକ୍ଷେପ ନେଇଛନ୍ତି ବିଜିପୁର ଅଂଚଳର ତିନି ଏସ୍‌ଏଚ୍‌ଜି(ସ୍ୱୟଂ ସହାୟିକା ଗୋଷ୍ଠୀ)ର ମହିଳାମାନେ।

ଅଧିକ ରାହିଦା ରହିଥିଲା। ସ୍ଥାନୀୟ ପ୍ରଶାସନ ପକ୍ଷରୁ ଗଣେଶ ପୂଜା ପରେ ମୂର୍ତ୍ତି ବିସର୍ଜନ ନେଇ ପୂର୍ବସୂଚି ହୋଇ ନଥିଲା। ସେଥିପାଇଁ ବନ୍ଧ, ପୋଖରୀରେ ମୂର୍ତ୍ତି ବିସର୍ଜନ ଦେଖିବାକୁ ମିଳିଥିଲା। ମୂର୍ତ୍ତି ବିସର୍ଜନ ପରେ ପାଣି ପ୍ରଦୂଷିତ ହେଉଥିବା ଖବର ପ୍ରକାଶ ପାଇବା ପରେ ପ୍ରଶାସନ ଚେତୁର। ଫାଷ୍ଟଗୋଟ୍, ବିବେକବିହାର, ମାଳାଯାନଗାର, ଆସ୍ମାରୋଡ଼ରେ ମୂର୍ତ୍ତି ବିସର୍ଜନ ପାଇଁ ଏବେ ଅଣ୍ଟା ଡିଆଁ ପୋଖରୀର ବ୍ୟବସ୍ଥା



ଅଗ୍ରପୂଜ୍ୟଙ୍କ ଆରାଧନା ପାଇଁ ସହର ଉତ୍ସବମୁଖର ହୋଇପଡ଼ିଥିଲା। ଅଧିକାଂଶ ସାହି ଗଳିରେ ଅଣ୍ଟା ପୂଜା ମଣ୍ଡପ ସ୍ଥାପନ ହୋଇଥିବା ବେଳେ ଘରେ, ପ୍ଲାଟରେ ମଧ୍ୟ ଗଜାନନଙ୍କ ପୂଜାର୍ଚ୍ଚନା ହୋଇଥିଲା। ତେବେ ମାଟି ପ୍ରତିମା ଅପେକ୍ଷା ପ୍ଲାଷ୍ଟିକ୍ ଅଫ୍ ପ୍ୟାରିସ୍ ନିର୍ମିତ ପ୍ରତିମାର

କରାଯାଇଛି। ସଚେତନତା ଅଭାବରୁ ପୂର୍ବଭଳି ଆଜି ମଧ୍ୟ ବିଭିନ୍ନ ବନ୍ଧରେ ମୂର୍ତ୍ତି ବିସର୍ଜନ ହେଉଥିବା ଦେଖିବାକୁ ମିଳିଥିଲା। ତେବେ ବିଜିପୁର ବନ୍ଧରେ ଏହାକୁ ରୋକିବା ପାଇଁ ଏସ୍‌ଏଚ୍‌ଜି ମହିଳା ପ୍ରଶଂସନୀୟ ଉଦ୍ୟମ କରିଥିଲେ। ପ୍ରତିମା ଗୁଡ଼ିକୁ ନିକଟରେ ଥିବା ମା'କାଳୀଙ୍କ ମନ୍ଦିର ପରିସରରେ ଏକାଠି ରଖିଛନ୍ତି। ଆସନ୍ତାକାଳି ଏହାକୁ ଅଣ୍ଟା ଡିଆଁ ପୋଖରୀରେ ପକାଇବା ପାଇଁ ବ୍ୟବସ୍ଥା କରିବେ ବୋଲି ପ୍ରକାଶ କରିଛନ୍ତି।



E-mail: [rospcb.rourkela@ospceboard.or](mailto:rospcb.rourkela@ospceboard.or)

Website: [www.ospceboard.or](http://www.ospceboard.or)

**REGIONAL OFFICE  
STATE POLLUTION CONTROL BOARD, ODISHA,  
(DEPARTMENT OF FOREST, ENVIRONMENT & CLIMATE CHANGE, GOVERNMENT  
OF ODISHA)  
At-Near Hockey Chowk, P.O.-Panposh, Rourkela, Dist-Sundargarh-769004**

No. 3113...../

Date. 2/11/2022

From

Dr. B. B. Dash,  
Sr. Env. Scientist & Regional Officer

To

Member Secretary,  
State Pollution Control Board, Odisha  
Bhubaneswar

Sub: Submission of report on action taken on Effective implementation of the "Odisha Prevention and Control of Water Pollution (Procedure for immersion of idol after Pujas) Rules, 2021

Ref: SPCB, Odisha Letter No 19938(14)Dtd. 28.10.2022

Sir,

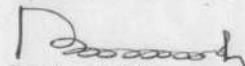
In inviting a reference to the above cited letter, this is to inform that the actions taken for effective implementation to the "Odisha Prevention and Control of Water Pollution (Procedure for immersion of Idol after Puja) Rules, 2021 are given as follows:

1. Distribution of Leaflets to different Puja Committees and Puja Mandaps to appeal to observe Pollution free Pujas.
2. Letter issued for implementation of "Odisha Prevention and Control of Water Pollution (Procedure for immersion of Idol after Puja) Rules, 2021 to all ULBs in the District of Sundargarh vide this Office Letter No. 2840(5) dtd 01.10.2022 and to ULBs in Deogarh District vide This Office Letter No. 2837 Dtd 01.10.2022.

The details of Idol immersion ponds and photographs are annexed as Annexure-I and II.

This is for kind information and needful action.

Yours Faithfully

  
Regional Officer

Annexure-I

Status of implementation of the guideline prepared by CPCB on Practice of idol Immersion by Regional Office, Rourkela

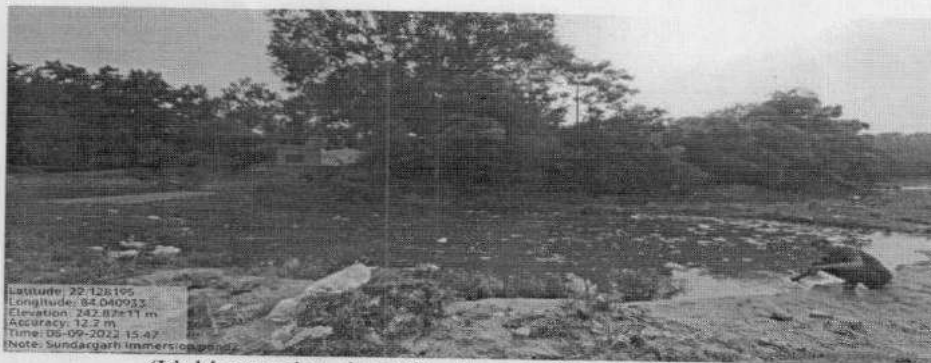
| Name of the District | Name of the ULB                | Nos. And Size of immersion Pond  | Nos. Of Idol Immersion done |
|----------------------|--------------------------------|--|-----------------------------|
| Sundargarh           | Sundargarh Municipality        | <ul style="list-style-type: none"> <li>◆ <b>Bank of Ib River near Mahadevpada Village:</b> The construction of temporary pond having sandbunds and laying of synthetic liner were undertaken by the Sundargarh Municipality.</li> <li>◆ Size of the pond<br/>42M x 40M x 2.5M</li> </ul> | 5                           |
| Sundargarh           | Rourkela Municipal Corporation | <ul style="list-style-type: none"> <li>◆ <b>Near Brahamani River at Balughat:</b> Rourkela Municipal Corporation has provided one no of pitlaying of synthetic liner as immersion pond.</li> <li>◆ Size of the pond<br/>150Ft x 250Ft x 15 Ft</li> </ul>                                 | 120                         |

The water samples were collected from the designated temporary ponds as well as at upstream, downstream and further downstream of Ib and Brahamani River and the water samples were submitted in the Central Laboratory for Heavy metal analysis.

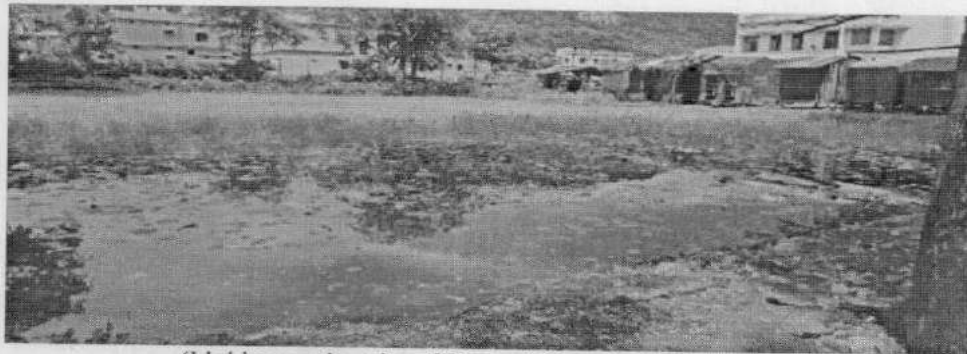
Annexure-II




(Idol Immersion site of Rourkela Municipal Corporation)



(Idol immersion site of Sundargarh Municipality)



(Idol immersion site of Deogarh Municipality)

  
Regional Officer



OFFICE OF THE  
MUNICIPALITY, BASUDEVPUR  
BHADRAK, PIN-756125  
Tel.No.06784-271252  
E-mail: basudevpurn.hud@nic.in

No.....3811.....

Date.....9.11.22

To

The Member Secretary ,  
State Pollution control Board , Odisha  
Paribesh Bhawan,  
A/118 Nilakantha Nagar,  
Unit-VIII, Bhubaneswar- 751012,(Odisha)

Sub:- Regarding Effective implementation of the "Odisha Prevention and Control of Water  
Pollution(Procedure for Immersion of Idol after Pujas)Rule,2021".

Ref:- Letter No- 19938(14), Dtd. 28.10.2022

Sir,

With reference to the subject cited above, I am to inform you that regarding the procedure for Immersion of idol after pujas has been implemented and precaution has been made by Basudevpur Municipality. Selecting a Suitable immersion pond near Bus Stand, Tarini Chhach which is well furnished and precaution has been taken as per guideline. For this all necessary arrangements has been made to check-up the pollution at our end.

This is for your kind information and necessary further action.

Yours Faithfully,

Executive Officer  
Basudevpur Municipality

Memo.....3812..... Dt.....9.11.22

Copy Submitted to the Collector & District Magistrate Bhadrak for favour kind information and necessary action.

Executive Officer  
Basudevpur Municipality

Memo.....3813..... Dt.....9.11.22

Copy Submitted to the Regional Officer, State Pollution Control Board, Baleswar, Odisha for favour of kind information and necessary.

Executive Officer  
Basudevpur Municipality



File No. JM-34/1/2020-SBM/SWM SECTION -JM- JAGATSINGHPUR MUNICIPALTY  
I/81053/2022

50



OFFICE OF THE JAGATSINGHPUR MUNICIPALITY, JAGATSINGHPUR

No 5531 / Date 17-11-2022



To

The Member Secretary,  
State Pollution Control Board, Odisha  
At- Paribesh Bhawan, A/118, Nilakanthnagar, Unit-VIII,  
Bhubaneswar.

Sub:- Compliance to the effective implementation of the "Odisha prevention and control of water Pollution (Procedure for Immersion of idol after Puja) Rules, 2021."

Ref:- SPCB letter No.19938 dt. 25.10.2022.

Sir,

With reference to the subject cited above and in compliance to the CPCB letter No. 5479 dt. 21.10.2022 , this is to submit herewith the report about pre idol immersion , during immersion and post immersion during festival . For pre idol immersion, this establishment issued Letter No. 4634 dt. 12.09.2022 before the festival to the Puja Committees of the Municipality area to use idols made up natural clay and coloured with eco-friendly natural dyes/ colours of idols and immerse in temporary immersion earthen ponds .During immersion as per the instruction No. 1072 dt. 16.09.2022 of District Administration & State Pollution Control Board letter no. 15235 dt. 24.08.2022 , all the idols have been immersed at the area of Galupada, Purohitpur & two places of Alaka near College Chhak in the temporary confined earthen ponds. For post immersion , within 48 hours of the immersion , the left over materials from the pond have been removed for disposal at Dump Site and the supernatant water have been allowed to flow into the river after adding lime to clean the water. Dustbins have been kept at the temporary confined ponds site to keep materials like flowers, decorating materials etc of the idols and which have been disposed of as per the procedure .

This is for favour of kind information & necessary action.

Enclosed:-  
As Above

Memo No. 5532 dt 17-11-2022

Copy submitted to the Collector & District Magistrate, Jagatsinghpur for favour of kind information.

Yours Faithfully

Executive Officer

Jagatsinghpur Municipality

Executive Officer

Jagatsinghpur Municipality



1/75319/2022

File No.REV-14/75/2020-REVENUE-JAGATSINGHPUR COL

315

*Handwritten notes:*  
D.M. B.L.  
1/1/2022  
1/75319/2022



**OFFICE OF THE COLLECTOR & DISTRICT MAGISTRATE  
JAGATSINGHPUR**

*Handwritten notes:*  
v.l.w. 502  
8-9-22  
D. P. S. H.

Memo No. 12969 /Rev. Dt. 06.09.2022

Copy of Letter No. 15235 dt.24.08.2022 of the Member Secretary, SPCB, Odisha, Bhubaneswar regarding effective implementation of the "Odisha Prevention and Control of Water Pollution (Procedure for immersion of Idols after Pujas) Rules, 2021" forwarded to all Tahasildars/Executive Officer, Jagatsinghpur & Paradeep Municipality/ Regional Officer, SPCB, Paradeep for favour of information and necessary action. They are requested to take proactive action to create awareness among the idol makers, puja committee organizers and public to use idols made up of natural clay and coloured with eco-friendly natural dyes/colours, immersion of idols in temporary immersion ponds. Action taken report in this regard may be submitted to the Member Secretary, SPCB, Odisha, Bhubaneswar under intimation to this office.

*Handwritten signature:*  
D.P.S.H.  
06/09/22

**Deputy Collector, Revenue,  
Collectorate, Jagatsinghpur**

\* District Revenue Section, Phone No.06724-220505, e-mail: [dyrcol-jspur.od@nic.in](mailto:dyrcol-jspur.od@nic.in)





OFFICE OF THE JAGATSINGHPUR MUNICIPALITY, JAGATSINGHPUR

No. 4634<sup>(22)</sup>

Date 12-09-2022

To

The President,

All Puja Committee

Jagatsinghpur Municipality, Jagatsinghpur

Sub- To use idols made up of natural clay and coloured with Eco-Friendly natural dyes/colours.

Ref:- 12969/Rev.Dt.06.09.2022,Letter No. 15235 dt. 24.08.2022

Sir,


I am directed to intimate you that instruction / guideline for effective implementation of the "Odisha Prevention and Control of Water Pollution"(Procedure for immersion of idols after Pujas) Rules-2021 to use idols made up of natural clay and coloured with eco-friendly natural dyes/colours of idols in temporary immersion ponds at your end and to make smooth & peaceful observation Durga Puja-2022 celebrated within Jagatsinghpur Municipality, Jagatsinghpur

Enclosure

Copy of the letters

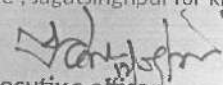
Memo No 4625 Dt. 12-09-2022

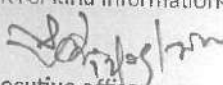
Copy Submitted to The Dept. Collector, Revenue, Collectorate, Jagatsinghpur for kind information.

  
Executive officer  
Jagatsinghpur Municipality

Memo No 4636 Dt. 12-09-2022

Copy Submitted to The Member Secretary, SPCB, Odisha BBSR for kind information.

  
Executive officer  
Jagatsinghpur Municipality

  
Executive officer  
Jagatsinghpur Municipality



XXXX-IT SBAC 59/2022 155

**Bhubaneswar Municipal Corporation**

Phone : 0674-2431253  
Fax : 0674-2432895  
E\_mail : bmcbsr@bsnl.in

Letter No. 52073 /Dated 05/11/2022

To,  
Shri Sohan Giri,  
Regional Officer,  
State Pollution Control Board,  
Regional office, Chandaka Ind.Estate  
Odisha, Bhubaneswar-751024

Sub: Information regarding Idol immersion in 2022.

Ref: Letter No - 19940 (5) dtd. 28.10.2022

Sir,

With reference to the subject cited above, I am directed to say that in Year 2022 Ganesh puja, Durga puja & Kali puja idols have been immersed in the temporary designated ponds constructed by BMC under Kuakhai bridge, & at Basuaghai under Daya bridge.

During Durga puja 122 no. of idols have been immersed in the temporary designated ponds. All the activities were carried out as per the guidelines of Central pollution control board (CPCB) & State Pollution Control Board (SPCB). After the idols immersion the water has already been treated in the pond by Lime / Bleaching powder & the remaining part of the idols i.e., wood, bamboo and straw have been disposed off at the BMC Dumping yard.

Yours faithfully,

Dy. Commissioner (Sanitation)  
Bhubaneswar Municipal Corporation

Memo no. 52074 /BMC, Dated 05/11/2022  
Copy submitted to Member Secretary, OSPCB, Bhubaneswar for kind information.

Dy. Commissioner (Sanitation)  
Bhubaneswar Municipal Corporation

Memo no. 52075 /BMC, Dated 05/11/2022  
Copy Submitted to PA to Commissioner, BMC / CA to Additional Commissioner-III, BMC for kind information of Commissioner & Additional Commissioner - III, BMC

Dy. Commissioner (Sanitation)  
Bhubaneswar Municipal Corporation



**OFFICE OF THE NOTIFIED AREA COUNCIL,  
PIPLI, DIST-PURI**

Ph.: 06758-14420  
E-mail ID: piplinac@gmail.com



No. 1322 / Date 17.10.2022

To

The Member Secretary,  
State Pollution Control Board, Odisha  
Department of Forest, Environment &  
Climate Change, Government of Odisha,  
Paribesh Bhawan, A/118,  
Nilakanthanagar, Unit-VIII  
Bhubaneswar-751012

Sub: - Submission of information in connection with Idol immersion report on this Year Durga Puja in respect of Pipli NAC.

Ref: - State Pollution Control Board, Odisha, Bhubaneswar Letter No.15235/  
Dated.24.08.2022

Sir,

In inviting a kind reference to the letter on the captioned subject cited above, I am submitting herewith the required information in connection with Idol immersion report on during this Year Durga Puja that, the Idol Immersion has been conducted with 2 Idols they have been immersed in the Temporary Pond at Jayapur Killa as per the direction of Hon'ble High Court of Odisha & guidelines of State Pollution Control Board in respect of Pipli NAC.

This is for favour of kind information and necessary action.

Yours faithfully

Executive Officer

Notified Area Council, Pipli

Executive Officer  
Pipli NAC



**Annexure-18**



email: nackonark@gmail.com  
Phone No:- 06758-236826

**OFFICE OF THE NOTIFIED AREA COUNCIL, KONARK**

No 507

Dt 2/3/2022

To.

The Regional Officer  
State Pollution Control Board ,Odisha

Sub:- Idol Immersion of Konark NAC area during Last Durga Puja 2021

Sir,

With reference to the subject cited above , I am to inform you that during last year Durga Puja 2021 idols immersion of Konark NAC area have been done in the earmarked pond for the purpose following guidelines of SPCB , Odisha .

This is submitted for favour of information and necessary action.

Yours faithfully

  
Executive Officer  
Konark N.A.C

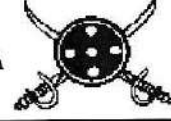


**Annexure-19**

e-Mail - khurda\_municipality@yahoo.co.in  
Phone No-06755-220674



ଘୌର ପରିଷଦ କାର୍ଯ୍ୟାଳୟ, ଖୋର୍ଦ୍ଧା  
OFFICE OF THE MUNICIPAL COUNCIL: KHORDHA  
H & UD Department, Govt. of Odisha  
Khordha-752055



No. 34/32/

Date: 11/11/22

To

The Regional Officer,  
SPC Baord, Patia, Bhubaneswar.

Sub:- Information regarding immersion of idols for the year 2022.

Sir,

With reference to the subject cited above, I am to inform you that 196 Nos. of idols were immersed in the temporary pond situated at TLC Khani Pokhari in Ward No. 12 under Khordha Municipality. All the guidelines have been implemented as per the norm given by CPCD, New Delhi and State Control Board for immersion of the idols.

This is for your information and necessary action.

Yours faithfully,

*[Signature]*  
Executive Officer  
Khordha Municipality



**Annexure-20**

**OFFICE OF THE PURI MUNICIPALITY, PURI**

Letter No. 1392

Dt. 05.11.22

To

The Regional Officer  
SPCB, Bhubaneswar  
Email- [rospcb.bhubaneswar@ospceboard.org](mailto:rospcb.bhubaneswar@ospceboard.org)

Sub- Submission of information regarding idol immersion during Durga Puja-2022 in respect of Puri Municipality

Sir,

In inviting kind reference to the subject cited above, I am to writing to inform you that a total of 58 nos of idols of Maa Durga were immersed in the temporary immersion pond provisioned by Puri Municipality at Mangalaghat, Puri during Durga Puja -2022.

This is for favour of your kind information and necessary action.

Yours faithfully,

  
Executive Officer  
Puri Municipality



OFFICE OF THE MUNICIPAL COUNCIL: BRAJRAJNAGAR

No. 8136 /

Dt. 18.11.22

To,

The Member Secretary,  
State Pollution Control Board,  
Department of Forest, Environment & Climate Change,  
Govt. of Odisha, Paribesh Bhawan,  
A/118, Nilakantha Nagar, Unit-VIII,  
Bhubaneswar-751 012,

**Sub: Effective implementation of the "Odisha Prevention and Control of Water Pollution (Procedure for immersion of Idol after Pujas) Rules, 2021."**

Ref:- Letter No.19938(14)/Dt.28.10.2022.

Sir,

With reference to the subject cited above, this is to mention here that, Idol immersion tank has been done separately near IB River at Brajrajnagar Municipality and awareness meeting has also organised for the purpose. The photocopy of the said temporary immersion pond and meeting has been annexed for kind reference. This may be treated as action taken report.

Encl:- Photo copy 4Nos.

Yours Faithfully

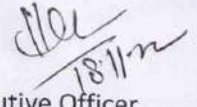
  
18.11.22  
Executive Officer

~~Brajrajnagar Municipality~~

Memo No. 8137 /

Dt. 18.11.22

Copy submitted to the Regional Officer of State Pollution Control Board, Jharsuguda, Odisha for kind information and necessary action.

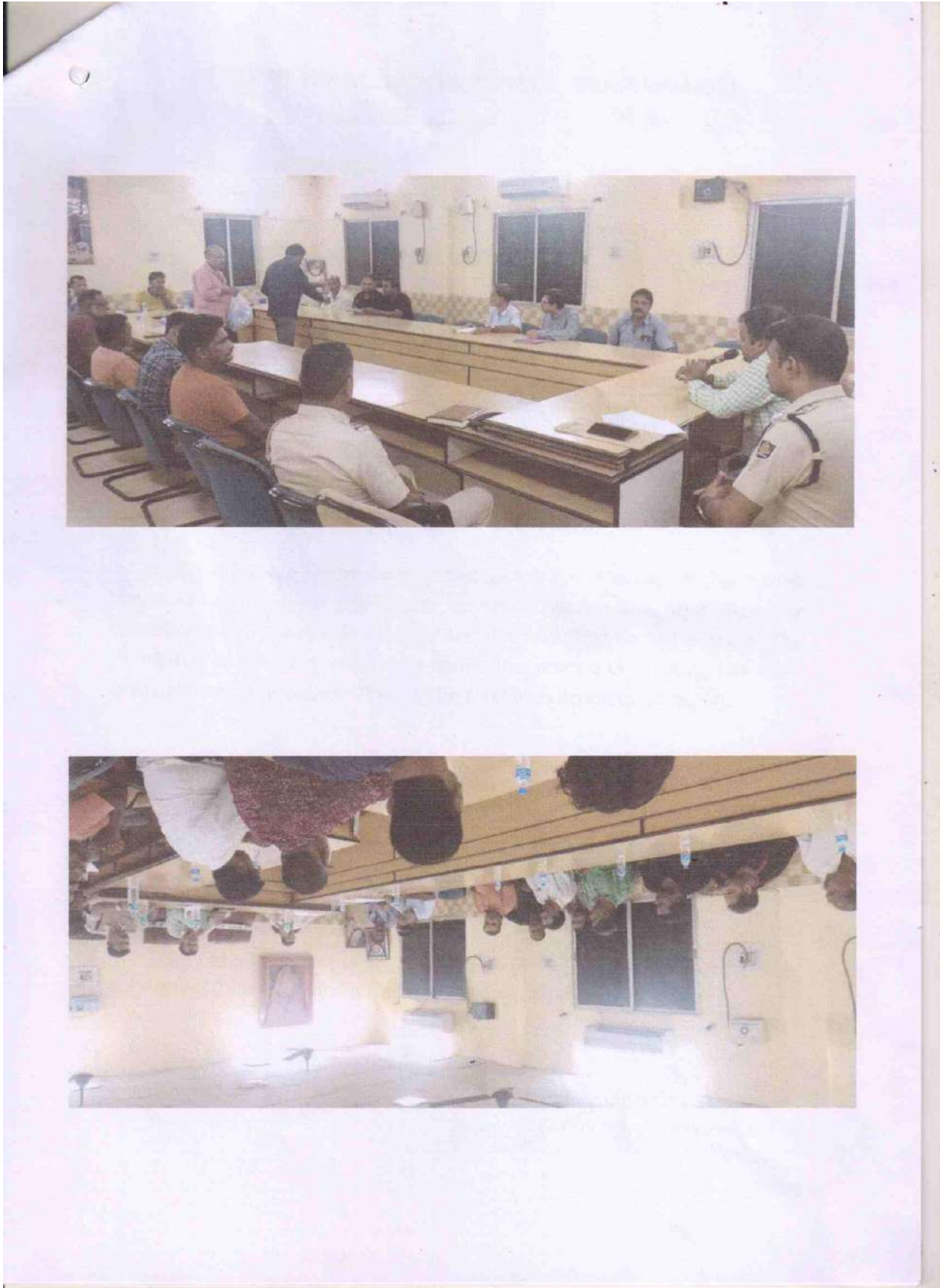
  
18.11.22  
Executive Officer

~~Brajrajnagar Municipality~~











Annexure-22

OFFICE OF THE MUNICIPAL COUNCIL, NAYAGARH

No: - 5145 Dt:- 22.11.22

To,

The Member Secretary  
State Pollution Control Board,  
Odisha, Bhubaneswar

Sub: Artificial Pond for immersion of idols and sculptures.

Ref.: Letter No.: 19941, Dt. 28.10.2022

Sir,

In inviting a kind reference to the subject cited above, it is to inform you that, as per guideline of State Pollution Control Board, Odisha this office has constructed one artificial Pond Point in Old Rajabati, Nayagarh Municipality for immersion of idols and sculpture.


This is for favour of your kind information and necessary action.

Yours faithfully

  
Executive Officer  
Nayagarh Municipality

Memo No. 5146 dt. 22.11.22

Copy Submitted to the Director Municipal Administration & Ex-Officio Additional Secretary to Govt, Housing & Urban Development Department, Odisha, Bhubaneswar for favour of kind information and necessary action.

  
Executive Officer  
Nayagarh Municipality

Memo No. 5147 dt. 22.11.22

Copy Submitted to the Collector and District Magistrate, Nayagarh / Project Director, DUDA, Nayagarh for favour of kind information and necessary action.

  
Executive Officer  
Nayagarh Municipality